

**U.S. PUBLIC LAND CORNER  
MAINTENANCE**

**# 102**

**Corner ID: S1/4 Sec.25, T19N-R1W  
21901250020**

<u>DATE</u>	<u>CREW</u>	<u>MONUMENT INFO</u>
July 30, 2020	Zachariah P. Dechant Gary L. Dechant	Found Harrison intact, flush, at fence corner, 11' south of south edge of east-west ditch. Sign 1' north. Holden's BT to the NE nothing left but a depression in the ground

	<u>Compass Bearing</u>	<u>Distance</u>
1) Set 2' section of steel T post, down 6"	S72E	26.12'
2) Set 2' section of T' post, down 6", 4' NW of 12" White Pine	S30E	60.80'
3) Set 2' section of T post, down 6", 3' NE of 18" White Oak (1980 BT)	S20W	41.80'
4) Set 2' section of T post, down 6", 3' NE of 8" White oak	S44W	42.84'



I, Harley A. Sime do hereby certify that on the twenty-seventh day of June 1980, I found (evidence) ~~(no evidence)~~ of the South 1/4 corner of Section 25, T 19 N, R 1 W Fourth Principal Meridian, and I re-established said corner according to the Wisconsin Statutes as shown and described hereon.

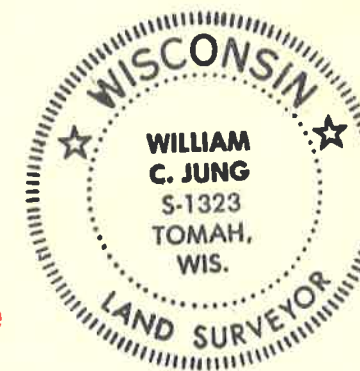
Dated this 26th day of Feb. 1981.

Harley A. Sime - R.L.S. 355  
 County Surveyor-Monroe County, Wisconsin.  
Title

**History of corner establishment since Original Government Survey**  
 Fred Holden was at this corner in June of 1901.

Description of corner evidence found:

The corner was reestablished by using Holden's old bearing tree. Set a Harrison marker.



**See Reverse Side For Maintenance**

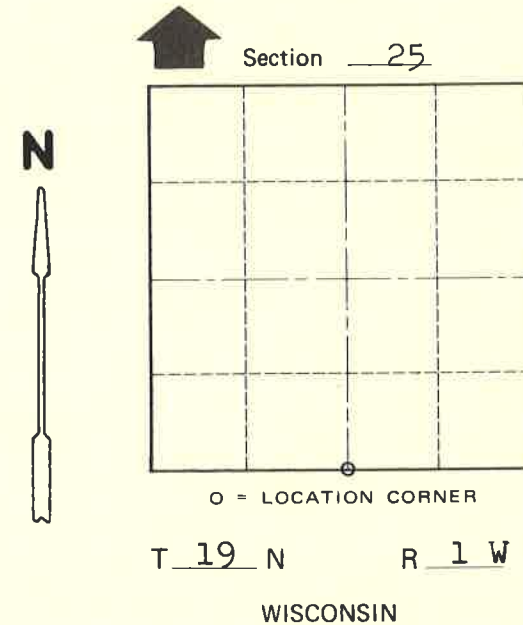
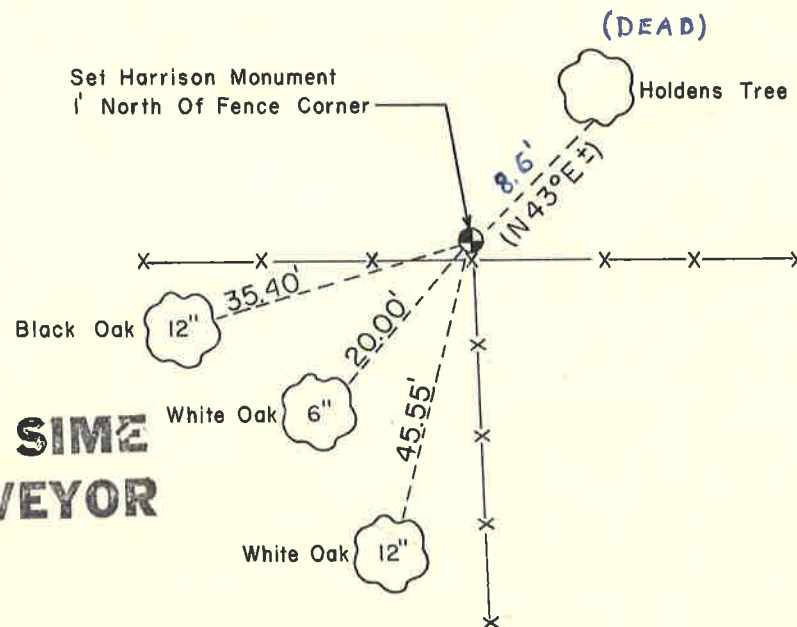
Description of corner and witness monuments, references and accessories used to perpetuate the original or re-established location of this corner:

Witnesses to corner location:

Gary Dechant

Chuck Dade

William C. Jung  
 William C. Jung, R.L.S. 1323



**Approved: HARLEY A. SIME  
 MONROE CO. SURVEYOR**

SURVEY CONTROL ORDER

Horizontal \_\_\_\_\_  
 Vertical \_\_\_\_\_

WISCONSIN COORDINATE SYSTEM

Corner	East (X)	North (Y)	Elevation (Z)	Zone
Control Sta. Name				

Town of Lincoln  
 County of Monroe  
Wisconsin

COUNTY SURVEYOR FORM NO. 1