

**U.S. PUBLIC LAND CORNER
MAINTENANCE**

80

**Corner ID: E1/4 Sec.24, T19N-R1W
21901242000**

<u>DATE</u>	<u>CREW</u>	<u>MONUMENT INFO</u>
July 31, 2020	Zachariah P. Dechant Gary L. Dechant	Found Harrison intact, down 20", inside of 8" plastic pipe south side of bank, 20' east of roadway, sign 1' north.
		<u>Compass Bearing</u> <u>Distance</u>
1) Set 2' section of steel T post, down 6", top of bank		N67E 24.77'
2) Set 2' section of T' post, down 6", 4' NW of 10" Black Oak		S53E 43.00'
3) Set 2' section of T post, down 6", 5' NE of double 20" Black Oak		S60W 58.60'
4) Set 2' section of T post, down 6", center of roadway		S80W 21.47'

Gary L. Dechant
WISCONSIN
★ GARY L. DECHANT ★
S-1744
DOUGLAS, WI
LAND SURVEYOR
August 4, 2020

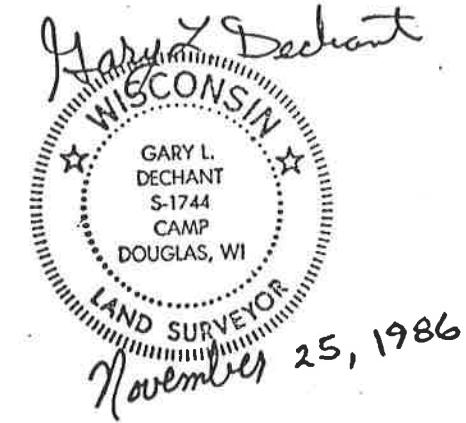
CERTIFICATE

UPDATED
CERTIFIED LAND CORNER

No. 80

I, Gary L. Dechant, do hereby certify that on the 8th day of November 1986, I found ~~(evidence)~~ (no evidence) of the E/4 corner of Section 24, T 19 N, R 1 W Fourth Principal Meridian, and I re-established said corner according to the Wisconsin Statutes as shown and described hereon.

History of corner establishment since Original Government Survey
Fred Holden was here in January of 1902.



Dated this 25th day of Nov. 1986.
Gary L. Dechant
Registered Land Surveyor, S-1744
Title

Description of corner evidence found:
Set corner at equal distances and on line between Section corners.

See Reverse Side
For Maintenance

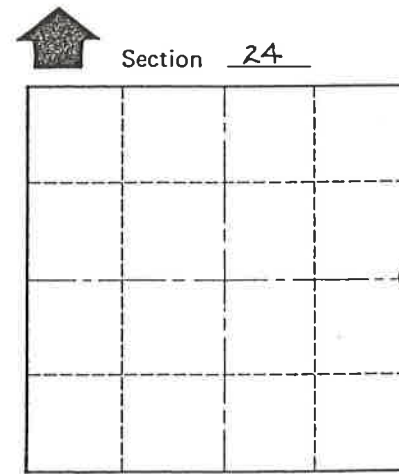
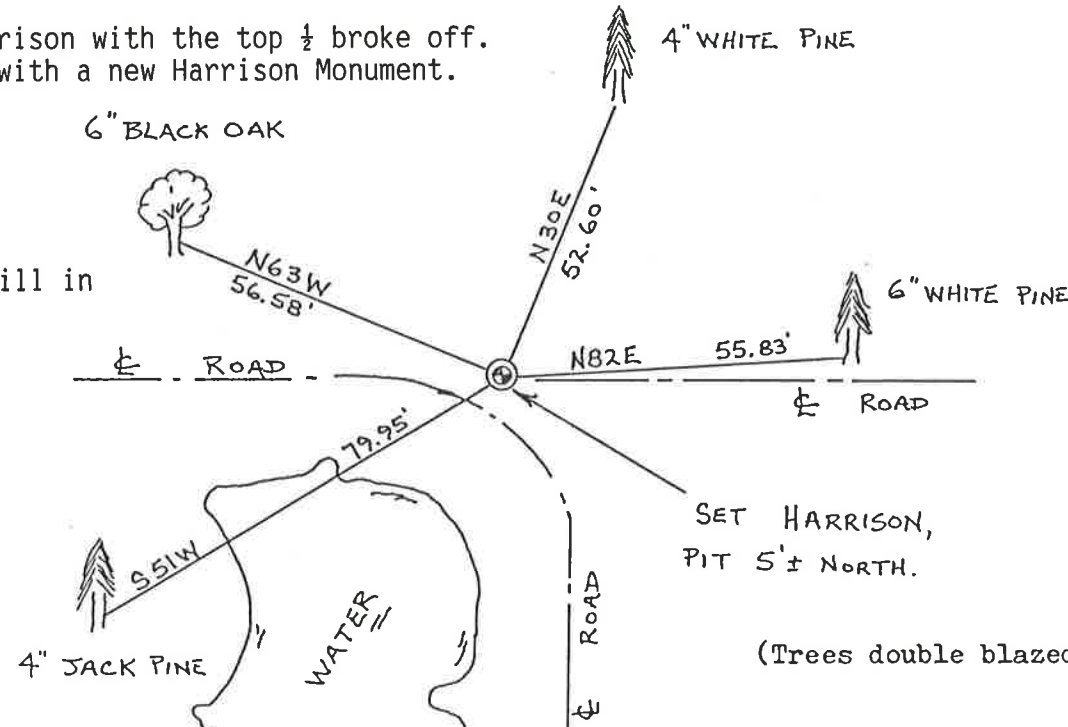
COUNTY SURVEYOR FORM NO. 1

Description of corner and witness monuments, references and accessories used to perpetuate the original or re-established location of this corner:

Note: I found the original Harrison with the top 1/2 broke off. I replaced this portion with a new Harrison Monument.

Witnesses to corner location: Crew: Bryan H. Meyer, R.L.S.
Brian Forsythe
Gary L. Dechant Date: May 18th, 1989

All ties are still in place. 5-18-89



Section 24
T 19 N R 1 W
WISCONSIN
● = LOCATION CORNER

(Trees double blazed with nails set)

SURVEY CONTROL ORDER

Horizontal				
Vertical				
Corner	East (X)	North (Y)	Elevation (Z)	Zone
Control Sta. Name				

City, Village or Town LINCOLN
County of MONROE

CERTIFICATE

I, Gary L. Dechant, do hereby certify that on the 8th day of November 19 86, I found ~~evidence~~ (no evidence) of the E4 corner of Section 24, T 19 N, R 1 W Fourth Principal Meridian, and I re-established said corner according to the Wisconsin Statutes as shown and described hereon.

Dated this 25th day of Nov. 19 86.

Gary L. Dechant
Registered Land Surveyor, S-1744
Title

CERTIFIED LAND CORNER

No. 80

History of corner establishment since Original Government Survey

Fred Holden was here in January of 1902.

Description of corner evidence found:

Set corner at equal distances and on line between Section corners.

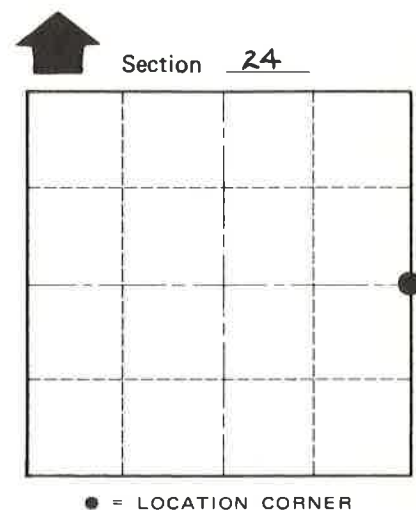
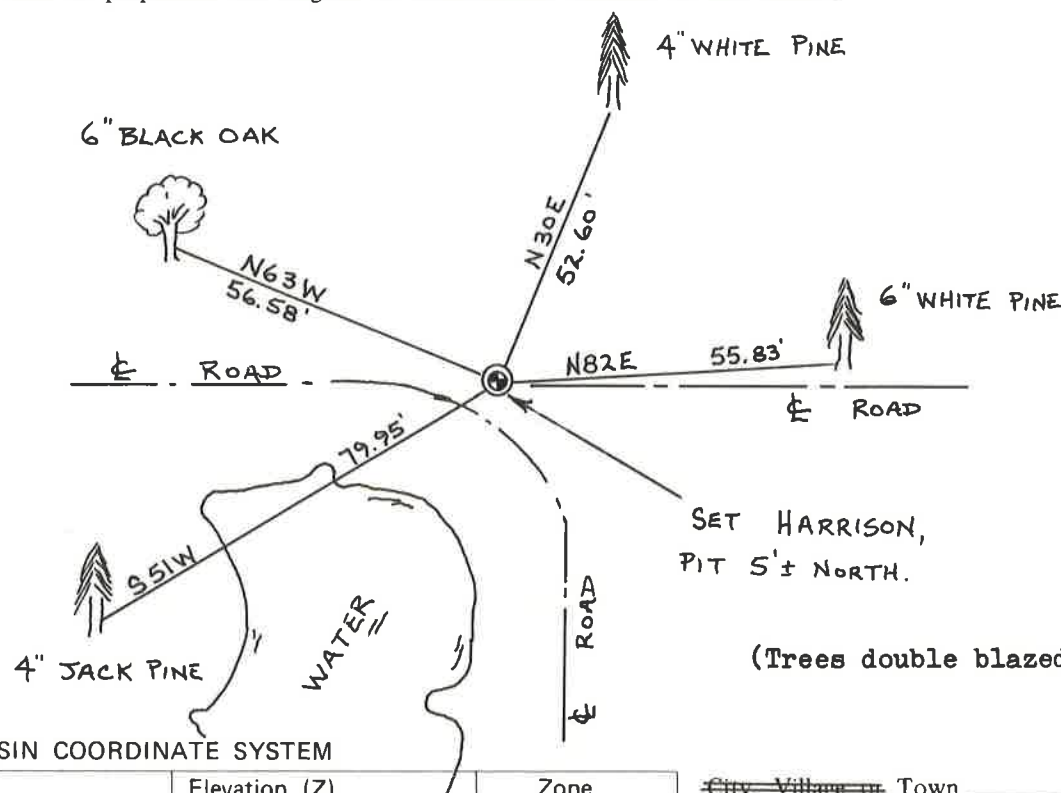


See Reverse Side For Maintenance

Description of corner and witness monuments, references and accessories used to perpetuate the original or re-established location of this corner:

Witnesses to corner location:

Gary L. Dechant



T 19 N R 1 W
WISCONSIN

(Trees double blazed with nails set)

SURVEY CONTROL ORDER

Horizontal				
Vertical				
Corner	East (X)	North (Y)	Elevation (Z)	Zone
Control Sta. Name				

City, Village or Town LINCOLN

County of MONROE

COUNTY SURVEYOR FORM NO. 1