

U.S. LAND CORNER MAINTENANCE

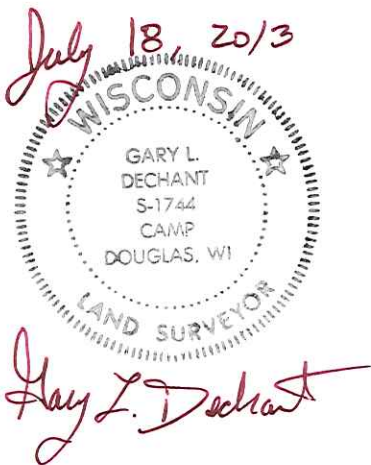
Corner ID : S1/4 Sec.24 , T19N-R1W
21901240020

<u>DATE</u>	<u>CREW</u>	<u>MONUMENT TYPE</u> -----
Sept. 3, 2011	Zachariah P.Dechant Gary L. Dechant	Harrison destroyed during road work Reset with railroad spikeas previously, between section corners 7' south centerline CTH "N"

References:

	<u>Bearing</u>	<u>Distance</u>
Set 3/4" rebar down 6"	N57E	87.22'
Set 3/4" rebar	S57W	60.52'
Set 3/4" Railroad spike south shoulder road	S57W	14.06'
Set survey sign on 5" maple	South	31'

NOTE: Rebars and railroad spike all set on straight line with S1/4 corner.



21901240020

I, Harley A. Sime, do hereby certify that on the twenty-seventh day of June 1980, I found ~~(evidence)~~ (no evidence) of the North 1/4 corner of Section 25, T 19 N, R 1 W Fourth Principal Meridian, and I re-established said corner according to the Wisconsin Statutes as shown and described hereon.

History of corner establishment since Original Government Survey

Fred Holden was at this corner in June of 1901 and January of 1902.

Description of corner evidence found:

Set the corner equidistant and on line between the section corners. This fits the old occupation lines North and South. Set a 1/4"x30" iron bar.

Dated this 26th day of Feb. 1981.

Harley A. Sime - R.L.S. 355

County Surveyor-Monroe County, Wisconsin.
Title

**Approved: HARLEY A. SIME
MONROE CO. SURVEYOR**

COUNTY SURVEYOR FORM NO. 1

Description of corner and witness monuments, references and accessories used to perpetuate the original or re-established location of this corner:

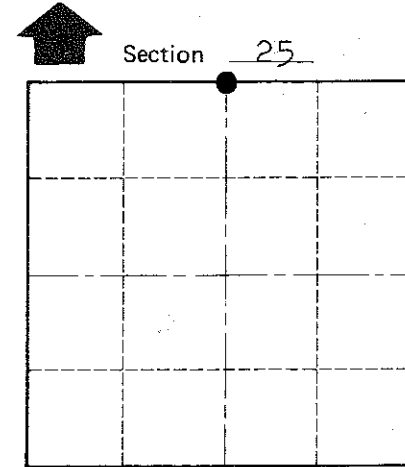
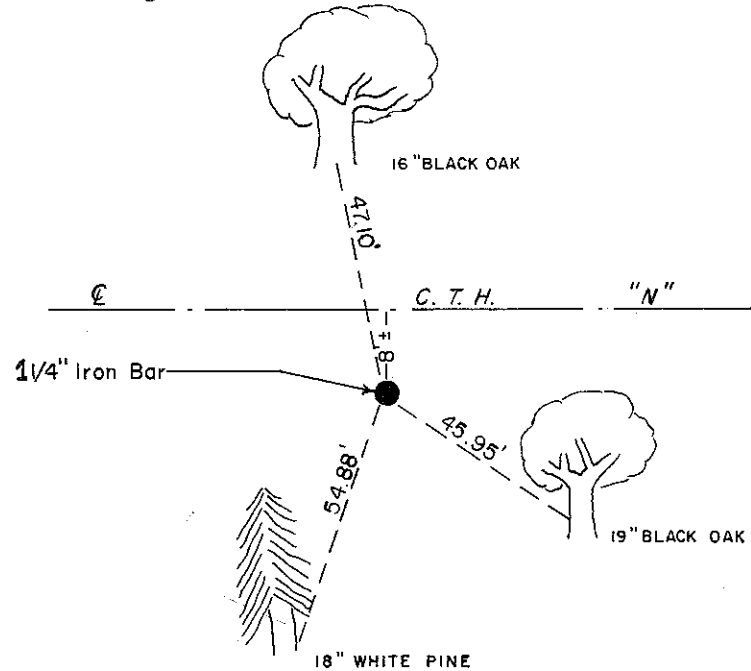
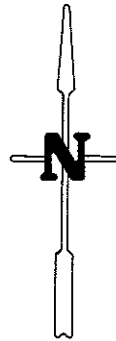
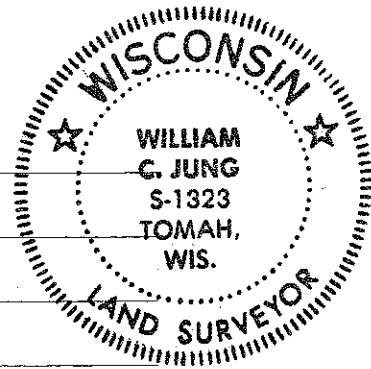
Witnesses to corner location:

Gary Dechant

Charles Dade

William C. Jung

William C. Jung, R.L.S. 1323



● = LOCATION CORNER

T 19 N R 1 W

WISCONSIN

NOTE:
All Trees Double Blazed
With Nails & Caps Set

SURVEY CONTROL ORDER

Horizontal	_____
Vertical	_____

WISCONSIN COORDINATE SYSTEM

Corner	East (X)	North (Y)	Elevation (Z)	Zone
Control Sta. Name				

~~City, Village or~~ Town of Lincoln
County of Monroe
Wisconsin