

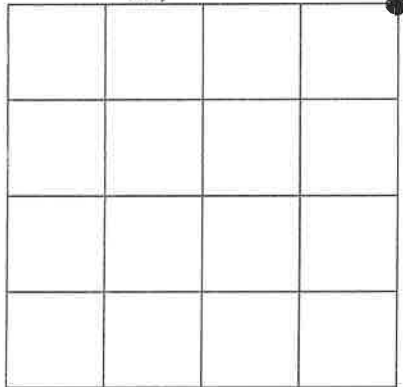
# U.S. Public Land Survey Monument Record

Corner ID: NE Sec. 25, T19N-R1W

21901240000

**Type of Monument:** Reset destroyed corner with 1"x24" round iron bar

Sec. 25, T19N-R1W



**Field Date:** June 1, 2018

I do hereby certify that I have complied with AE 7 of the Wisconsin Administrative Code to the best of my knowledge and belief.

**Witnesses:** Zachariah P. Dechant  
Gary L. Dechant

*Gary L. Dechant* June 4, 2018

**Basis For Monument Location:**

(Show info such as history, evidence, testimony, found or method of relocation)

Joshua Hathaway, Deputy Surveyor, performed the original government survey in May of 1839.

Fred Holden shows an iron thimble at this corner in June of 1901 and 1902.

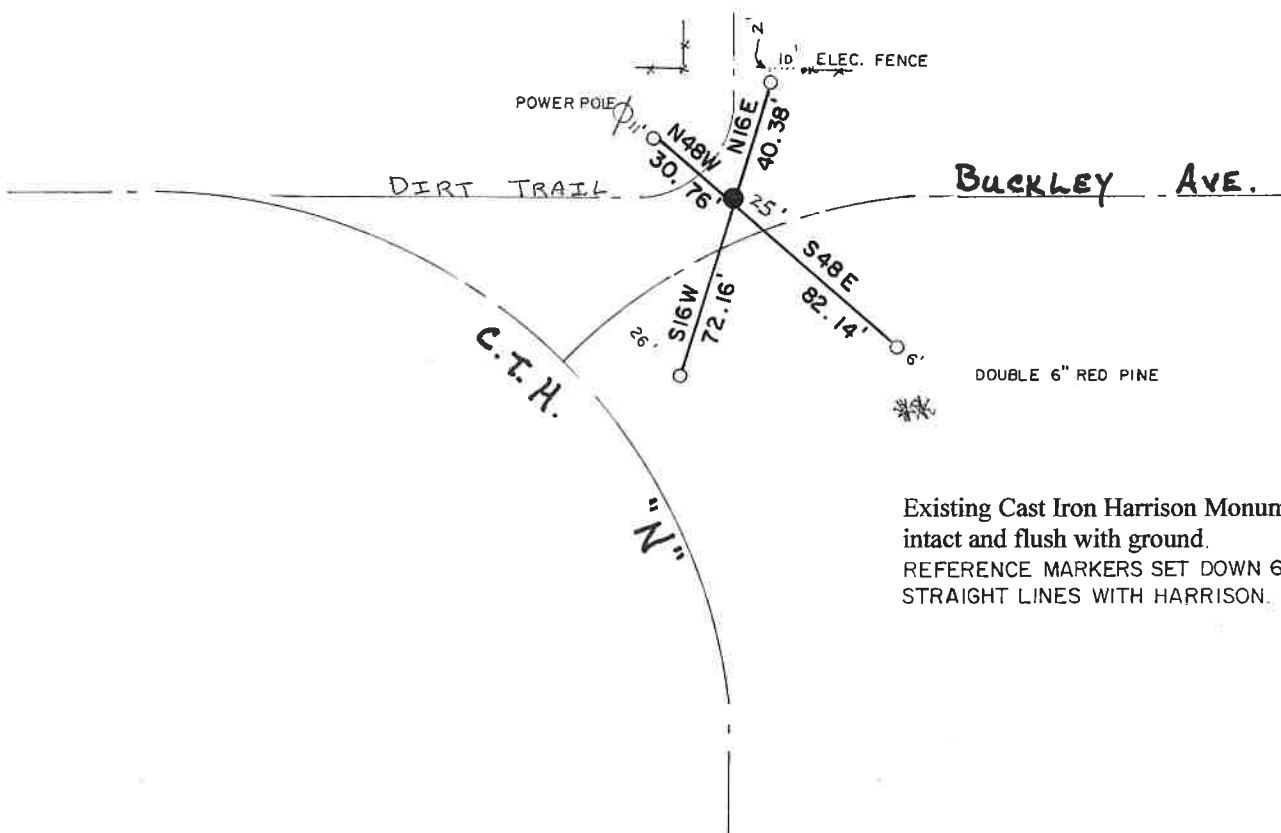
Kennedy was at this corner in the late 1930's.

In February of 1981, a Harley A. Sime crew found no evidence of the previous monument. Set a 3/4" round iron bar at the corner 2640' north of the E1/4 corner on line with the E1/4 and SE corners. William Jung at a later date replaced the iron bar with a Harrison Monument.

Found Harrison Monument intact. CTH "N" and Buckley Avenue intersection has been changed since 1981.

○ =Set 1" x 24" round iron bar

BOGS & RESERVOIRS



I, Harley A Sime do hereby certify that on the twenty-seventh day of June 1980, I found (no evidence) of the Northeast corner of Section 25, T 19 N, R 1 W Fourth Principal Meridian, and I re-established said corner according to the Wisconsin Statutes as shown and described hereon.

Dated this 26th day of Feb. 1981.

Harley A. Sime - R.L.S. 355  
County Surveyor-Monroe County, Wisconsin.  
Title

**History of corner establishment since Original Government Survey**

Fred Holden shows an iron thimble at this corner in his notes of June, 1901, and January, 1902. Kennedy was at this corner in the late 1930's.

Description of corner evidence found:

Set the corner 2640 feet North of the E1/4 corner and on line with the E1/4 and SE corners. This location fits very well the evidence I found and measurements I made in all four cardinal directions. The existing iron bar that was replaced was a survey point set by Jung. The thimble could not be found.

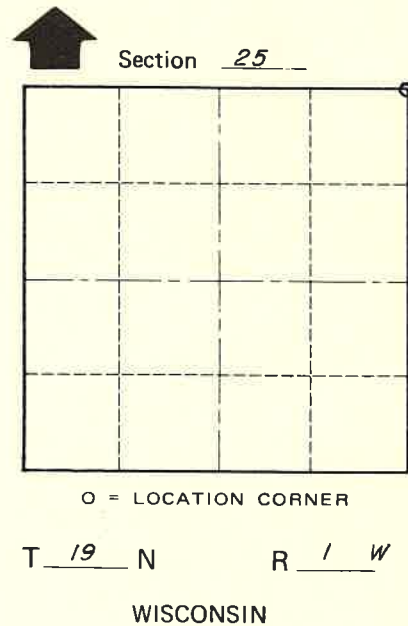
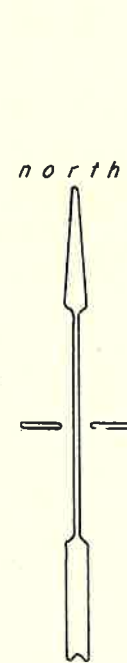
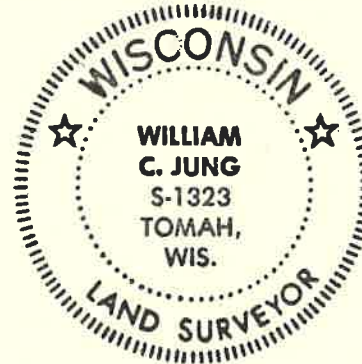
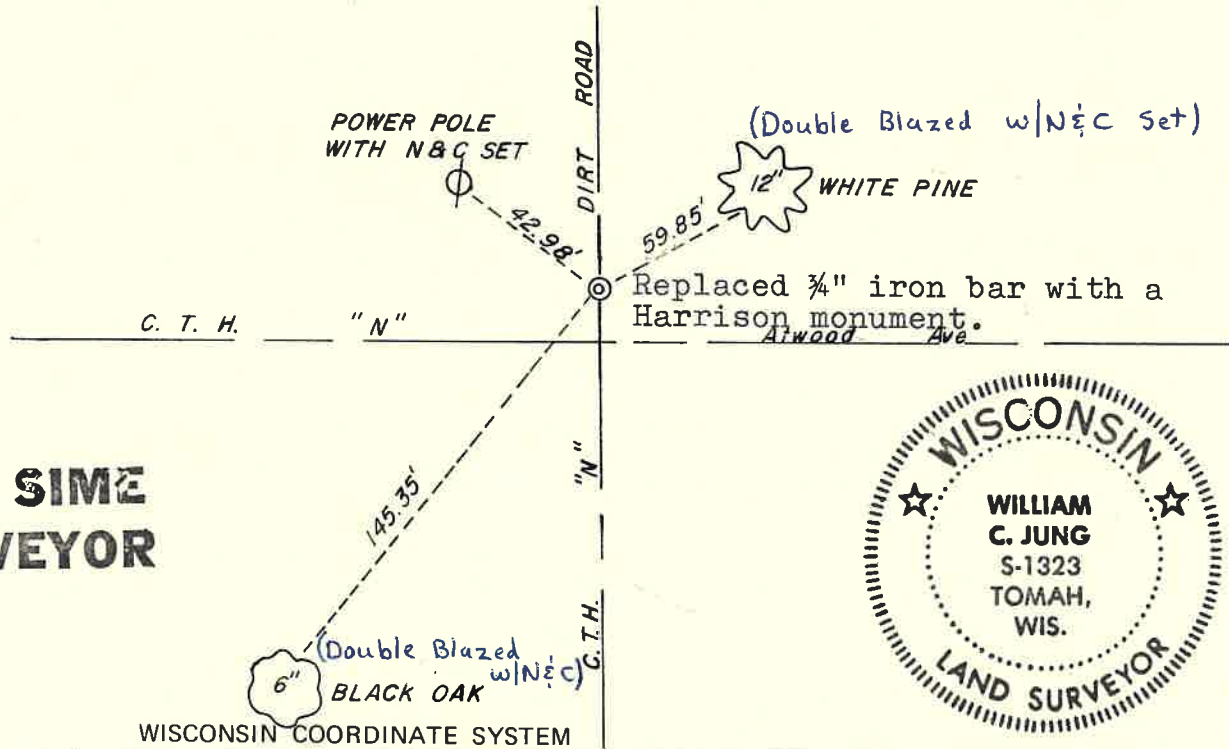
Description of corner and witness monuments, references and accessories used to perpetuate the original or re-established location of this corner:

Witnesses to corner location:

Gary Dechant

Chuck Dade

William C. Jung  
William C. Jung, R.L.S. 1323



**Approved: HARLEY A. SIME  
MONROE CO. SURVEYOR**

SURVEY CONTROL ORDER

Horizontal	_____
Vertical	_____

Corner	East (X)	North (Y)	Elevation (Z)	Zone
Control Sta. Name				

~~City, Village or~~ Town of Lincoln  
County of Monroe  
Wisconsin

COUNTY SURVEYOR FORM NO. 1