

CERTIFICATE

CERTIFIED LAND CORNER

No. 78B

21901232020

I, William C. Jung, do hereby certify that on the 26th day of May 1978, I found ~~(evidence)~~ (no evidence) of the C/4 corner of Section 23, T19 N, R 1 W Fourth Principal Meridian, and I re-established said corner according to the Wisconsin Statutes as shown and described hereon.

History of original corner establishment:

Holden set an iron pipe at this corner in January of 1902.

Description of corner evidence found:

Set the corner at the intersection of the 1/4 lines. Found a pail buried 12'+ to the north. Could not find Holden's iron pipe.

Dated this 12th day of Dec. 1978.

William C. Jung, R.L.S. 1323

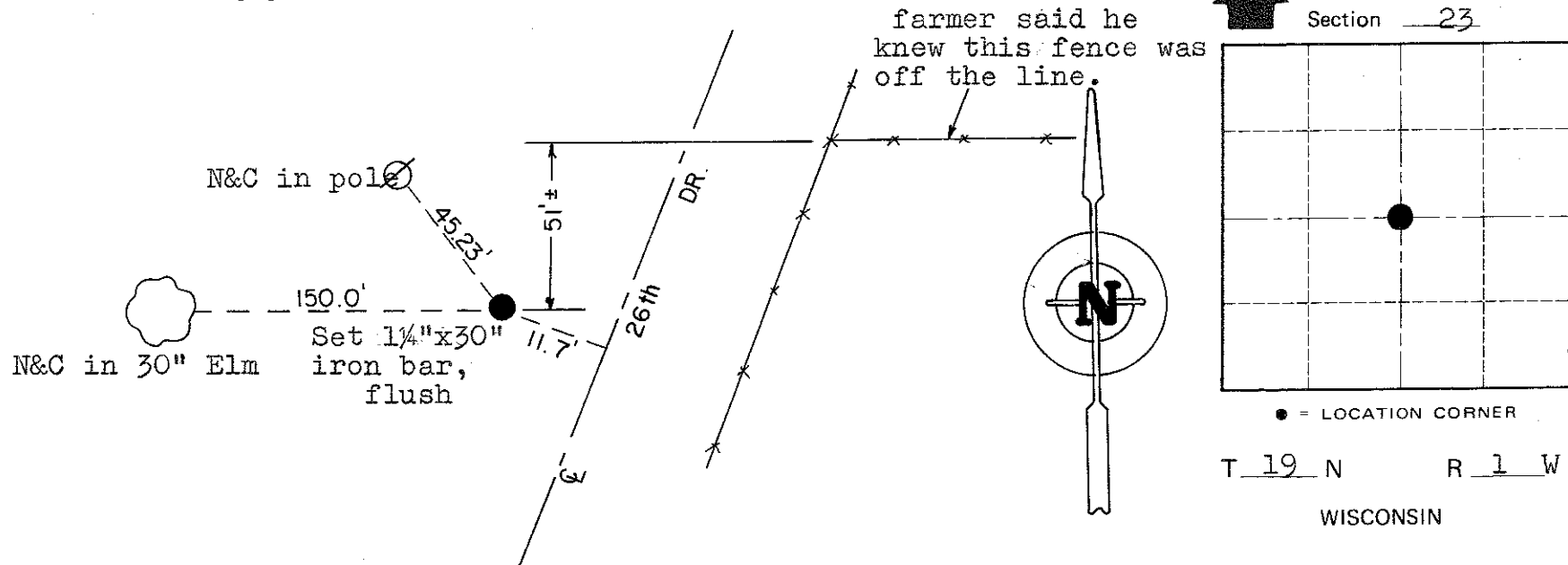
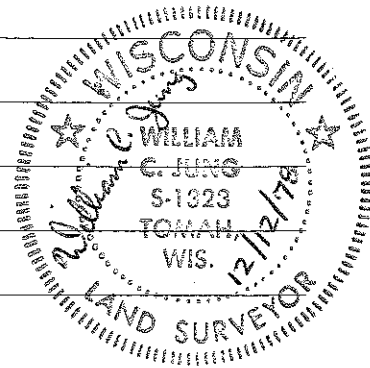
Crew Chief, County Surveyor's
Title Office

COUNTY SURVEYOR FORM NO. 1

Description of corner and witness monuments, references and accessories used to perpetuate the original or re-established location of this corner:

Witnesses to corner location:

W. Jung
G. Dechant



SURVEY CONTROL ORDER

Horizontal _____
Vertical _____

Approved by: Harley A. Sime
County Surveyor

WISCONSIN COORDINATE SYSTEM

Corner	East (X)	North (Y)	Elevation (Z)	Zone
Control Sta. Name				

City, Village or Town Lincoln
County of Monroe