

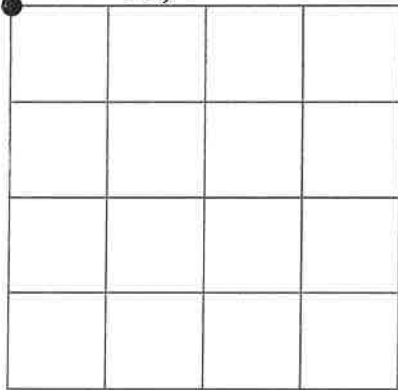
# U.S. Public Land Survey Monument Record

Corner ID: NW Sec. 26, T19N-R1W

21901220000

Type of Monument: Reset destroyed corner with 1"x24" round iron bar

Sec. 26, T19N-R1W



Field Date: June 1, 2018

Witnesses: Zachariah P. Dechant  
Gary L. Dechant

I do hereby certify that I have complied with AE 7 of the Wisconsin Administrative Code to the best of my knowledge and belief.

**Basis For Monument Location:**

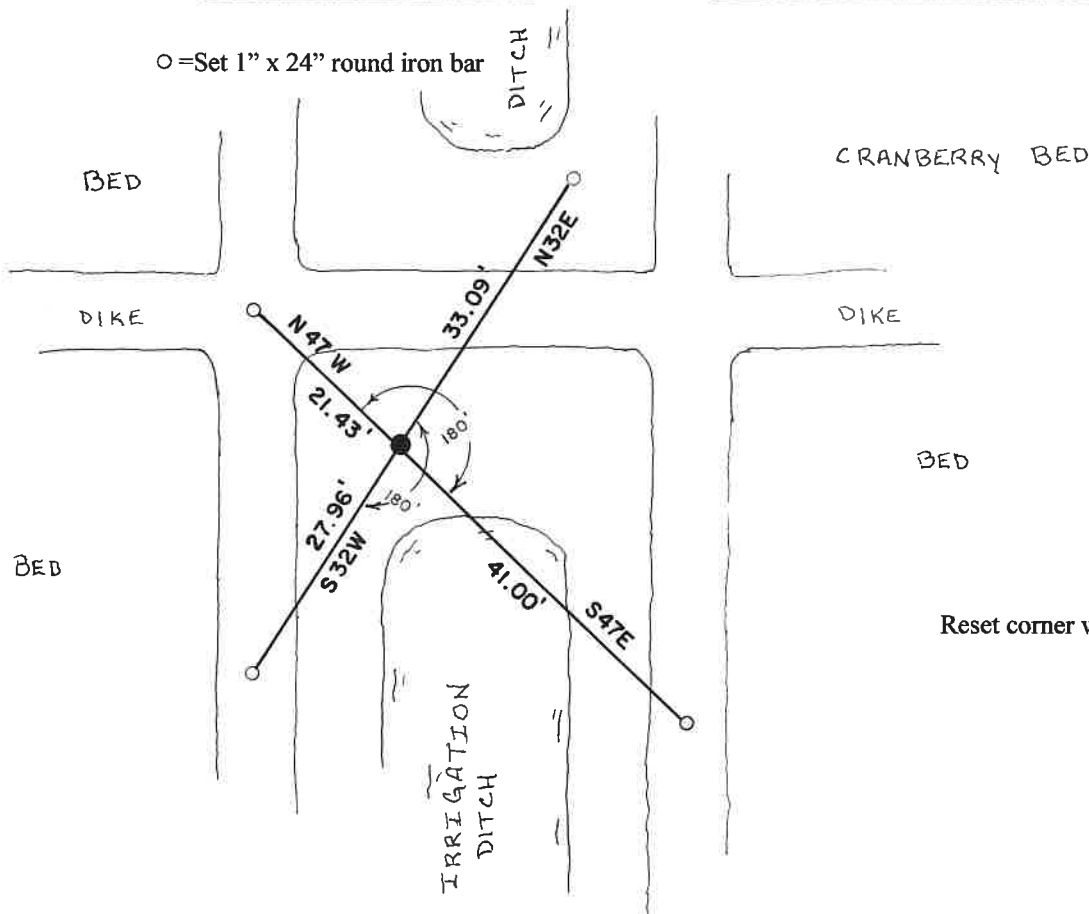
(Show info such as history, evidence, testimony, found or method of relocation)

William F. Thompkins, Deputy Surveyor, performed the original government survey in 1852-1853.

Fred Holden set an iron bar at this corner in January of 1901.

Fred Zietlow and Duane (Duke) Marten could not find Holden's iron bar and reset a 3/4" iron bar at this corner in May 1971.

Due to cranberry bog expansion the corner was completely destroyed. Rest the corner based on previous surveys performed in the area. Reset with a 1"x24" round iron bar.



Reset corner with 1"x24" round iron bar.

I, Harley A. Sime, do hereby certify that on the 26th day of May, 1971, I found (evidence) (~~no evidence~~) of the Northwest corner of Section 26, T19 N, R 1 W, Fourth Principal Meridian, and I re-established said corner according to the Wisconsin Statutes as shown and described hereon.

History of original corner establishment:

**Fred Holden set an iron bar at this corner in January of 1901.**

Description of corner evidence found:

**F. Zietlow and D. Marten set a 3/4" iron bar at this corner in May of 1971. They searched for but could not find Holden's corner. The iron bar was later removed and replaced by a Harrison marker.**

Dated this 2nd day of March, 1976.

County Surveyor

Title

**Approved: HARLEY A. SIME**

**MONROE CO. SURVEYOR**

COUNTY SURVEYOR FORM NO. 1

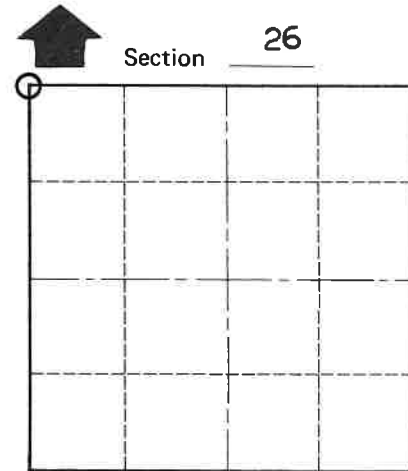
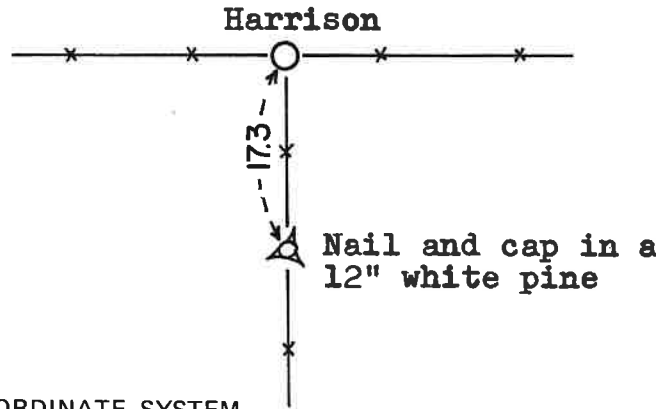
Description of corner and witness monuments, references and accessories used to perpetuate the original or re-established location of this corner:

**Set a Harrison at the fence corner, flush with the ground.**

Witnesses to corner location:

F. Zietlow

D. Marten



O = LOCATION CORNER

T 19 N R 1 W

WISCONSIN

SURVEY CONTROL ORDER

Horizontal	_____
Vertical	_____

WISCONSIN COORDINATE SYSTEM

Corner	East (X)	North (Y)	Elevation (Z)	Zone
Control Sta. Name				

City, Village or Town Lincoln

County of Monroe