

# 128

**U.S. PUBLIC LAND CORNER  
MAINTENANCE**

**Corner ID :** S1/4 Sec. 33, T19N-R1W  
**21901330020**

<u>DATE</u>	<u>CREW</u>	<u>MONUMENT TYPE -----</u>
September 1, 2015	Zachariah P. Dechant Gary L. Dechant	Existing 1/4" round iron bar bent. Reset corner with 3/4"x24" hex iron bar, down 10". Mag nails 2' north & West. Corner is 10 south of Division Road Approx 45' east of CTH "O"

References:

	<u>Bearing</u>	<u>Distance</u>
1) Existing 3/4" iron bar 2' east of r/w post	N70E	131.21' (131.21)
2) Existing 3/4" round iron bar 2' west of r/w post	S80E	124.91' (125.00)
3) Existing 3/4" round iron bar 2' south of r/w post	S8E	128.08' (128.11)'
4) Existing 3/4" round iron bar 2' south of r/w post	N7E	164.50' (164.24)'

*Gary L. Dechant*  
  
*October 29, 2015*

I, Garold A. Sime, do hereby certify that on the tenth day of May 19 88, I found ~~(evidence)~~ (no evidence) of the South 1/4 corner of Section 33, T 19 N, R 1 W Fourth Principal Meridian, and I re-established said corner according to the Wisconsin Statutes as shown and described hereon.

Dated this 23rd day of May 19 88.

Garold A. Sime

Garold A. Sime, Registered Land Surveyor

**History of corner establishment since Original Government Survey**

F. Zietlow and D. Marten set a Harrison marker at this corner on Oct. 27, 1971. K. Pritzlaff found this corner in 1974. Bill Jung referenced this corner as stated on previous tie sheet dated March 3rd, 1976. This Harrison Monument was removed prior to C.T.H. "O" construction in the fall of 1985.

**Description of corner evidence found:**

This corner was re-established using previous survey monumentation to the west and east of the corner location.

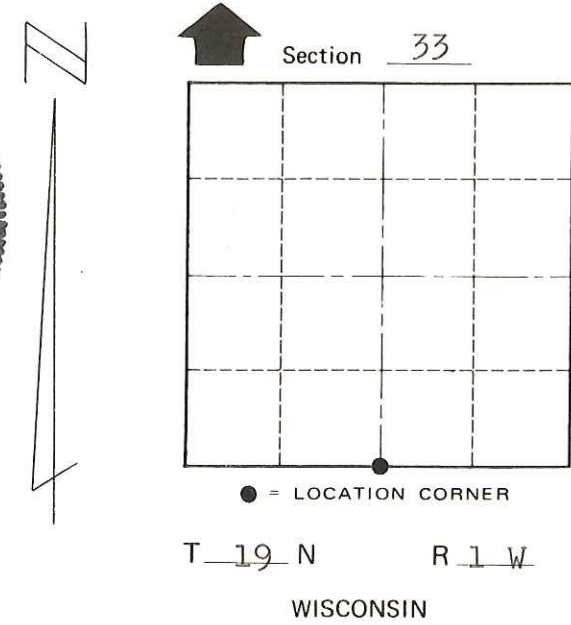
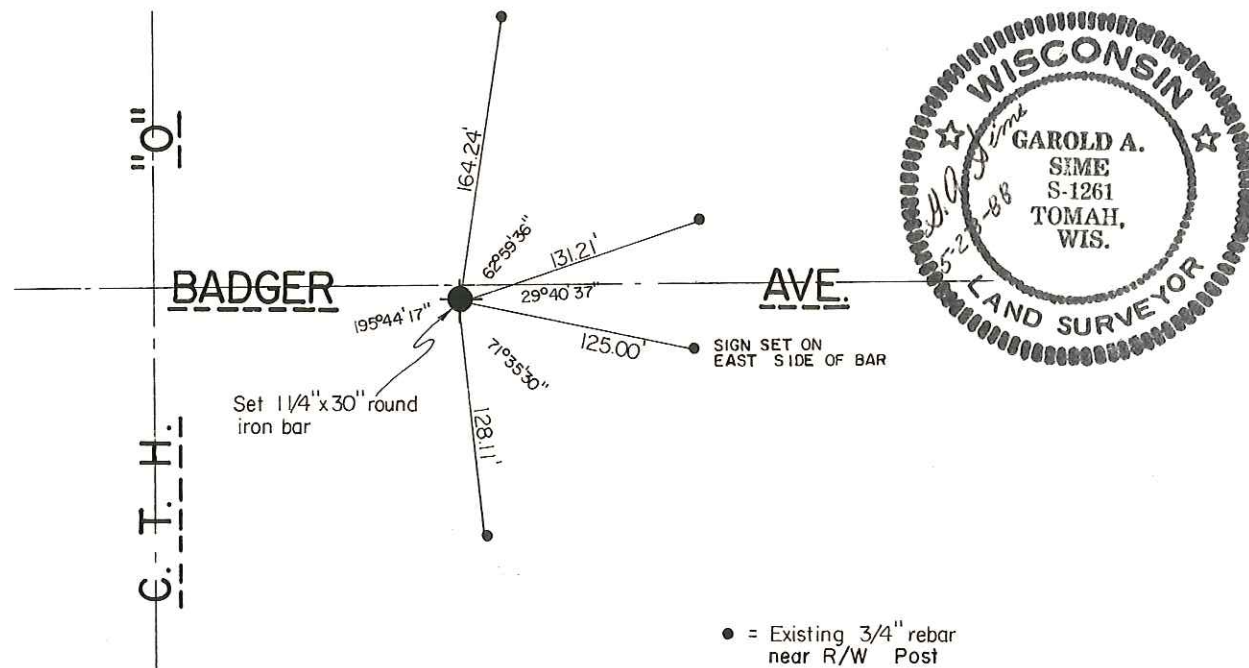
**See Reverse Side For Maintenance**

Description of corner and witness monuments, references and accessories used to perpetuate the original or re-established location of this corner:

Witnesses to corner location:

Bryan Meyer

Dallas Wilhite



COUNTY SURVEYOR FORM NO. 1

**SURVEY CONTROL ORDER**

Horizontal	_____
Vertical	_____

**WISCONSIN COORDINATE SYSTEM**

Corner	East (X)	North (Y)	Elevation (Z)	Zone
Control Sta. Name				

~~City, Village or~~ Town of Lincoln

County of Monroe

I, Harley A. Sime, do hereby certify that on the \_\_\_\_\_ day of \_\_\_\_\_ 19 74, I found (evidence) (~~no evidence~~) of the South 1/4 corner of Section 33, T 19 N, R 1 W Fourth Principal Meridian, and I re-established said corner according to the Wisconsin Statutes as shown and described hereon.

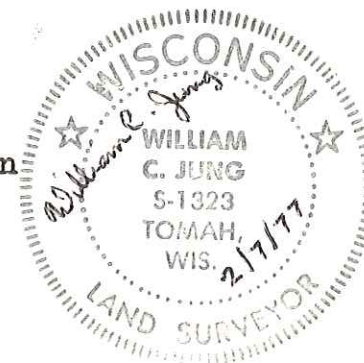
History of original corner establishment:

**See Reverse Side For Maintenance**

Description of corner evidence found:

Dated this 3rd day of March 19 76.

F. Zietlow and D. Marten set a Harrison marker at this corner on October 27, 1971. K. Pritzlaff found this corner in 1974.



County Surveyor \_\_\_\_\_  
Title

**Approved: HARLEY A. SIME  
MONROE CO. SURVEYOR**

Description of corner and witness monuments, references and accessories used to perpetuate the original or re-established location of this corner:

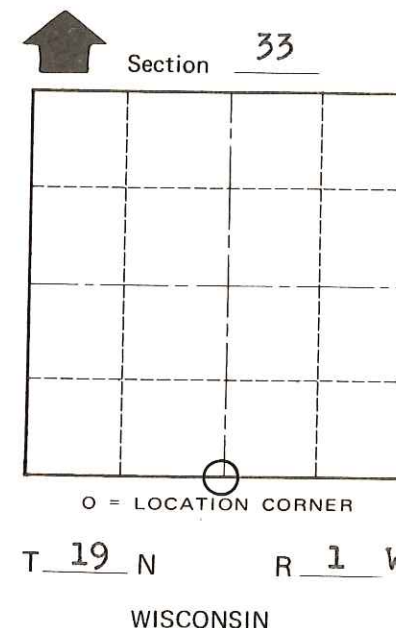
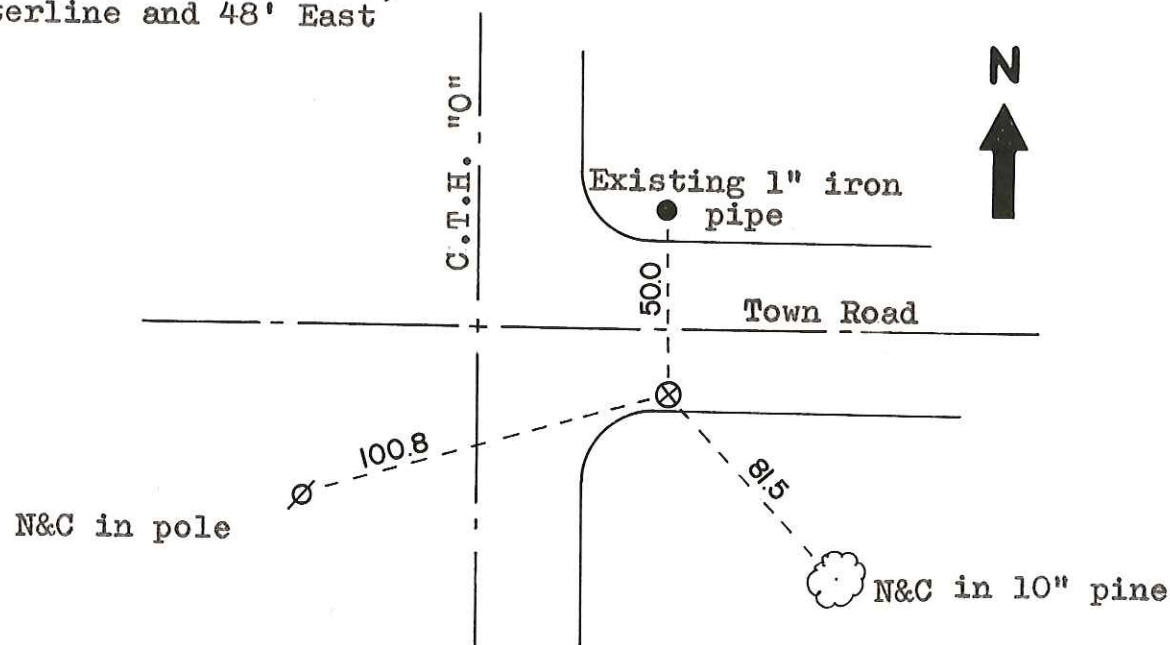
**Found a Harrison, down 4" below the gravel surface, 12' South of the Town Road centerline and 48' East of C.T.H. "O" centerline.**

Witnesses to corner location:

K. Pritzlaff-Crew Chief

A. Lueck

W.C. Jung-Witness *W.C. Jung*



SURVEY CONTROL ORDER

Horizontal	_____
Vertical	_____

WISCONSIN COORDINATE SYSTEM

Corner	East (X)	North (Y)	Elevation (Z)	Zone
Control Sta. Name				

City, Village or Town Lincoln  
County of Monroe

COUNTY SURVEYOR FORM NO. 1