

**U.S. PUBLIC LAND CORNER  
MAINTENANCE**

# 9

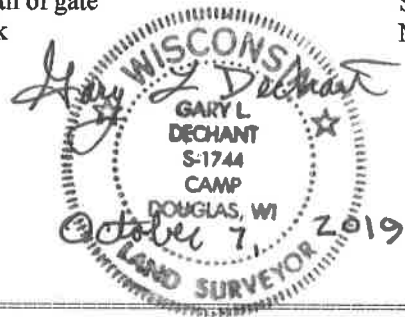
Corner ID: NW Sec. 4, T18N-R1W

21901320000

<u>DATE</u>	<u>CREW</u>	<u>MONUMENT TYPE</u>
October 7, 2019	Zachariah P. Dechant Gary L. Dechant	Existing Harrison intact, down 8", 10' south of Destiny Ave, on line with fence running south

References:

	<u>Bearing</u>	<u>Distance</u>
1) Set 3/4x24" round iron bar, 12' north of Destiny Ave, 11' west of driveway 24032 Destiny	N66E	80.23'
2) Set 3/4x24" round iron bar, down 6", 4' NW of 3" White Pine	S38E	35.26'
3) Set 3/4x24" round iron bar, down 6", in blueberry patch, south of gate	S49W	36.33'
4) Set 3/4x24" round iron bar, down 6", 4' SE of 18" Black Oak	N17W	59.47'



I, Harley Sime, do hereby certify that on the \_\_\_\_\_ day of \_\_\_\_\_ 1974, I found (evidence) (~~no evidence~~) of the NW corner of Section 4, T 18 N, R 1 W, Fourth Principal Meridian, and I re-established said corner according to the Wisconsin Statutes as shown and described hereon.

Dated this 24 day of Feb 1975.

Harley Sime  
County Surveyor  
Title

History of original corner establishment:

Description of corner evidence found:

Found Harrison monument down 4" which was set from a previous survey. This monument replaced an existing 1-1/2" iron pipe.

**See Reverse Side For Maintenance**

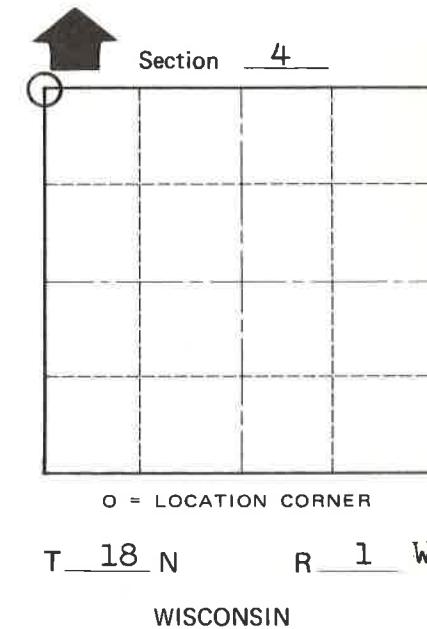
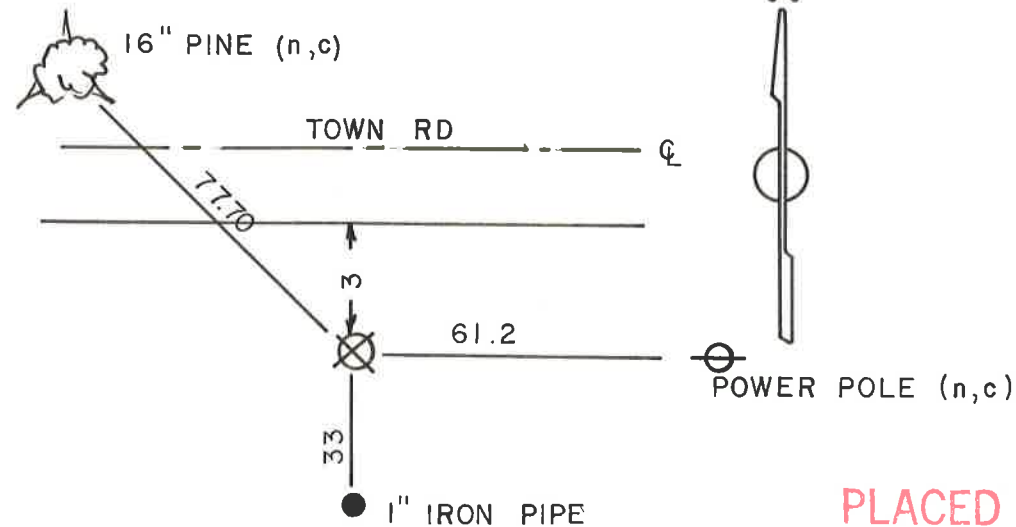
Description of corner and witness monuments, references and accessories used to perpetuate the original or re-established location of this corner:

Standard Harrison monument lying 4" below ground surface.

Accessories are as follows:

Witnesses to corner location:

- SURVEY CREW
- K. Pritzlaff - Survey Crew Chief
  - D. Malliet
  - B. Jung
  - A. Lueck



**PLACED COUNTY SURVEYOR'S SIGN 5-19-87**

COUNTY SURVEYOR FORM NO. 1

SURVEY CONTROL ORDER

Horizontal	_____
Vertical	_____

WISCONSIN COORDINATE SYSTEM

Corner	East (X)	North (Y)	Elevation (Z)	Zone
Control Sta. Name				

City, Village or Town La Grange

County of Monroe