

**U.S. PUBLIC LAND CORNER
MAINTENANCE**

132

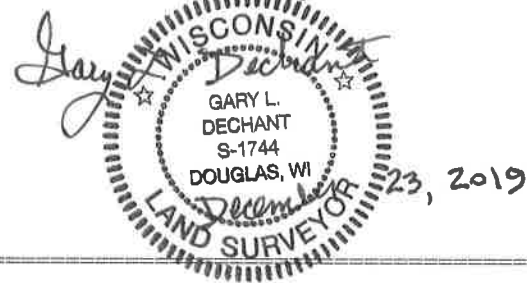
Corner ID: S1/4 Sec. 31, T19N-R1W

21901310020

<u>DATE</u>	<u>CREW</u>	<u>MONUMENT TYPE</u>
October 9, 2019	Zachariah P. Dechant Gary L. Dechant	Found Harrison, top broke off, down 8", on southerly edge of pavement of Charcoal Ave 11' south of fence running west

References:

	<u>Bearing</u>	<u>Distance</u>
1) Set 3/4x24" round iron bar, down 8" edge of field	N21E	48.34'
2) Set 3/4x24" round iron bar, down 10", 4' west of anchor of power pole	S11E	47.76
3) Set 3/4x24" round iron bar, down 8", 4' south of 10" Black Oak, 7' south of fence running west	N77W	46.11'
4) Set 3/4x24" round iron bar, down 4", 40' west of Road, 23' north of driveway 22473 Charcoal 3' east of Spruce sapling	N50W	97.14'



I, **Harley A. Sime**, do hereby certify that on the 15th day of November 19 74, I found ~~(evidence)~~ (no evidence) of the South 1/4 corner of Section 31, T 19 N, R 1 W Fourth Principal Meridian, and I re-established said corner according to the Wisconsin Statutes as shown and described hereon.

Dated this 3rd day of March 19 76.

History of original corner establishment:

Fred Holden (County Surveyor) was at this corner in June of 1908.

Description of corner evidence found:

Set this corner at a prorated distance between the section corners and on line. Fit existing conditions well.

County Surveyor
Title

**Approved: HARLEY A. SIME
MONROE CO. SURVEYOR**

**See Reverse Side
For Maintenance**

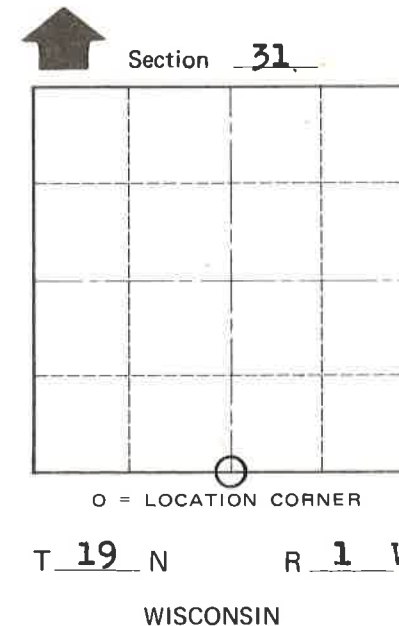
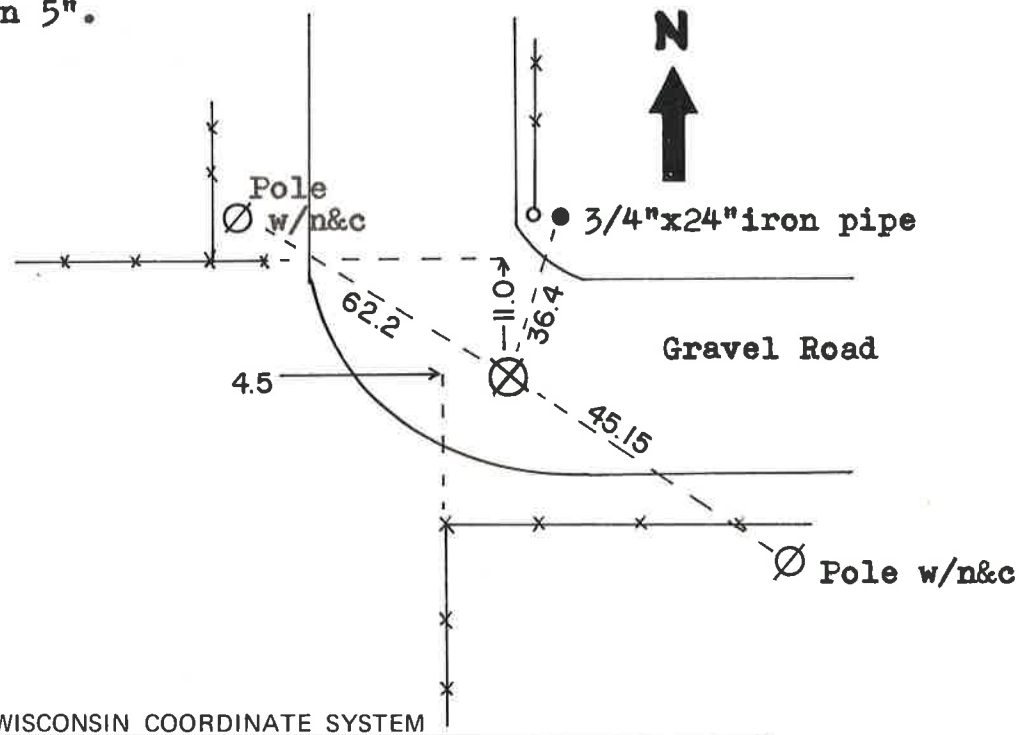
Description of corner and witness monuments, references and accessories used to perpetuate the original or re-established location of this corner:

Set a Harrison marker in the road, down 5".

Witnesses to corner location:

K. Pritzlaff-Crew Chief

A. Lueck



COUNTY SURVEYOR FORM NO. 1

SURVEY CONTROL ORDER

Horizontal	_____
Vertical	_____

WISCONSIN COORDINATE SYSTEM

Corner	East (X)	North (Y)	Elevation (Z)	Zone
Control Sta. Name				

City, Village or Town Lincoln

County of Monroe