

**U.S. PUBLIC LAND CORNER
MAINTENANCE**

131

Corner ID: SE Sec. 31, T19N-R1W

21901310000

| <u>DATE</u> | <u>CREW</u> | <u>MONUMENT TYPE</u> |
|------------------|---|--|
| October 10, 2019 | Zachariah P. Dechant Gary L. Dechant | Existing Harrison intact, 7' south of downed fence corner. Set sign 1' north. |

References:

| | <u>Bearing</u> | <u>Distance</u> |
|--|----------------|-----------------|
| 1) Set 3/4x24" square iron bar (part of car jack), down 4", 4' SW of 4" White Pine | N30E | 30.46' |
| 2) Set 1"x30" round iron bar, down 4", 4' NW of 10" Maple | S74E | 21.93' |
| 3) Set 1"x24" pinched iron pipe, down 4", 4' NE of 8" Maple | S63W | 21.13' |
| 4) Set 1 1/2"x30" iron pipe, down 4" 4' SE of 12" Maple | N70W | 22.55' |



December 23, 2019

I, Harley A. Sime, do hereby certify that on the 15th day of November 1974, I found ~~(evidence)~~ (no evidence) of the Southeast corner of Section 31, T19 N, R 1 W Fourth Principal Meridian, and I re-established said corner according to the Wisconsin Statutes as shown and described hereon.

Dated this 3rd day of March 1976.

History of original corner establishment:

In June of 1908 Fred Holden (County Surveyor) set a stone at this corner. An effort was made to recover this stone, but proved to be unsuccessful.

Description of corner evidence found:

An existing North-South fence was used, which fit record distances pretty well. The corner was set in this fence line and on line between the S1/4 corner of Section 32 and the S.W. corner of Section 31, resulting in a common agreement between present conditions and old records.

County Surveyor _____
Title

Approved: HARLEY A. SIME
MONROE CO. SURVEYOR

**See Reverse Side
For Maintenance**

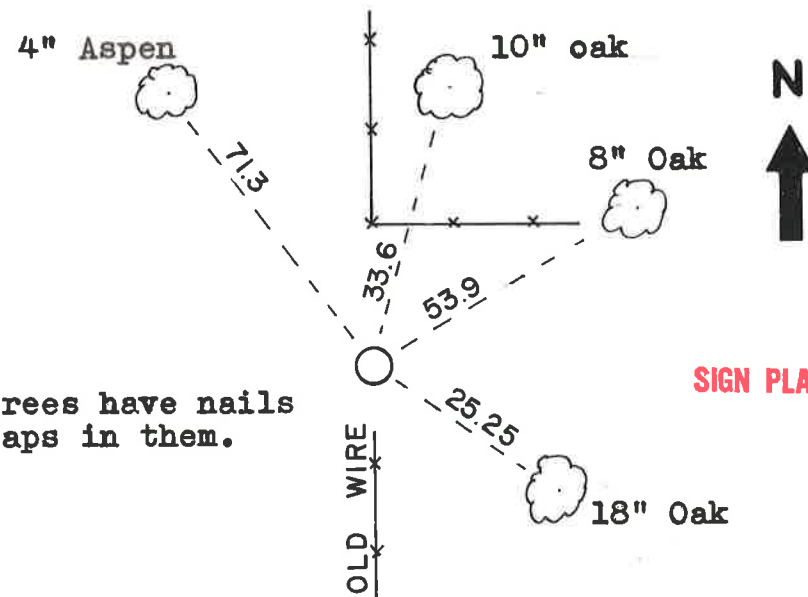
Description of corner and witness monuments, references and accessories used to perpetuate the original or re-established location of this corner:

Set a Harrison marker, up 3".

Witnesses to corner location:

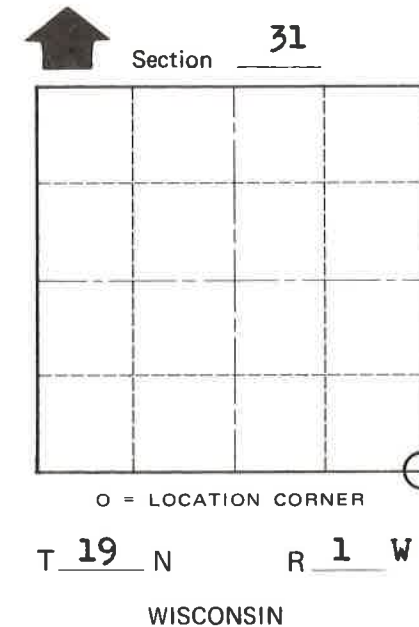
K. Pritzlaff-Crew Chief

A. Lueck



Note: All trees have nails and caps in them.

SIGN PLACED 4-22-91



COUNTY SURVEYOR FORM NO. 1

SURVEY CONTROL ORDER

| | |
|------------|-------|
| Horizontal | _____ |
| Vertical | _____ |

WISCONSIN COORDINATE SYSTEM

| Corner | East (X) | North (Y) | Elevation (Z) | Zone |
|-------------------|----------|-----------|---------------|------|
| Control Sta. Name | | | | |

City, Village or Town Lincoln

County of Monroe