

94 B

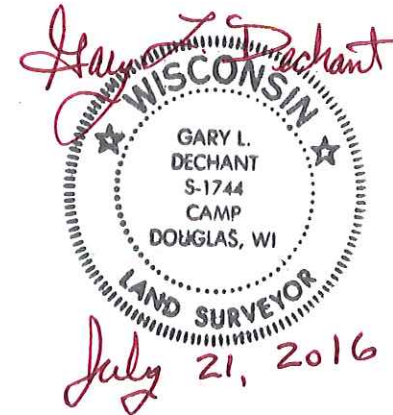
**U.S. PUBLIC LAND CORNER
MAINTENANCE**

**Corner ID : C1/4 Sec.30, T19N-R1W
21901302020**

<u>DATE</u>	<u>CREW</u>	<u>MONUMENT TYPE -----</u>
June 17, 2016	Zachariah P.Dechant Gary L. Dechant	Existing Harrison top broke off, in centerline dead end trail. Tie sheet dated Jan. 1979 shows steep bank in wrong direction. It is to the E- NE

References:

	<u>Bearing</u>	<u>Distance</u>
1) Set 3/4"x24" round iron bar, down 6", 4' NE of 10" Cherry, 25' SW of steep bank	N50E	16.28'
2) Set 3/4"x24" round iron bar, down 6", 5' south of 30" Maple, 3' north of wood post	S57E	33.72'
3) Set 3/4"x24" round iron bar, down 6", 2' north of fence	S34W	12.73'
4) Set 3/4"x24" round iron bar, down 6",	N41W	20.83'



I, Harley A. Sime, do hereby certify that on the 14th day of August 1978, I found (evidence) ~~(no evidence)~~ of the 0 1/4 corner of Section 30, T 19 N, R 1 W Fourth Principal Meridian, and I re-established said corner according to the Wisconsin Statutes as shown and described hereon.

Dated this 10th day of Jan. 1979.
Harley A. Sime, R.L.S. 355
County Surveyor
Title

History of original corner establishment:

A. S. Ingalls was at this corner in April of 1873.

Description of corner evidence found:

Replaced iron pipe with Harrison Monument.

See Reverse Side For Maintenance

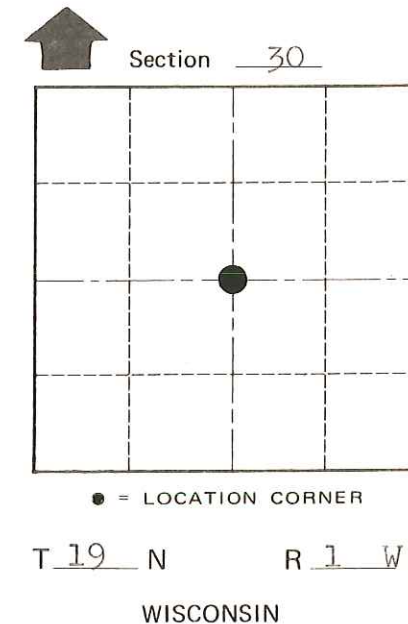
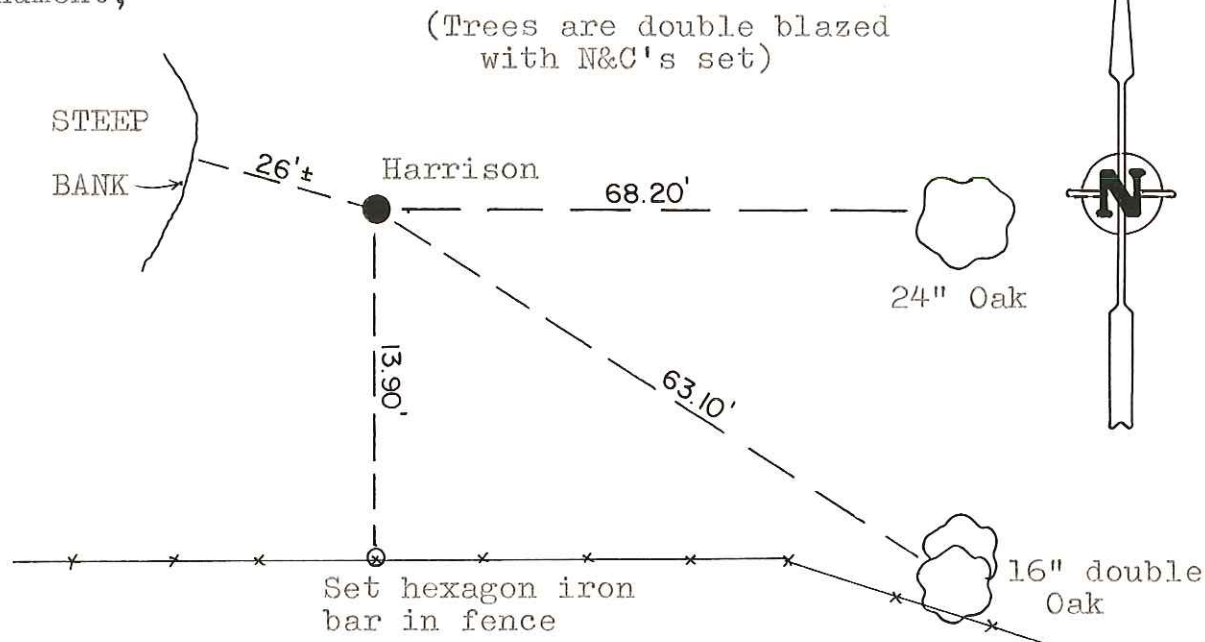
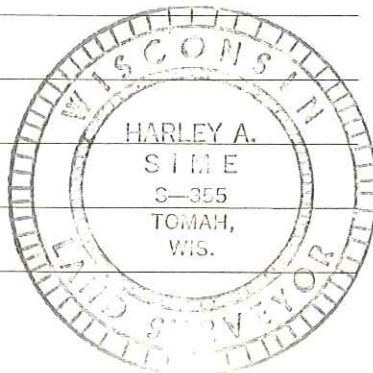
Description of corner and witness monuments, references and accessories used to perpetuate the original or re-established location of this corner:

Replaced iron pipe with Harrison Monument, up 1".

Witnesses to corner location:

B. Meyer

K. Lenz



SURVEY CONTROL ORDER

Horizontal	_____
Vertical	_____

WISCONSIN COORDINATE SYSTEM

Corner	East (X)	North (Y)	Elevation (Z)	Zone
Control Sta. Name				

City, Village or Town Lincoln

County of Monroe

COUNTY SURVEYOR FORM NO. 1