

CERTIFICATE

CERTIFIED LAND CORNER

No. 112

21901300020

I, Garold A. Sime, do hereby certify that on the _____ day of September 19 78, I found (evidence) (~~no evidence~~) of the N¹/₄ corner of Section 31, T 19 N, R 1 W Fourth Principal Meridian, and I re-established said corner according to the Wisconsin Statutes as shown and described hereon.

History of original corner establishment:
No known recorded history since the original government survey.

Dated this 11th day of Jan. 19 79.

Description of corner evidence found:

Set the corner on straight line between the NW & NE corners of Sec.31 and 2640.00' west of the Northeast corner of Sec.31 as per a Certified Survey Map done by H.A.Sime in 1966.

Garold A. Sime, R.L.S. 1261

County Surveyor's Office
Title

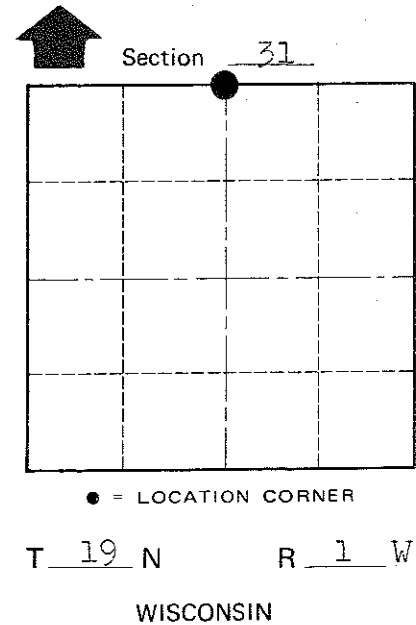
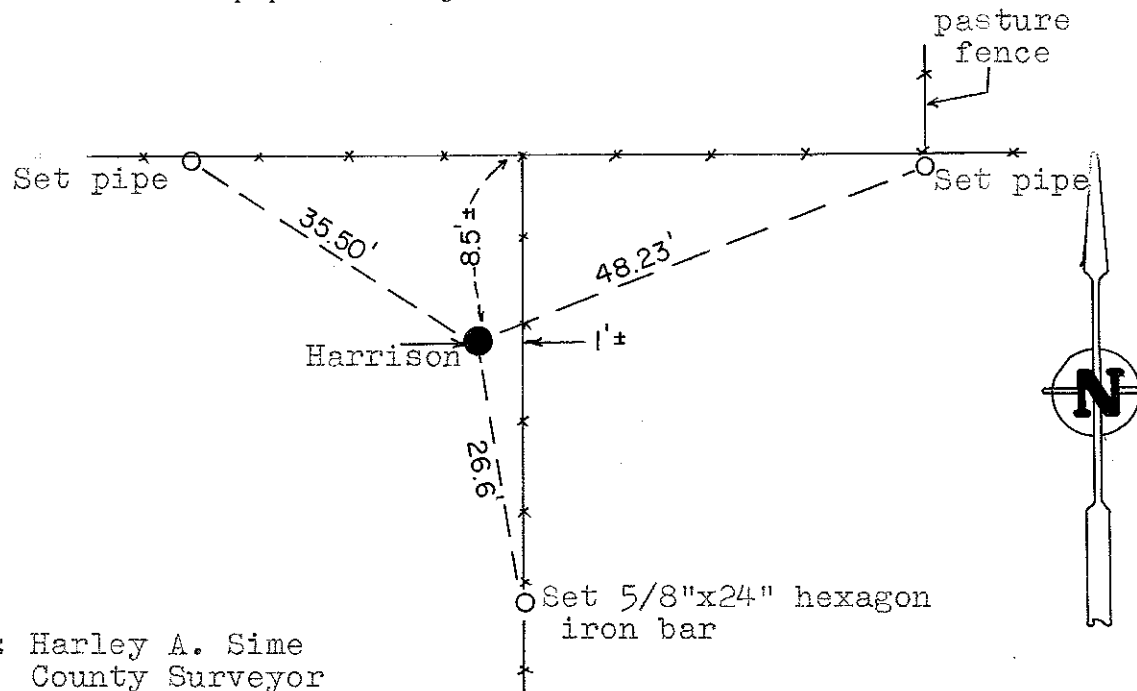
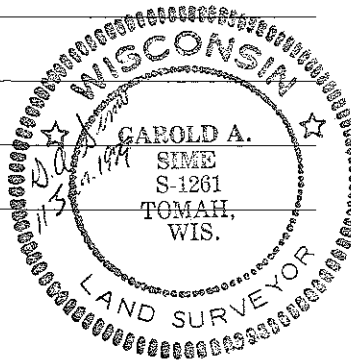
COUNTY SURVEYOR FORM NO. 1

Description of corner and witness monuments, references and accessories used to perpetuate the original or re-established location of this corner:

Witnesses to corner location:

G. Sime-Crew Chief

R. Lamb



Approved by: Harley A. Sime
County Surveyor

SURVEY CONTROL ORDER

Horizontal _____

Vertical _____

WISCONSIN COORDINATE SYSTEM

Corner	East (X)	North (Y)	Elevation (Z)	Zone
Control Sta. Name				

City, Village or Town Lincoln
County of Monroe