

CERTIFICATE

UPDATED
CERTIFIED LAND CORNER

21901292000

No. 96

Page 2

I, Harley A. Sime, do hereby certify that on the 25th day of March 19 82, I found (evidence) (no evidence) of the W^{1/4} corner of Section 28, T 19 N, R 1 W Fourth Principal Meridian, and I re-established said corner according to the Wisconsin Statutes as shown and described hereon.

Dated this 29th day of March 19 82.

Harley A. Sime, R.L.S. 355

County Surveyor

Title

History of corner establishment since Original Government Survey

No known recorded history since the original government survey.

Update: No additional history of corner location since this tie sheet was orig. done.

Description of corner evidence found:

Set on line between the NW and SW section corners and on line with the existing fence to the west.

Update: Rick Neitzel notified this office that the monument at this corner had been destroyed. We found the bottom portion of the Harrison Monument still intact. Replaced same with Cast Iron T.C.P. Marker.

Description of corner and witness monuments, references and accessories used to perpetuate the original or re-established location of this corner:

Set Cast Iron T.C.P. Marker at corner

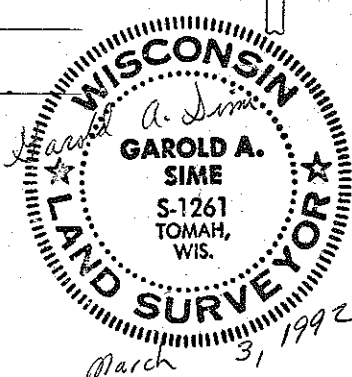
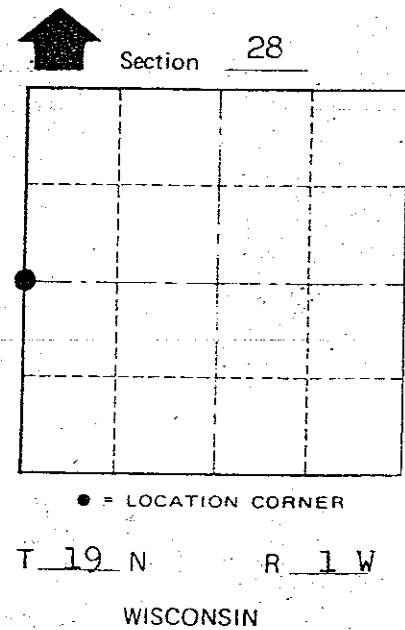
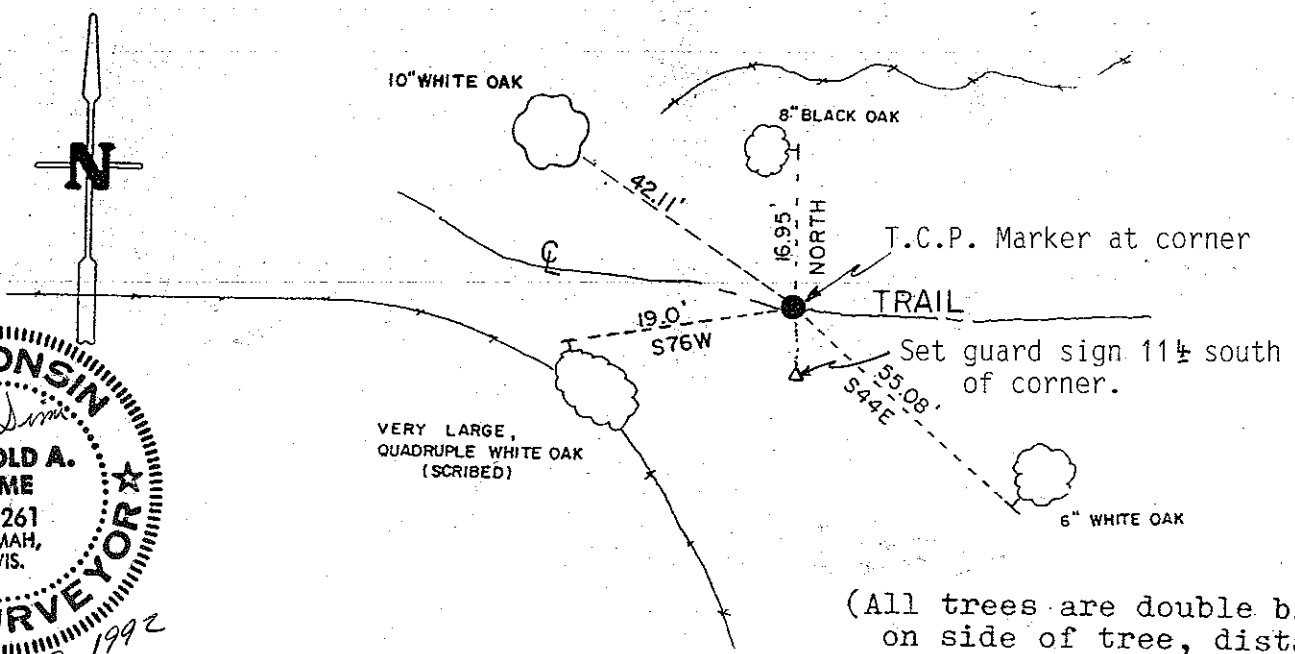
Witnesses to corner location:

G. Dechant (D)

B. Meyer (M)

Crew: John F. Kenworthy

Garold A. Sime, R.L.S.



(All trees are double blazed with nails set on side of tree, distance to nail)

COUNTY SURVEYOR FORM NO. 1

SURVEY CONTROL ORDER	
Horizontal	
Vertical	
Corner	
Control Sta. Name	

WISCONSIN COORDINATE SYSTEM

East (X)	North (Y)	Elevation (Z)	Zone

~~City, Village or Town~~ Lincoln
County of Monroe

See New Sheet

I, Harley A. Sime, do hereby certify that on the 25th day of March 19 82, I found (evidence) (no evidence) of the W/4 corner of Section 28, T 19 N, R 1 W Fourth Principal Meridian, and I re-established said corner according to the Wisconsin Statutes as shown and described hereon.

Dated this 29th day of March 19 82.

Harley A. Sime, R.L.S. 355

County Surveyor

Title

Approved: **HARLEY A. SIME**

MONROE CO. SURVEYOR

Description of corner and witness monuments, references and accessories used to perpetuate the original or re-established location of this corner:

Witnesses to corner location:

G. Dechant (D)

B. Meyer (M)

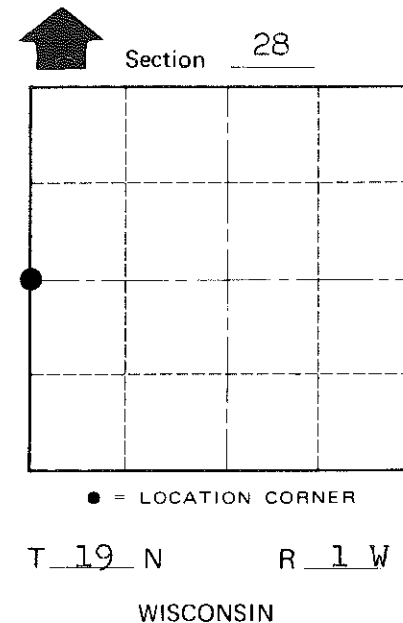
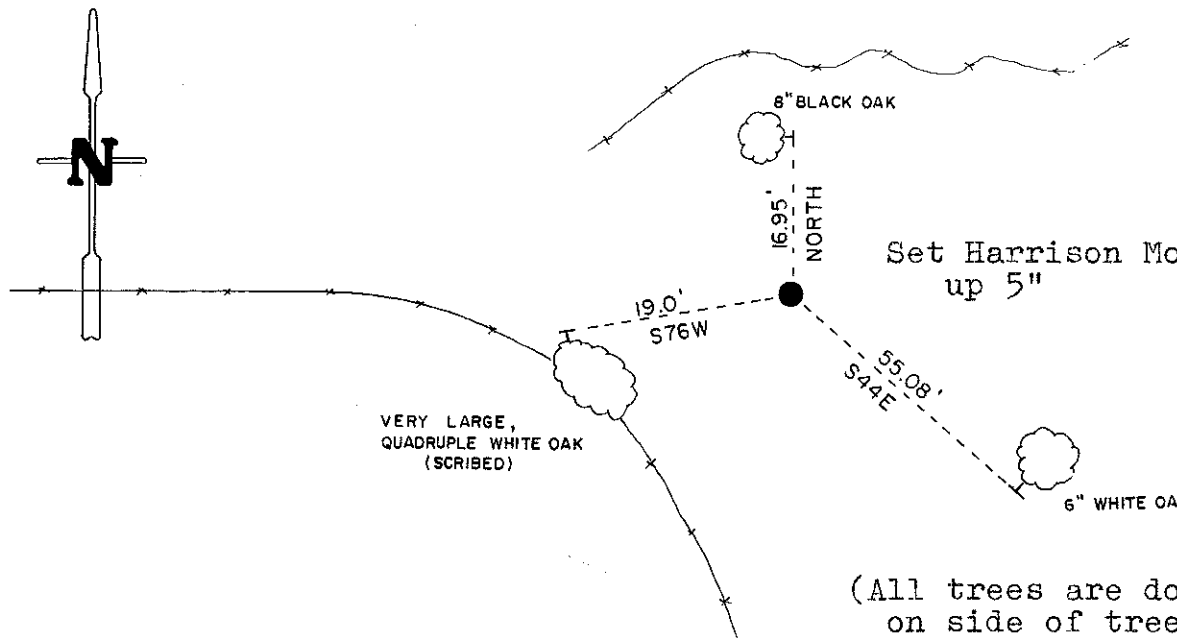
History of corner establishment since Original Government Survey

No known recorded history since the original government survey.

Description of corner evidence found:

Set on line between the NW and SW section corners and on line with the existing fence to the west.

COUNTY SURVEYOR FORM NO. 1



(All trees are double blazed with nails set on side of tree, distance to nail)

SURVEY CONTROL ORDER

Horizontal	_____
Vertical	_____

WISCONSIN COORDINATE SYSTEM

Corner	East (X)	North (Y)	Elevation (Z)	Zone
Control Sta. Name				

~~City, Village or~~ Town Lincoln
County of Monroe