

Stock No. 26273

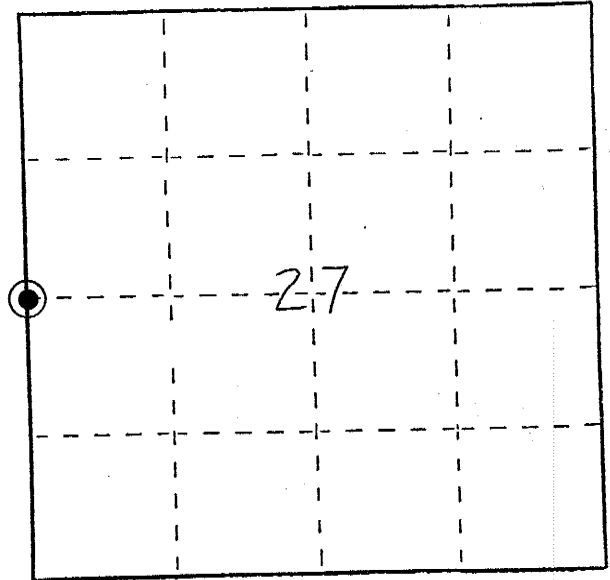
U. S. PUBLIC LAND SURVEY MONUMENT RECORD

INSTRUCTIONS: This record shall show the location of the corner and shall include all of the following nine elements (a through i).

(a) Identify the corner by reference to the U.S. public land survey system.

⊙ = Corner monument restored.

West 1/4 corner of Section 27, T19N, R1W, Fourth Principal Meridian, Town of Lincoln, Monroe County, Wisconsin.

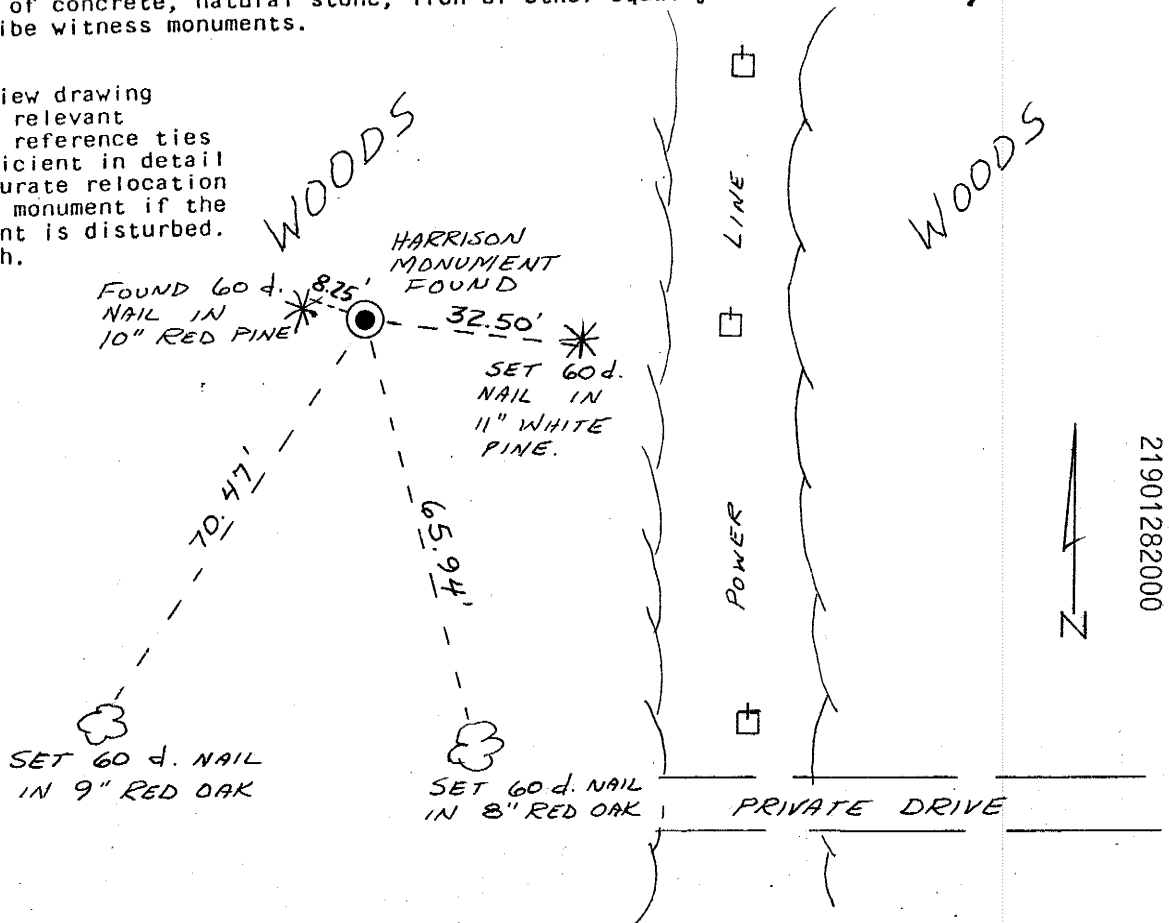


(b) Describe any record evidence, monument evidence, occupational evidence, testimonial evidence or any other material evidence you considered, and whether the monument was found or placed.

The Harrison monument at this corner and one previous witness monument were found on April 19, 1993 by Daniel M. Murray. (See previous Certified Land Corner record by Harley A. Sime dated March 29, 1982). Three additional tie points were added as shown below.

(c) In the plan view drawing below, provide reference ties to at least 4 witness monuments, or, if the location is within a municipality, to at least 2 witness monuments. (Witness monuments shall be made of concrete, natural stone, iron or other equally durable material.) Describe witness monuments.

(d) Show a plan view drawing depicting the relevant monuments and reference ties which is sufficient in detail to enable accurate relocation of the corner monument if the corner monument is disturbed. Indicate north.



21901282000

- (e) Describe any material discrepancy between the location of the corner as restored or reestablished and the location of that corner as previously restored or reestablished by distance and direction. Show the discrepancy on the plan view drawing under (d), above. Show the distances between the corner as previously restored or reestablished and (1) the corner as restored or reestablished, and (2) to at least 2 of the witness monuments shown on the drawing in (d), above.

No known discrepancies.

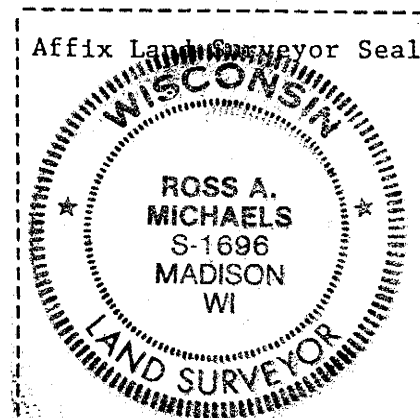
- (f) Was the corner restored through acceptance of (1) an obliterated evidence location, or, (2) a found perpetuated location?

A found perpetuated location.

- (g&h) Was the corner reestablished through lost corner proportionate methods? If so, show the method, including the directions and distances to other public land survey corners used as evidence or used for proportioning in determining the corner location?

Not a lost corner.

(i) I, Ross A. Michaels
(type or print name) certify that the corner location shown on this record was determined by me or under my direction and control and that this U.S. Public Land Survey Monument Record is correct and complete to the best of my knowledge and belief.
Ross A. Michaels Oct 22, 1993



I, Harley A. Sime, do hereby certify that on the 23rd day of March 19 82, I found ~~(evidence)~~ (no evidence) of the E $\frac{1}{4}$ corner of Section 28, T 19 N, R 1 W Fourth Principal Meridian, and I re-established said corner according to the Wisconsin Statutes as shown and described hereon.

Dated this 29th day of March 19 82.

Harley A. Sime, R.L.S. 355

County Surveyor

Approved: ^{Title} **HARLEY A. SIME**
MONROE CO. SURVEYOR

History of corner establishment since Original Government Survey

No known recorded history since the original government survey.

Description of corner evidence found:

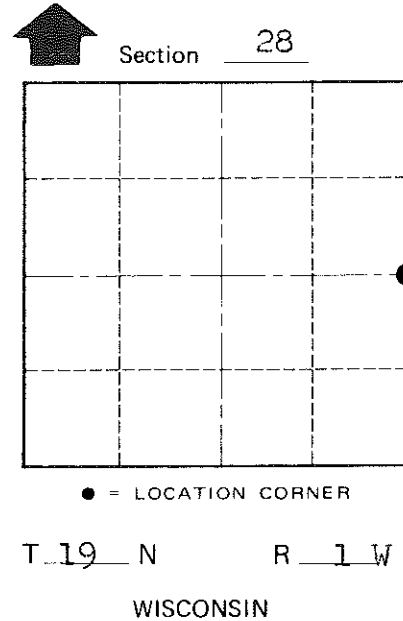
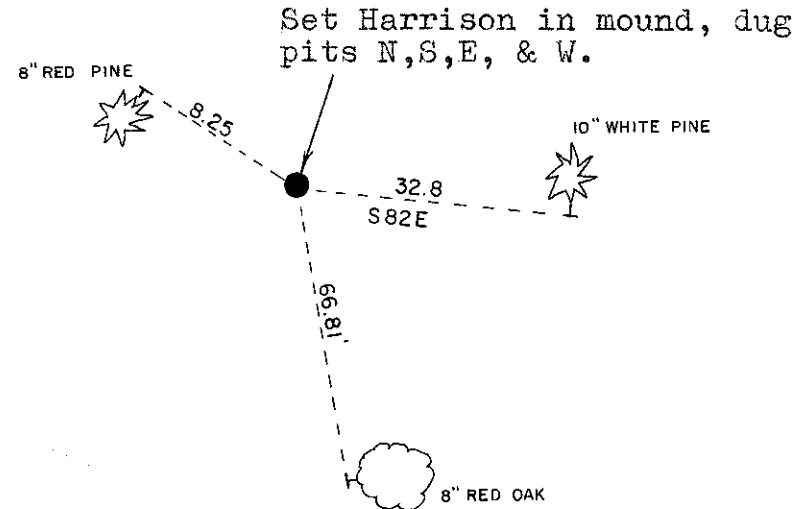
Found an existing 1 $\frac{1}{4}$ " round iron bar at the SE corner of Section 28 and an existing iron pipe at the NE corner of the SE $\frac{1}{4}$ -SE $\frac{1}{4}$ of Section 28. Set this corner (W $\frac{1}{4}$ Sec. 28) by doubling the distance and projecting the line North between said existing corners.

Description of corner and witness monuments, references and accessories used to perpetuate the original or re-established location of this corner:

Witnesses to corner location:

G. Dechant (D)

B. Meyer (M)



COUNTY SURVEYOR FORM NO. 1

SURVEY CONTROL ORDER

Horizontal _____

Vertical _____

WISCONSIN COORDINATE SYSTEM

Corner	East (X)	North (Y)	Elevation (Z)	Zone
Control Sta. Name				

(All trees double blazed, scribed, and w/nails on side of tree)

~~City/Village or~~ Town Lincoln
County of Monroe