


**U.S. PUBLIC LAND CORNER  
MAINTENANCE**

# 107

**Corner ID:** NE Sec.33, T19N-R1W  
**21901280000**

<u>DATE</u>	<u>CREW</u>	<u>MONUMENT INFO</u>	<u>Compass Bearing</u>	<u>Distance</u>
August 17, 2020	Zachariah P. Dechant Gary L. Dechant	Found 1 1/4" round iron bar, 6' south of east-west trail, sign 1/2' south, steel post 1' south		
		1) Set 2' section of steel T post, down 6"	N58E	24.80'
		2) Set 2' section of T' post, down 6", 4" North of 10" White Pine	S2E	26.84'
		3) Set 2' section of T post, down 6", 4' east of 8" White Pine	S89W	34.94'
		4) Set 2' section of T post, down 6"	NW	25.88'

*Gary L. Dechant*  
  
*September 22, 2020*

I, Harley A. Sime, do hereby certify that on the 2nd day of March 1982, I found (evidence) ~~(no evidence)~~ of the NE corner of Section 33, T 19 N, R 1 W Fourth Principal Meridian, and I re-established said corner according to the Wisconsin Statutes as shown and described hereon.

Dated this 29th day of March 1982.

Harley A. Sime, R.L.S. 355

County Surveyor

**Approved: HARLEY A. SIME**  
**MONROE CO. SURVEYOR**

Description of corner and witness monuments, references and accessories used to perpetuate the original or re-established location of this corner:

Witnesses to corner location:

G. Dechant (D)

B. Meyer (M)

**History of corner establishment since Original Government Survey**  
H. Sime found a 1" iron pipe at this corner in October of 1968. H. Sime used it again in October of 1969. Doug Malliet could not find Sime's iron pipe but after retracing Sime's surveys reset the corner with a 1 1/4" round iron bar in July of 1977.

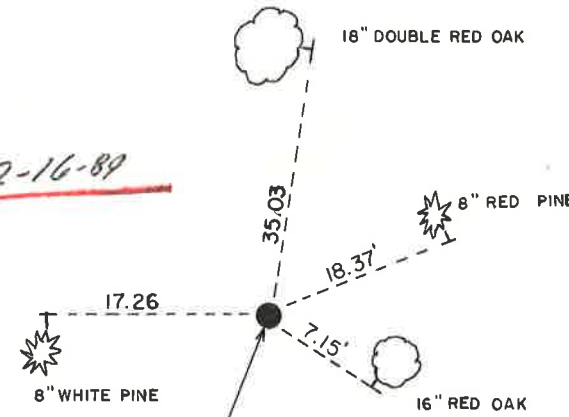
Description of corner evidence found:

We found the 1 1/4" round iron bar at the corner and ties were taken.

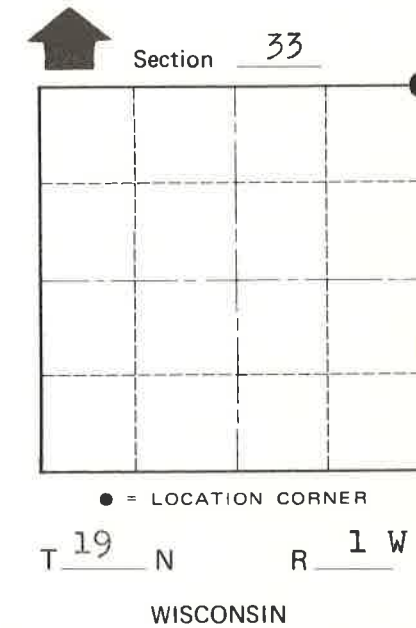
**See Reverse Side For Maintenance**



**SIGN PLACED 2-16-89**



Existing 1 1/4" round iron bar on East side of Oak stump, could not set Harrison because of stump, steel fence post on S. side of stump.



**SURVEY CONTROL ORDER**

Horizontal	_____
Vertical	_____

**WISCONSIN COORDINATE SYSTEM**

Corner	East (X)	North (Y)	Elevation (Z)	Zone
Control Sta. Name				

(All trees are double blazed with N&C in lower blaze. All trees also have nail in side of tree, distances to nails on side of tree. Trees also scribed.)

City, Village or Town Lincoln  
County of Monroe

COUNTY SURVEYOR FORM NO. 1