

21901360020

I, Harley A. Sime, do hereby certify that on the 7th day of October 1975, I found (evidence) (~~no evidence~~) of the South 1/4 corner of Section 36, T 19 N, R 1 W, Fourth Principal Meridian, and I re-established said corner according to the Wisconsin Statutes as shown and described hereon.

History of original corner establishment:

In June of 1901 Fred Holden surveyed Section 36 and set a buggy axle at this corner.

Description of corner evidence found:

Found Holden's axle. Removed the axle and replaced it with a Harrison marker.

Dated this 3rd day of March 1976.

County Surveyor
Title

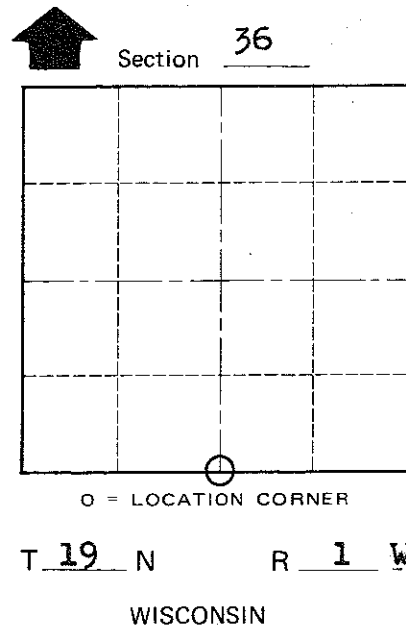
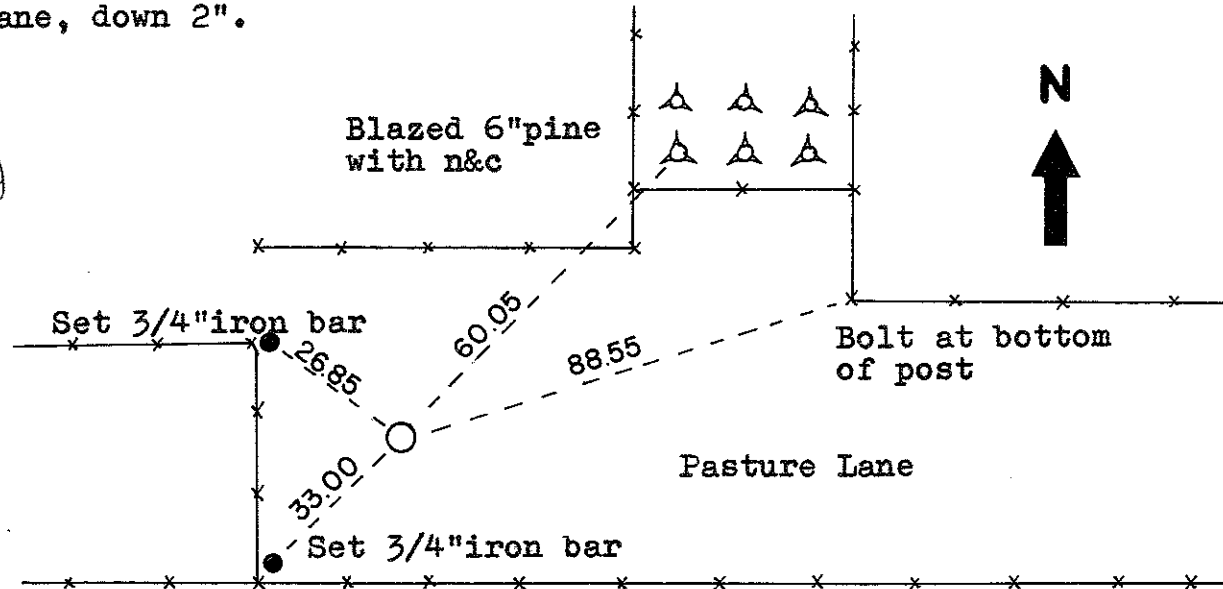
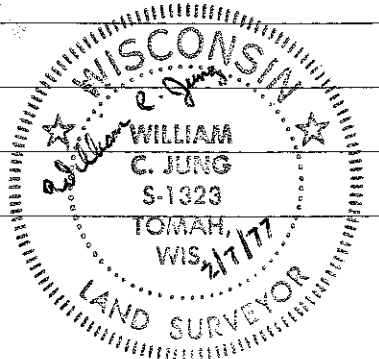
Approved: HARLEY A. SIME
MONROE CO. SURVEYOR

Description of corner and witness monuments, references and accessories used to perpetuate the original or re-established location of this corner:

Set a Harrison marker in the lane, down 2".

Witnesses to corner location:

W.C. Jung-Crew Chief *W.C. Jung*
A. Lueck



COUNTY SURVEYOR FORM NO. 1

SURVEY CONTROL ORDER

Horizontal _____
Vertical _____

WISCONSIN COORDINATE SYSTEM

| Corner | East (X) | North (Y) | Elevation (Z) | Zone |
|-------------------|----------|-----------|---------------|------|
| Control Sta. Name | | | | |

City, Village or Town Lincoln
County of Monroe