

21901350000

I, Harley A. Sime, do hereby certify that on the 15th day of October 1975, I found ~~(evidence)~~ (no evidence) of the Southwest corner of Section 36, T 19 N, R 1 W, Fourth Principal Meridian, and I re-established said corner according to the Wisconsin Statutes as shown and described hereon.

Dated this 3rd day of March 1976.

County Surveyor

Title

History of original corner establishment:

In June of 1901 Fred Holden placed an iron sleigh shoe at this corner while surveying Section 36.

Description of corner evidence found:

Could not find Holden's corner. It was probably destroyed when the ditch was put in. Set the corner by projecting a line through the S1/4 and S.E. corners of Section 36 and at a distance from the S1/4 equivalent to that from the S1/4 to the S.E. corner.

Note: Arnold Storkel stated that when the fence to the East was put in, it was not built on the Section line.

Description of corner and witness monuments, references and accessories used to perpetuate the original or re-established location of this corner:

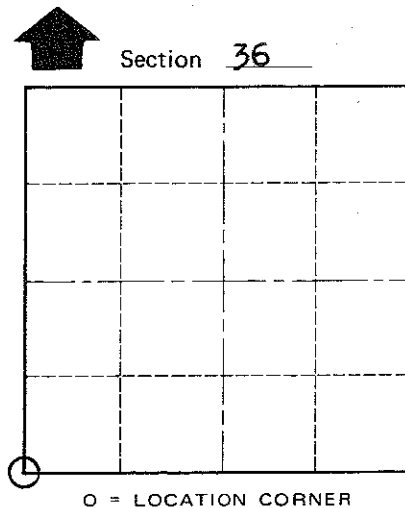
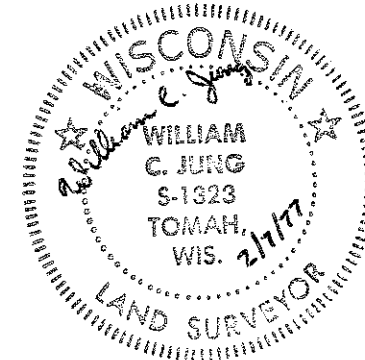
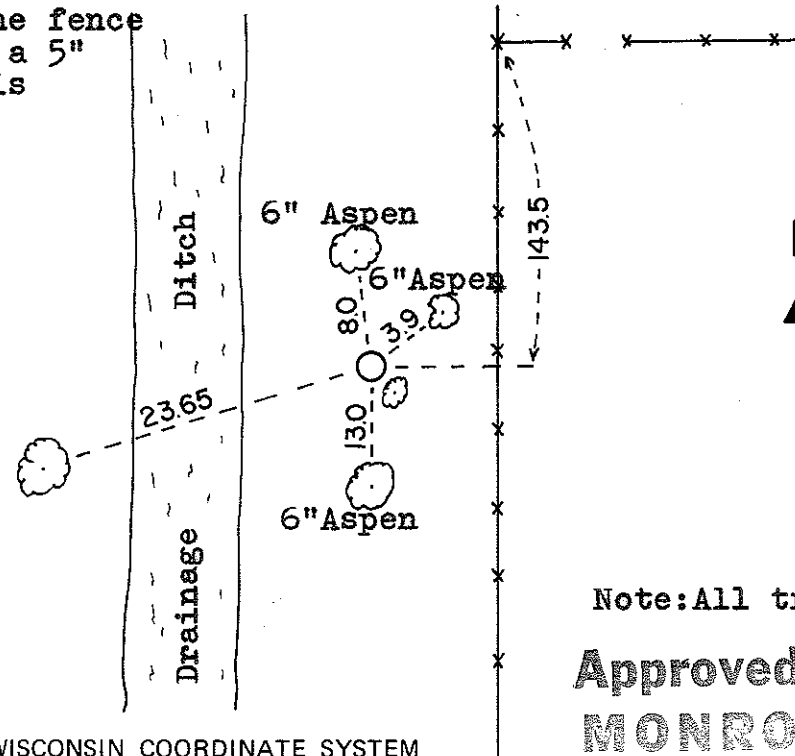
Set a 2" iron pipe, up 2', 8.9' from the fence and 9.5' from the ditch. There is also a 5" birch 1.1' S.E. of the pipe. The pipe is witnesses to corner location: pinched at the top.

W.C. Jung - Crew Chief *W.C. Jung*

A. Lueck

COUNTY SURVEYOR FORM NO. 1

Double oak



T 19 N R 1 W

WISCONSIN

Note: All trees blazed.

Approved: HARLEY A. SIME  
MONROE CO. SURVEYOR

City, Village or Town Lincoln

County of Monroe

SURVEY CONTROL ORDER

Horizontal	_____
Vertical	_____

WISCONSIN COORDINATE SYSTEM

Corner	East (X)	North (Y)	Elevation (Z)	Zone
Control Sta. Name				