

CERTIFICATE

I, Harley A. Sime, do hereby certify that on the 2 day of February 1978, I found (evidence) (no evidence) of the CN 1/16 corner of Section 32, T19 N, R 1 W, Fourth Principal Meridian, and I re-established said corner according to the Wisconsin Statutes as shown and described hereon.  
 Dated this 6<sup>th</sup> day of Feb. 1978.

\_\_\_\_\_  
 County Surveyor  
Title

CERTIFIED LAND CORNER

History of original corner establishment:

Description of corner evidence found:

Set as Per Law after surveying exterior of Section

No. 115 F

**21901323020**

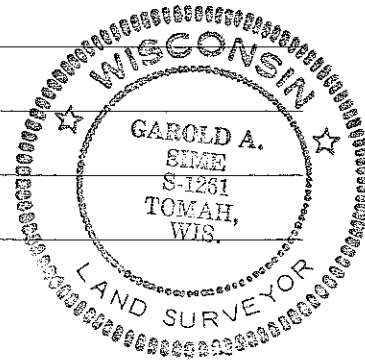
COUNTY SURVEYOR FORM NO. 1

Description of corner and witness monuments, references and accessories used to perpetuate the original or re-established location of this corner:

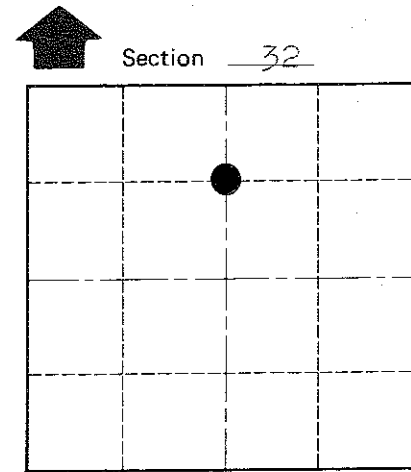
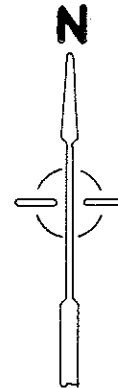
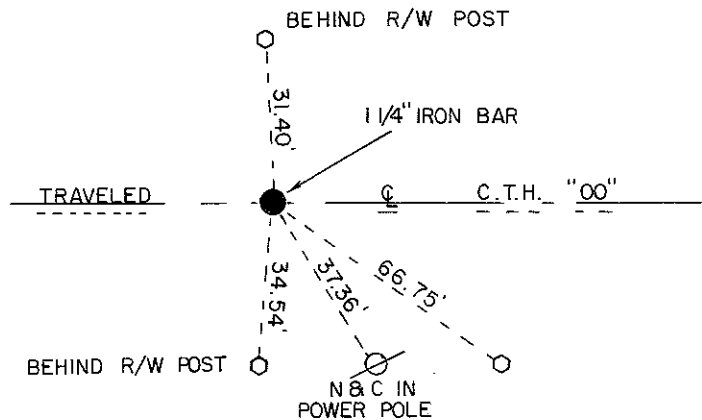
Set 1 1/4" x 30" Round Iron Bar

Witnesses to corner location:

G.A. Sime, Crew Chief *G.A. Sime*  
C. Pietz  
G. Dechant  
L. Radcliffe



○ = 5/8" HEXAGONAL IRON BAR



○ = LOCATION CORNER

T 19 N R 1 W  
 WISCONSIN

SURVEY CONTROL ORDER

Horizontal	_____
Vertical	_____

WISCONSIN COORDINATE SYSTEM

Corner	East (X)	North (Y)	Elevation (Z)	Zone
Control Sta. Name				

City, Village or Town Lincoln  
 County of Monroe