

**U.S. PUBLIC LAND CORNER
MAINTENANCE**

10
Corner ID: N1/4 Sec. 5, T18N-R1W
21901320020

DATE	CREW	MONUMENT TYPE
October 7, 2019	Zachariah P. Dechant Gary L. Dechant	Existing Harrison intact, down 8" in centerline of Ellsworth Road. East of STH "12".

References:

	Bearing	Distance
1) Set 3/4x24" round iron bar, down 10" on line with south side of garage to the west (7133 Ellsworth)	N27E	53.56'
2) Set 3/4x24" round iron bar, down 6", in line with power line	S30E	30.81'
3) Set 3/4x24" round iron bar, down 6", in line with power line	S27W	34.44'
4) Set 3/4x24" round iron bar, down 3", 3' east of SE corner of garage (7133 Ellsworth)	N30W	46.64'

Harrison and reference corners set on straight lines.



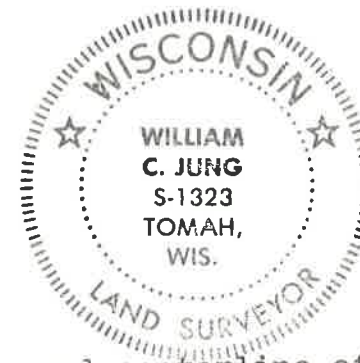
CERTIFICATE

CERTIFIED LAND CORNER

No. 10

I, Harley Sime 28th, do hereby certify that on the 28th day of October 1974, I found (evidence) ~~(no evidence)~~ of the N 1/4 corner of Section 5, T 18 N, R 1 W, Fourth Principal Meridian, and I re-established said corner according to the Wisconsin Statutes as shown and described hereon.

History of original corner establishment:



Description of corner evidence found:

Found existing iron pipe in fence line and centerline of town road. I replaced this 1" iron with a Harrison monument, setting it 4" below surface.

Dated this 24 day of Feb 1975.

Harley Sime
County Surveyor
Title

COUNTY SURVEYOR FORM NO. 1

Description of corner and witness monuments, references and accessories used to perpetuate the original or re-established location of this corner:
Standard Harrison monument set 4" below gravel.

Accessories are as follows :

Witnesses to corner location:

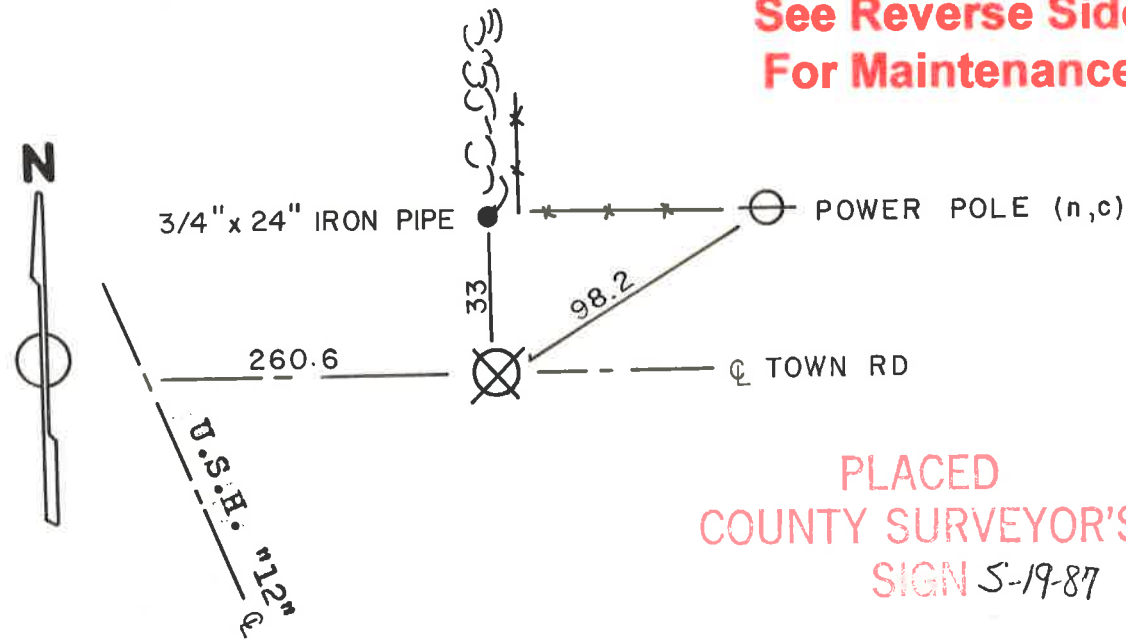
SURVEY CREW

K. Pritzlaff - Survey Crew Chief

D. Malliet

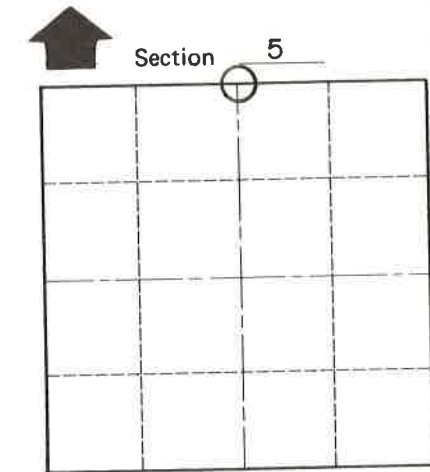
B. Jung W.C. Jung

A. Lueck



See Reverse Side For Maintenance

PLACED COUNTY SURVEYOR'S SIGN 5-19-87



T 18 N R 1 W
WISCONSIN

SURVEY CONTROL ORDER

Horizontal _____
Vertical _____

WISCONSIN COORDINATE SYSTEM

Corner	East (X)	North (Y)	Elevation (Z)	Zone
Control Sta. Name				

City, Village or Town La Grange
County of Monroe