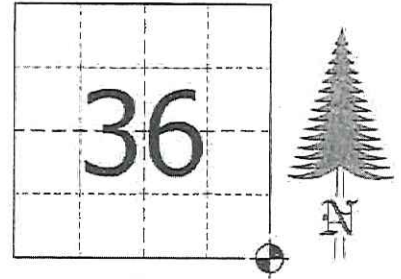


JACKSON COUNTY - U.S. PUBLIC LAND SURVEY MONUMENT RECORD

TYPE OF MONUMENT: 2-3/8" O.D. x 36" Brass Capped Iron Pipe
 REFERENCED FOR SURVEY RECORDED IN CSM# _____ OR CSR# _____
 SURVEYOR'S FILE# OR PROJECT# Fieldbook: T20N-R1E, Pg. 28 - 29
 DRAWN BY: Ethan Remus
 WITNESS: Ethan Remus

CORNER VOL. 15, PAGE 2456
 CORNER# 22001360000
 SECTION 36, T 20 N, R 1W # |
 SE CORNER

GEOGRAPHIC LOCATION: _____ NAD 83 (91) WISCRS- Jackson County
 COUNTY COORDINATE SYSTEM
 (TO BE ASSIGNED BY COUNTY)
 LATT: 44°09'40.06437" N
 LONG: 90°26'08.63612" W
 N = 48671.7956
 E = 195805.8152



LOCATION
 (INDICATE W/ MONUMENT SYMBOL)

BASIS FOR MONUMENT LOCATION:

Please describe if this is a found, obliterated or lost corner. Give a complete history of the corner listing the vol. & page, dates, surveyor and description of found monument. Please list all parole testimony and who provided it as well as other witness of recovery. Please describe the best way to reach this corner. Indicate how obstructed this monument might be for GPS observations. Continue on backside if necessary.

* Joshua Hathaway set a post for the Township corner as part of the original Township Line survey in 1839. He referenced four bearing trees, a 10" Birch S70°W - 19.80', a 14" Maple N59°W - 25.08', a 12" White Pine S43°E - 18.48', and a 12" White Pine N25°E - 22.44'.

* S.L. Kennedy may have been to this corner around 1937, but I could find no record of it.

* Gary Dechant visited this corner in 1987. He found no evidence of a monument here so he reestablished the corner by double proportion. He set a cast iron Harrison monument with a witness sign 1' North. He dug pits N-S-E-W and referenced four bearing trees. (See previous tie sheet).

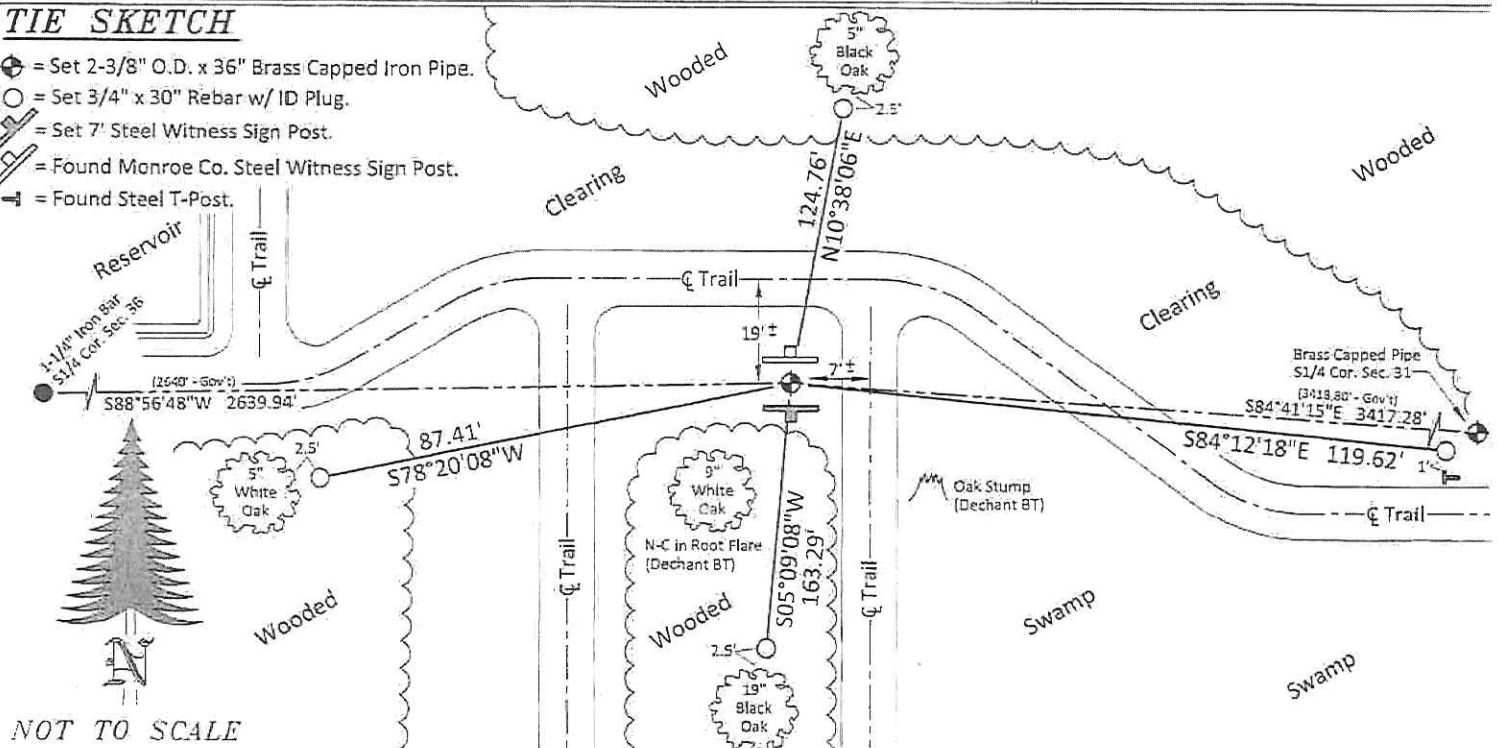
* In November of 2015, I found Dechant's Harrison monument with the top 7-1/4" of it broken off and laying on top of a mound of earth. Pits plain N-S-E-W. Monroe Co. Witness sign about 6" NEly. Dechant's two NEly bearing trees have been grubbed out and his SE BT is a stump. His SW BT was still OK, now a 9" White Oak with a nail and cap in the root flare. I dug in the mound of earth and found the remaining 22-1/2" of Dechant's Harrison in position. It did not appear to be leaning, and with only one reference remaining, I decided to accept the apparent center of the broken Harrison as the section corner. I referenced this spot, removed the Harrison and replaced it with a 2-3/8" O.D. x 36" brass capped iron pipe driven down flush with the mound. I drove a 7" steel witness sign post 1' South and laid the broken Harrison flat on the North side. I moved the Monroe Co. Witness Sign to 1' North. I deepened the North and East pits and used the dirt to build up the mound. I drove four rebar for references as depicted below. The corner is open for GPS and can be accessed by truck from the NW, driving dike roads across Olson's cranberry marsh.

CERTIFIED CORRECT AND COMPLETE TO THE BEST OF MY KNOWLEDGE AND BELIEF:

 Professional Land Surveyor
 DATE: March 16, 2016

TIE SKETCH

- ⊕ = Set 2-3/8" O.D. x 36" Brass Capped Iron Pipe.
- = Set 3/4" x 30" Rebar w/ 1D Plug.
- ⊕ = Set 7" Steel Witness Sign Post.
- ⊕ = Found Monroe Co. Steel Witness Sign Post.
- ⊕ = Found Steel T-Post.



NOT TO SCALE

I, Gary L. Dechant, do hereby certify that on the 30th day of December 1988, I found ~~(evidence)~~ (no evidence) of the NE corner of Section 1, T 19 N, R 1 W Fourth Principal Meridian, and I re-established said corner according to the Wisconsin Statutes as shown and described hereon.

Dated this 5th day of Jan 1989.

Gary L. Dechant

Reg. Land Surveyor, S-1744
Title

History of corner establishment since Original Government Survey

Kennedy may have been at this corner in the early 1900's. Visited this corner in a former survey in the winter of 1987, found no monument, established a computed corner by D.P.M.

Description of corner evidence found:

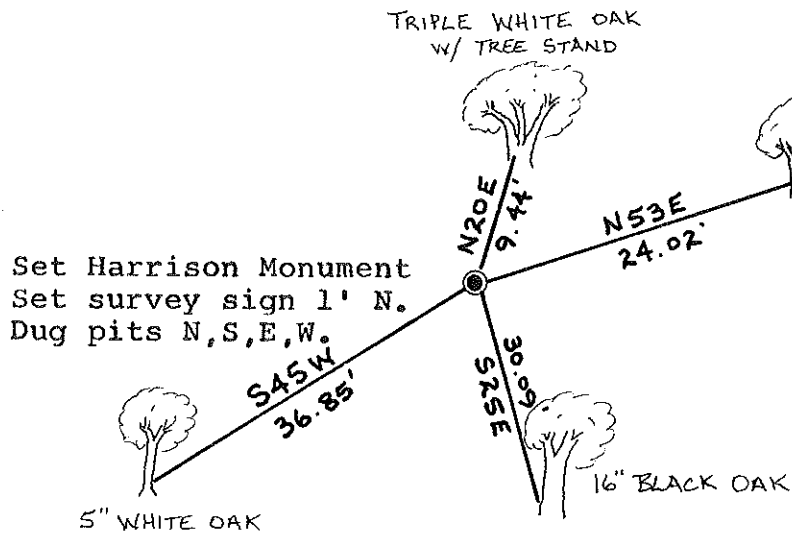
Set this corner by D.P.M. Corners used were the E $\frac{1}{4}$ corner Sec. 1, T19N-R1W, E $\frac{1}{4}$ corner Sec. 36, T20N-R1W, N $\frac{1}{4}$ corner Sec. 6, T19N-R1E, and NW corner Sec. 1, T19N-R1W. This re-established corner best fits the distances given in the Original Government Survey and fits them well.

Description of corner and witness monuments, references and accessories used to perpetuate the original or re-established location of this corner:

Witnesses to corner location:

Timothy S. Frederick

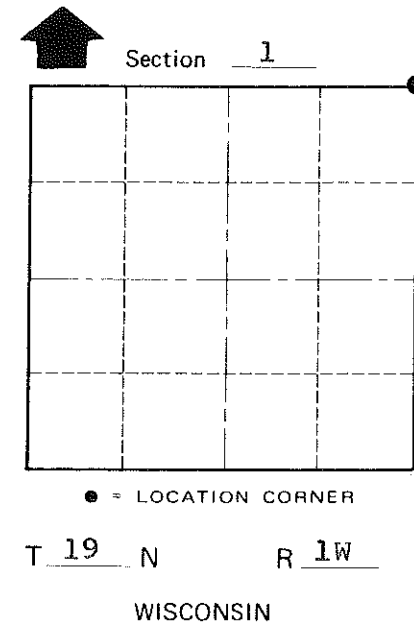
Gary L. Dechant



Set Harrison Monument
Set survey sign 1' N.
Dug pits N,S,E,W.

(Trees double blazed with N&C's set)

Gary L. Dechant
WISCONSIN
GARY L. DECHANT
S-1744
CAMP
DOUGLAS, WI
LAND SURVEYOR
January 5, 1989



COUNTY SURVEYOR FORM NO. 1

SURVEY CONTROL ORDER

Horizontal	_____
Vertical	_____

WISCONSIN COORDINATE SYSTEM

Corner	East (X)	North (Y)	Elevation (Z)	Zone
Control Sta. Name				

~~City, Village or~~ Town Lincoln

County of Monroe