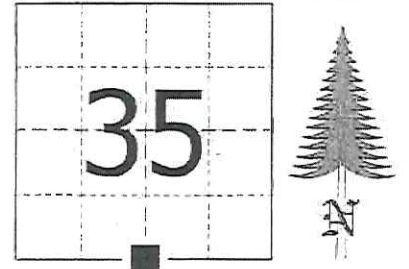


JACKSON COUNTY - U.S. PUBLIC LAND SURVEY MONUMENT RECORD

TYPE OF MONUMENT: 15" x 8" Sandstone
 REFERENCED FOR SURVEY RECORDED IN CSM# _____ OR CSR# _____
 SURVEYOR'S FILE# OR PROJECT# Fieldbook: T2ON-R1W, Pg. 8 - 9
 DRAWN BY: Ethan Remus
 WITNESS: Ethan Remus

CORNER VOL. 15, PAGE 2459
 CORNER# 22001350020 # 4
 SECTION 35, T 20 N, R 1W
 S1/4 CORNER ~~#12A~~

GEOGRAPHIC LOCATION: NAD 83 (91) WISCRS- Jackson County
 COUNTY COORDINATE SYSTEM
 (TO BE ASSIGNED BY COUNTY)
 LATT: 44°09'39.12176" N
 LONG: 90°27'57.26637" W
 N = 48538.4509
 E = 187887.1272



LOCATION
 (INDICATE W/ MONUMENT SYMBOL)

BASIS FOR MONUMENT LOCATION:

Please describe if this is a found, obliterated or lost corner. Give a complete history of the corner listing the vol & page, dates, surveyor and description of found monument. Please list all parole testimony and who provided it as well as other witness' of recovery. Please describe the best way to reach this corner. Indicate how obstructed this monument might be for GPS observations. Continue on backside if necessary.

* James Freeman set a post for the quarter corner as part of the original Township Line survey in 1845. He referenced two bearing trees, a 18" Pine N53°W - 50.82', and a 8" Pine N10°E - 11.22'.

* D.A. Blencoe was at this corner in 1944. He found a square painted oak post that was set by a local resident, who claimed it was at the true corner. Blencoe found a stump that fit Gov't calls to the NW bearing tree and signs of where the NE BT could have been. He noted that old fences ran N-S from this post. He set a pointed top hard iron sandstone 40" x 23" x 10" in a mound of earth with pits E-W. He referenced a 15" White Pine S33°W - 6.27'. He also notes the corner is 3 rods North of the top of slope. (CSR No. 1686 in Vol. 5 on Pg. 142-143)

* Bill Jung visited this corner in 1980. He found Blencoe's stone up 22" with pits E-W. He referenced it to three bearing trees. (See previous tie sheet)

* In November of 2015, I found a pointed top sandstone up 22" above a large mound of earth with large pits very plain E-W and a Monroe Co. witness sign about 2' NWly. I measured the stone to be 15" x 8" at its largest point above ground. I did not dig to measure the depth of stone. I can not explain the difference in the size of the stone as measured by Blencoe, but I firmly believe this to be his stone. Blencoe's bearing tree is gone, but I found all three of Jung's BT's still alive. I could not find the nail in his NW BT, I believe it may have pushed out. I did find nails in the other two BT's. I swung arcs off of these two nails to find the center of the stone as established by Jung. I then sawed a cross on top of the stone at this point. I drove a steel witness sign post 2' South and moved the Monroe Co. sign to 2' North. I drove four rebar for references as depicted below. I could not observe this corner with GPS due to canopy. I set GPS control in Al Olson's backyard to the NW and turned in. I accessed this corner through Al Olson's property to the NW, he has a little trail that runs almost to the corner.



CERTIFIED CORRECT AND COMPLETE TO THE BEST OF MY KNOWLEDGE AND BELIEF:

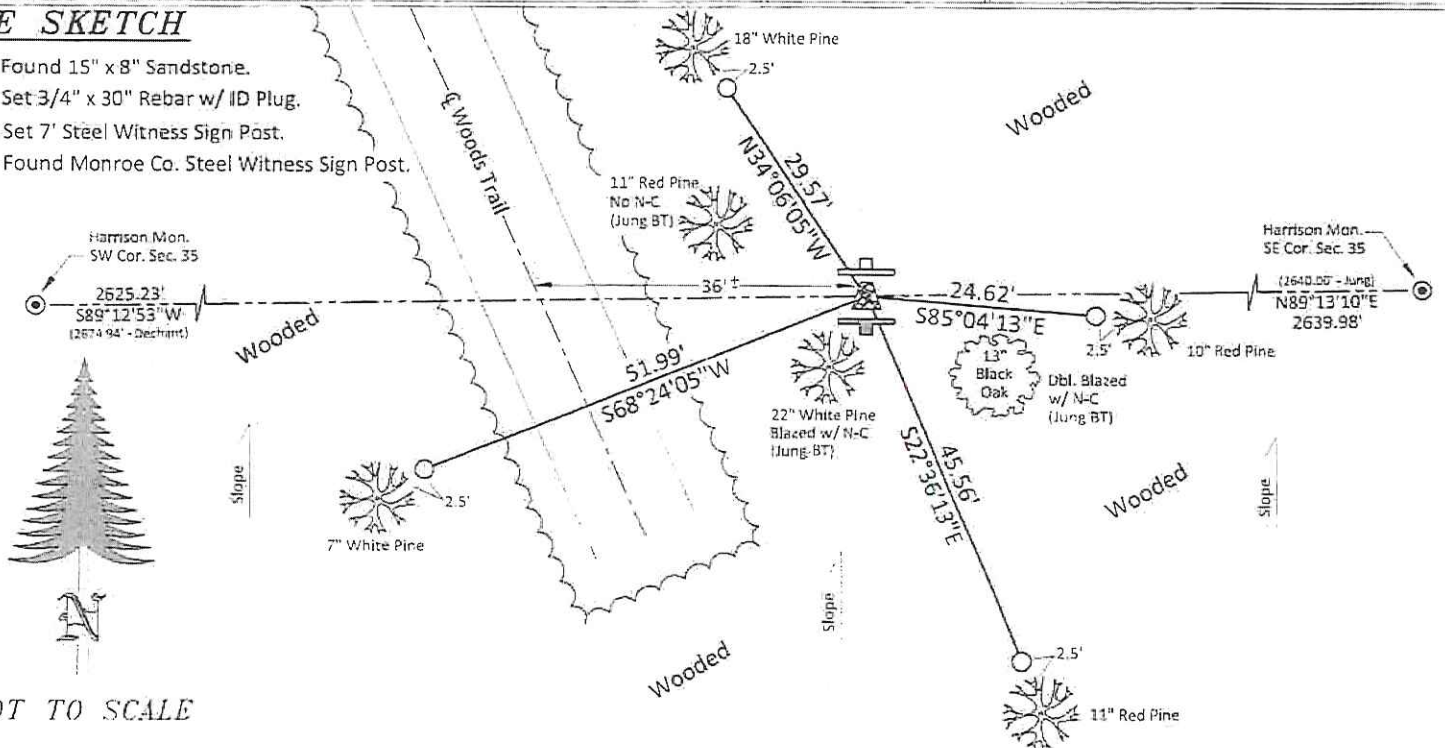
Ethan D. Remus

Professional Land Surveyor

DATE: March 17, 2016

TIE SKETCH

- = Found 15" x 8" Sandstone.
- = Set 3/4" x 30" Rebar w/ ID Plug.
- = Set 7' Steel Witness Sign Post.
- = Found Monroe Co. Steel Witness Sign Post.



NOT TO SCALE

I, William C. Jung, do hereby certify that on the 9th day of July 1980, I found (evidence) (~~no evidence~~) of the N¹/₄ corner of Section 2, T 19 N, R 1 W Fourth Principal Meridian, and I re-established said corner according to the Wisconsin Statutes as shown and described hereon.

Dated this 19th day of Jan. 1981.

William C. Jung

William C. Jung, R.L.S. 1323

History of corner establishment since Original Government Survey

Blencoe set a sandstone here in February of 1944.

Description of corner evidence found:

Found Blencoe' stone as described in his notes. Stone is up 22" with a pit 9' East and a pit 10' West.

Description of corner and witness monuments, references and accessories used to perpetuate the original or re-established location of this corner:

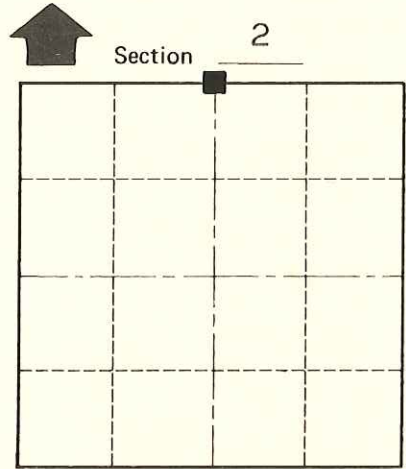
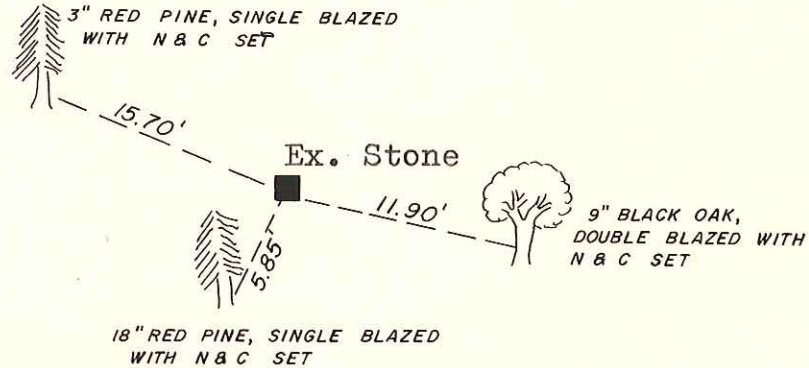
Witnesses to corner location:

W. Jung

G. Dechant

C. Dade

T. Tormoen



■ = LOCATION CORNER

T 19 N R 1 W

WISCONSIN

SIGN PLACED 2-12-80 H. Jensen

Approved: **HARLEY A. SIME**
MONROE CO. SURVEYOR

SURVEY CONTROL ORDER

Horizontal	_____
Vertical	_____

WISCONSIN COORDINATE SYSTEM

Corner	East (X)	North (Y)	Elevation (Z)	Zone
Control Sta. Name				

City, Village or Town Lincoln

County of Monroe

COUNTY SURVEYOR FORM NO. 1