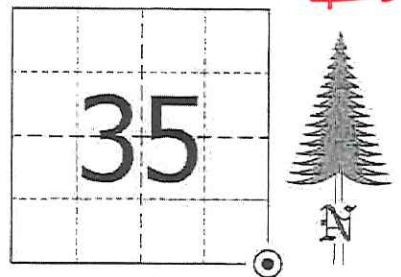


# JACKSON COUNTY - U.S. PUBLIC LAND SURVEY MONUMENT RECORD

TYPE OF MONUMENT: Cast Iron Harrison Monument  
 REFERENCED FOR SURVEY RECORDED IN CSM# \_\_\_\_\_ OR CSR# \_\_\_\_\_  
 SURVEYOR'S FILE# OR PROJECT# Fieldbook: T20N-R1W, Pg. 6 - 7  
 DRAWN BY: Ethan Remus  
 WITNESS: Ethan Remus

CORNER VOL. 15, PAGE 2458  
 CORNER# 22001350000 # 3  
 SECTION 35, T 20 N, R 1W  
 SE CORNER

GEOGRAPHIC LOCATION: NAD 83 (91) WISCRS- Jackson County  
 COUNTY COORDINATE SYSTEM  
 (TO BE ASSIGNED BY COUNTY)  
 LATT: 44°09'39.35540" N  
 LONG: 90°27'21.05456" W  
 N = 48574.4187  
 E = 190526.8615



LOCATION  
 (INDICATE W/ MONUMENT SYMBOL)

## BASIS FOR MONUMENT LOCATION:

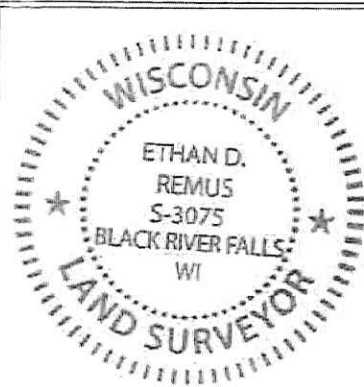
Please describe if this is a found, obliterated or lost corner. Give a complete history of the corner listing the vol & page, dates, surveyor and description of found monument. Please list all parable testimony and who provided it as well as other witness' of recovery. Please describe the best way to reach this corner. Indicate how obstructed this monument might be for GPS observations. Continue on backside if necessary.

\* James Freeman set a post for the section corner as part of the original Township Line survey in 1845. He referenced two bearing trees, a 14" Pine N80°W - 30.36', and a 12" Pine N82°W - 5.28'.

\* D.A. Blencoe surveyed in this area in 1944. He records this corner was set random, 40 chains East from the S1/4 Corner of Section 35. He set a stake in mound with a pit East and referenced it to a 8" Aspen N60°E - 3.30'. (CSR No. 1686 in Vol. 5 on Pg. 142 - 143)

\* Bill Jung visited this corner in 1980. He found no evidence of a monument here so he reestablished the corner by pushing the line between the SW and S1/4 Corners of Section 35, East 2640'. He set a cast iron Harrison monument in a mound of earth and dug pits E-W. He referenced it to three bearing trees. (See previous tie sheet)

\* In November of 2015, I found Jung's cast iron Harrison monument up 2" in a mound of earth with pit plain East. The Harrison was leaning East slightly. I found a Monroe Co. witness sign 6" SEly and a 3" O.D. steel gate post on the East side of the Harrison. I found no pit to the West, likely graded out for the trail. All three of Jung's bearing trees have been grubbed out. I accepted Jung's Harrison as the section corner. I plumbed it up and deepened the East pit, using the dirt to build up the mound and make the Harrison flush. I moved the Monroe Co. witness sign to 1' North and drove a 7' steel witness sign post 1' South. The steel gate post remains about 5" to the East. I drove four rebar for references as depicted below. The corner can be observed directly with GPS and can be easily accessed by driving dike roads across the Olson cranberry marsh.



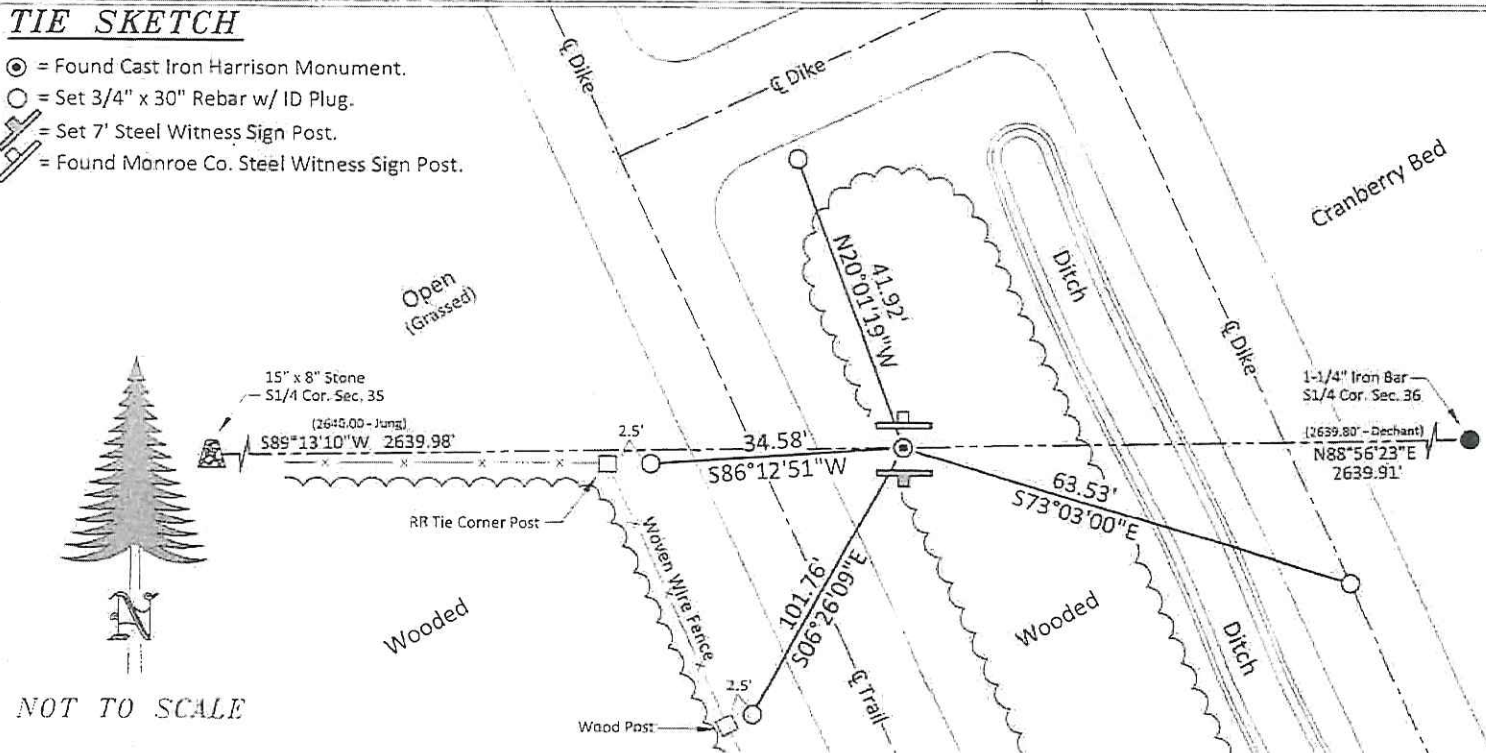
CERTIFIED CORRECT AND COMPLETE  
 TO THE BEST OF MY KNOWLEDGE  
 AND BELIEF:

*Ethan Remus*  
 Professional Land Surveyor

DATE: March 16, 2016

## TIE SKETCH

- ⊙ = Found Cast Iron Harrison Monument.
- = Set 3/4" x 30" Rebar w/ ID Plug.
- ⊥ = Set 7' Steel Witness Sign Post.
- ⊥ = Found Monroe Co. Steel Witness Sign Post.



NOT TO SCALE



I, William C. Jung, do hereby certify that on the 9th day of July 19 80, I found ~~(evidence)~~ (no evidence) of the NE corner of Section 2, T 19 N, R 1 W Fourth Principal Meridian, and I re-established said corner according to the Wisconsin Statutes as shown and described hereon.

Dated this 19th day of Jan. 19 81.

William C. Jung  
 William C. Jung, R.L.S. 1323  
 Title

**History of corner establishment since Original Government Survey**

Blencoe was here in February of 1944. He shows a small pit with stake.

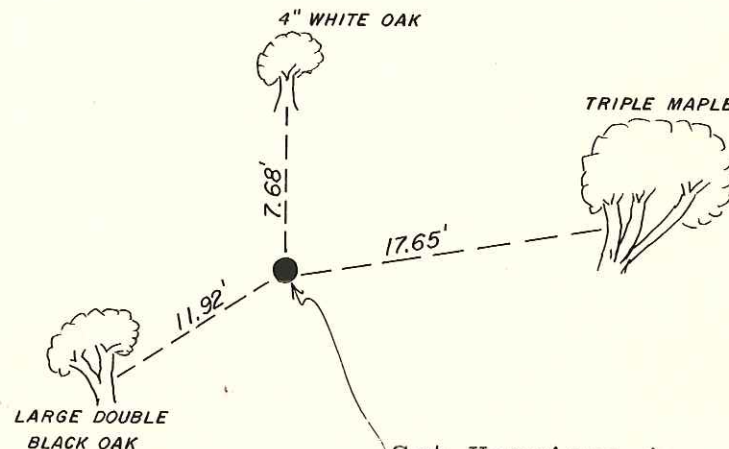
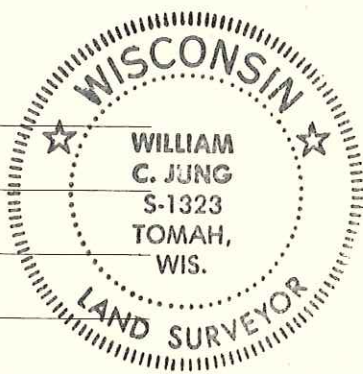
Description of corner evidence found:

Could not find Blencoe's pit. Set a Harrison at Blencoe's given distance from the N $\frac{1}{4}$  corner of Section 2 and projected a straight line through the NW and N $\frac{1}{4}$  corners of Section 2.

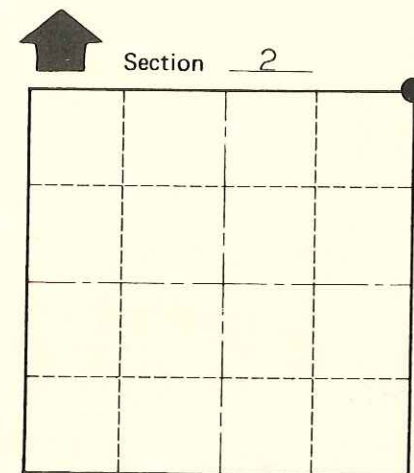
Description of corner and witness monuments, references and accessories used to perpetuate the original or re-established location of this corner:

Witnesses to corner location:

W. Jung  
G. Dechant  
C. Dade



Set Harrison in small mound of dirt. Pits 3 $\frac{1}{2}$ ' East & West.



O = LOCATION CORNER

T 19 N R 1 W  
 WISCONSIN

**Approved: HARLEY A. SIME  
 MONROE CO. SURVEYOR**

SURVEY CONTROL ORDER

Horizontal	_____
Vertical	_____

(All trees are double blazed with N&C's set)

WISCONSIN COORDINATE SYSTEM

Corner	East (X)	North (Y)	Elevation (Z)	Zone
Control Sta. Name				

**SIGN PLACED** 2-12-90 H. Sime

City, Village or Town Lincoln  
 County of Monroe

COUNTY SURVEYOR FORM NO. 1