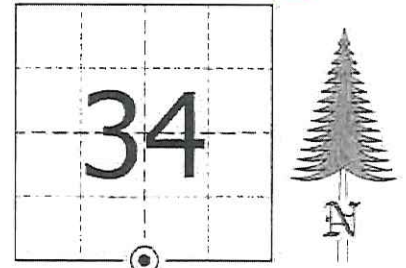


JACKSON COUNTY - U.S. PUBLIC LAND SURVEY MONUMENT RECORD

TYPE OF MONUMENT: Cast Iron Harrison Monument
 REFERENCED FOR SURVEY RECORDED IN CSM# _____ OR CSR# _____
 SURVEYOR'S FILE# OR PROJECT# Fieldbook: T20N-R1W, Pg. 12 - 13
 DRAWN BY: Ethan Remus
 WITNESS: Ethan Remus

CORNER VOL. 15, PAGE 2461
 CORNER# 22001340020
 SECTION 34, T 20 N, R 1W #6
 S1/4 CORNER ~~1226~~

GEOGRAPHIC LOCATION: NAD 83 (91) WISCRS- Jackson County
 COUNTY COORDINATE SYSTEM
 (TO BE ASSIGNED BY COUNTY)
 LATT: 44°09'38.74301" N
 LONG: 90°29'09.48465" W
 N = 48476.5146
 E = 182622.5702



LOCATION
 (INDICATE W/ MONUMENT SYMBOL)

BASIS FOR MONUMENT LOCATION:

Please describe if this is a found, obliterated or lost corner. Give a complete history of the corner listing the vol. & page, dates, surveyor and description of found monument. Please list all parole testimony and who provided it as well as other witness of recovery. Please describe the best way to reach this corner. Indicate how obstructed this monument might be for GPS observations. Continue on backside if necessary.

* James Freeman set a post for the quarter corner as part of the original Township Line survey in 1845. He referenced two bearing trees, a 24" Pine N14°W - 36.96', and a 14" Pine N71°E - 21.12'.

* I have found no record, in Jackson or Monroe Counties, of anyone using this corner between 1845 and 1978.

* Harley Sime reestablished this corner in 1978. He set a Harrison monument, up 3" at a "computed location" and referenced it to four bearing trees. He notes the corner is about 130' South of a rock ledge and 5' East of a downed N-S fenceline. (See previous tie sheet)

* Sime's Harrison has been accepted and used as the corner by many surveyors over the years.

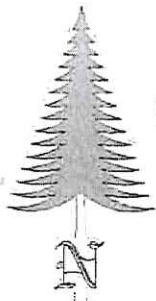
* In December of 2015, I found Sime's Harrison monument in good condition, up 3" above ground on the South slope of a ridge. There was a steel T-Post driven on the SEly side of the Harrison. This T-Post is the corner of a newer barbed wire fence running Ely and Sly from the Harrison. I found old downed barbed wire running N-S about 5' West of the Harrison. I found all four of Sime's bearing trees still alive as depicted below. I accepted Sime's Harrison as the quarter corner, drove a steel witness sign post 1' South, and drove four rebar for references as depicted below. Direct GPS observations on this corner are possible under ideal conditions. The best way to access this corner is to walk due South from Olson Rd, about 306'.

CERTIFIED CORRECT AND COMPLETE
 TO THE BEST OF MY KNOWLEDGE
 AND BELIEF:
 [Signature]
 Professional Land Surveyor
 DATE: March 17, 2016

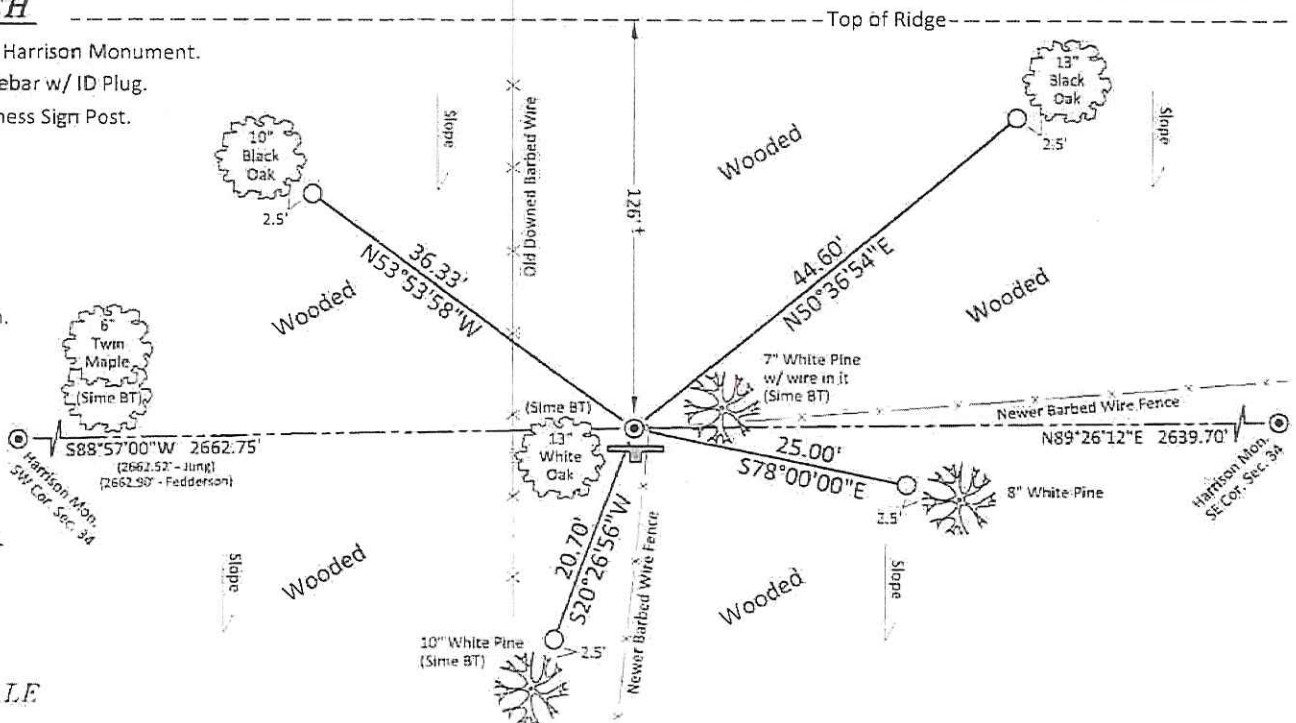
TIE SKETCH

- ⊙ = Found Cast Iron Harrison Monument.
- = Set 3/4" x 30" Rebar w/ ID Plug.
- ⚡ = Set 7" Steel Witness Sign Post.

*Bearings are referenced to magnetic North.



NOT TO SCALE



CERTIFICATE

CERTIFIED LAND CORNER

No. 6

I, Harley A. Sime, do hereby certify that on the 13th day of June 1978, I found ~~(evidence)~~ (no evidence) of the N $\frac{1}{4}$ corner of Section 3, T 19 N, R 1 W Fourth Principal Meridian, and I re-established said corner according to the Wisconsin Statutes as shown and described hereon.

Dated this 11th day of Jan. 1979.

Harley A. Sime, R.L.S. 355
County Surveyor
Title

History of original corner establishment:

No known recorded history since the original government survey.

Description of corner evidence found:

Set the corner a computed location after surveying out Section 34-T20N-R1W.

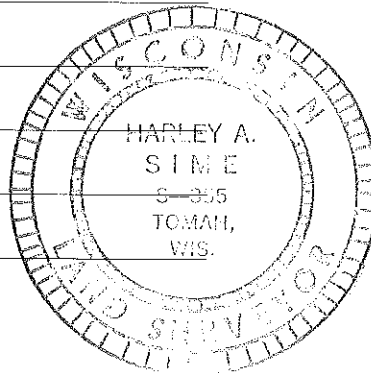
Description of corner and witness monuments, references and accessories used to perpetuate the original or re-established location of this corner:

Set Harrison Marker, up 3", 130'± South of a rock ledge.

Witnesses to corner location:

G. Dechant-Crew Chief

B. Meyer



Double Maple

48.55'

10" White Oak

down broken wire

5'

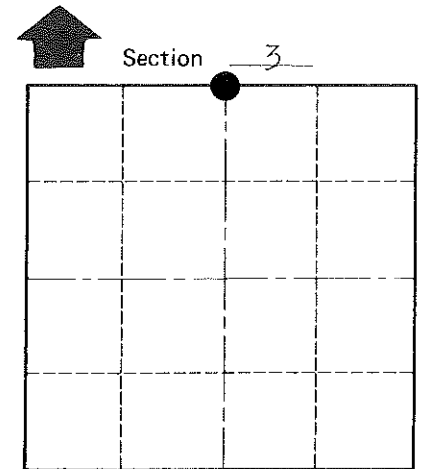
3.65'

23.55'

5" White Pine

5.55' 3" White Pine

Harrison



T 19 N R 1 W

WISCONSIN

(All trees double blazed and with N&C'S set, except no N&C in Oak)

SURVEY CONTROL ORDER

Horizontal	_____
Vertical	_____

WISCONSIN COORDINATE SYSTEM

Corner	East (X)	North (Y)	Elevation (Z)	Zone
Control Sta. Name				

City, Village or Town Lincoln

County of Monroe

COUNTY SURVEYOR FORM NO. 1