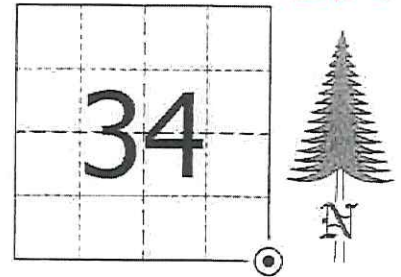


JACKSON COUNTY - U.S. PUBLIC LAND SURVEY MONUMENT RECORD

TYPE OF MONUMENT: Cast Iron Harrison Monument
 REFERENCED FOR SURVEY RECORDED IN CSM# _____ OR CSR# _____
 SURVEYOR'S FILE# OR PROJECT# Fieldbook: T20N-R1W, Pg. 10 - 11
 DRAWN BY: Ethan Remus
 WITNESS: Ethan Remus

CORNER VOL. 15, PAGE 2460
 CORNER# 22001340000 # 5
 SECTION 34, T 20 N, R 1 W
 SE CORNER ~~#125~~

GEOGRAPHIC LOCATION: NAD 83 (91) WISCRS- Jackson County
 COUNTY COORDINATE SYSTEM
 (TO BE ASSIGNED BY COUNTY)
 LATT: 44°09'38.88416" N
 LONG: 90°28'33.27581" W
 N = 48502.4711
 E = 185262.1412



LOCATION
(INDICATE W/ MONUMENT SYMBOL)

BASIS FOR MONUMENT LOCATION:

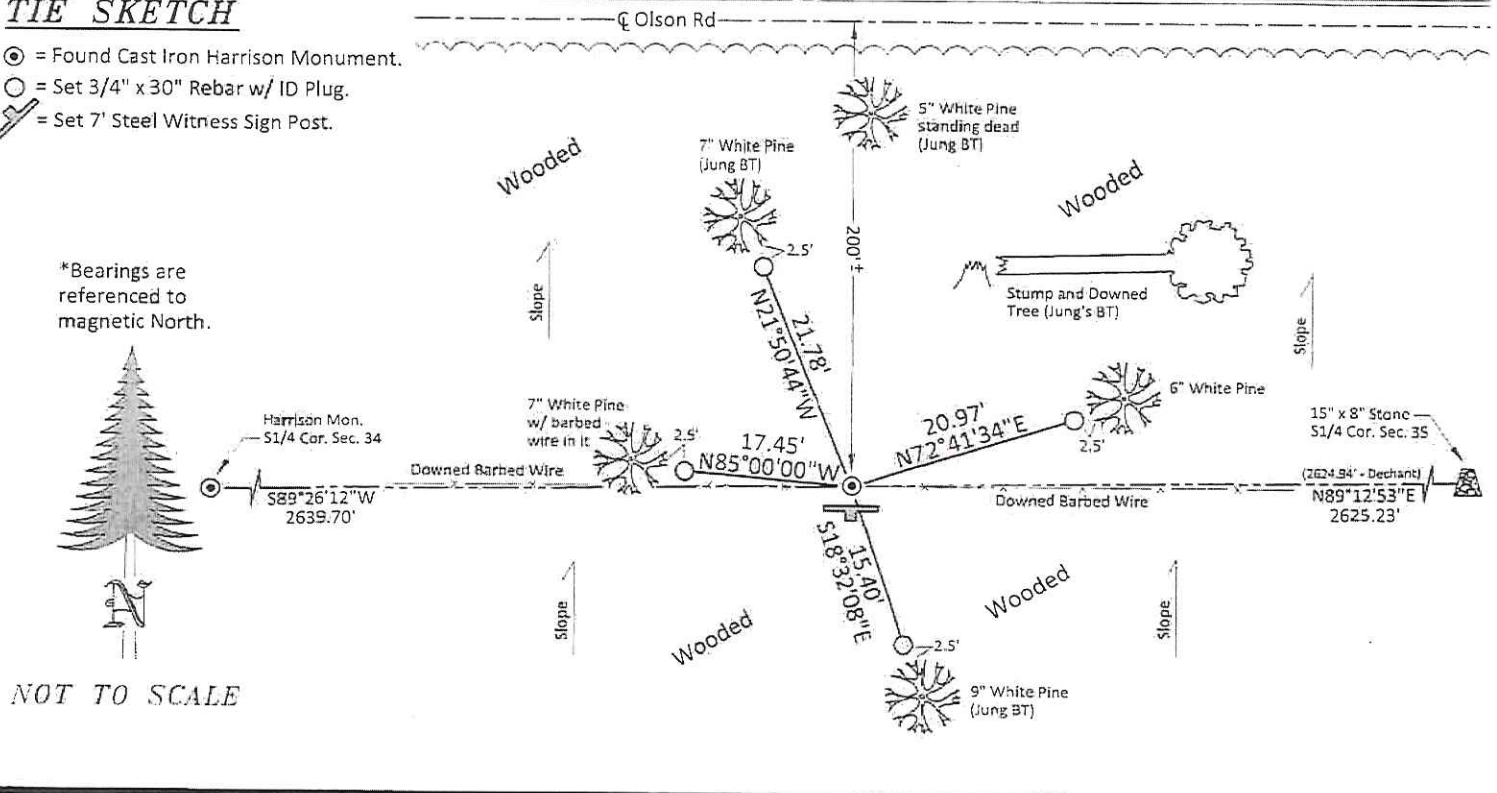
Please describe if this is a found, obliterated or lost corner. Give a complete history of the corner listing the vol & page, dates, surveyor and description of found monument. Please list all parable testimony and who provided it as well as other witness' of recovery. Please describe the best way to reach this corner. Indicate how obstructed this monument might be for GPS observations. Continue on backside if necessary.

- * James Freeman set a post for the section corner as part of the original Township Line survey in 1845. He referenced two bearing trees, a 18" Pine N37°W - 28.38', and a 12" Pine N78°E - 8.58'.
- * I have found no record, in Jackson or Monroe Counties, of anyone using this corner between 1845 and 1979.
- * Bill Jung reestablished this corner in 1979. He pushed the East line of Section 3 North to the intersection of a downed E-W fenceline. He set a cast iron Harrison monument at the corner and referenced it to four bearing trees. (See previous tie sheet)
- * In December of 2015, I found Jung's Harrison monument in good condition, up 2" above ground on the North slope of a ridge. There was a steel T-Post driven on the North side of the Harrison. I found downed barbed wire all around the corner, running E-W. I found Jung's four bearing trees as depicted below. I accepted Jung's Harrison as the section corner, drove a 7' steel witness sign post 1' South, and drove four rebar for references as depicted below. I could not observe this corner with GPS, even with the leaves off. I set GPS control along Olson Rd, to the North, and turned in. The corner is located about 200' South of the road.

CERTIFIED CORRECT AND COMPLETE
 TO THE BEST OF MY KNOWLEDGE
 AND BELIEF:
Ethan D. Remus
 Professional Land Surveyor
 DATE: March 17, 2016

TIE SKETCH

- ⊙ = Found Cast Iron Harrison Monument.
- = Set 3/4" x 30" Rebar w/ ID Plug.
- ⚡ = Set 7' Steel Witness Sign Post.



I, William C. Jung, do hereby certify that on the 26th day of March 19 79, I found evidence ~~(no evidence)~~ of the NE corner of Section 3, T 19 N, R 1 W Fourth Principal Meridian, and I re-established said corner according to the Wisconsin Statutes as shown and described hereon.

Dated this 29th day of March 1979.

William C. Jung, R.L.S. 1323

County Surveyor's Office

William C. Jung

History of corner establishment since Original Government Survey

No known recorded history since the original government survey.

Description of corner evidence found:

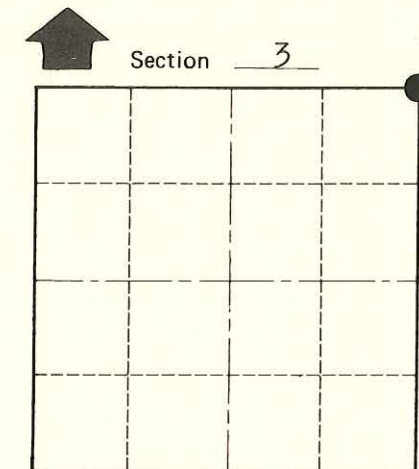
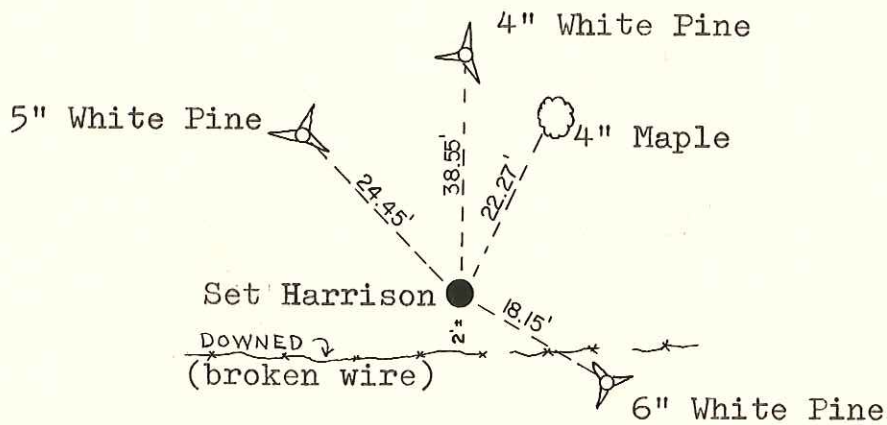
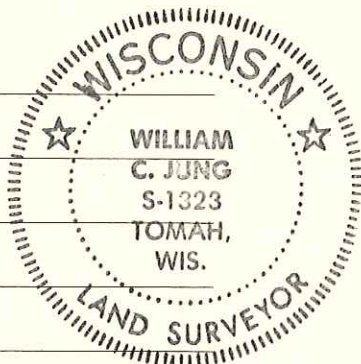
Intersected E-W fence with computed east line of Section 3 after surveying out Section 3-T19N-R1W and Section 34-T20N-R1W.

Description of corner and witness monuments, references and accessories used to perpetuate the original or re-established location of this corner:

Witnesses to corner location:

G. Dechant

C. Pietz



● = LOCATION CORNER

T 19 N R 1 W

WISCONSIN

(All trees are double blazed with N&C's set)

SURVEY CONTROL ORDER

Horizontal	_____
Vertical	_____

Approved by: Harley A. Sime
County Surveyor

WISCONSIN COORDINATE SYSTEM

Corner	East (X)	North (Y)	Elevation (Z)	Zone
Control Sta. Name				

City, Village or Town Lincoln

County of Monroe

COUNTY SURVEYOR FORM NO. 1