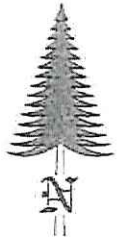
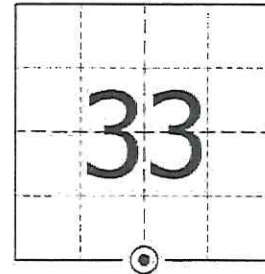


JACKSON COUNTY - U.S. PUBLIC LAND SURVEY MONUMENT RECORD

TYPE OF MONUMENT: Cast Iron Harrison Monument
 REFERENCED FOR SURVEY RECORDED IN CSM# _____ OR CSR# _____
 SURVEYOR'S FILE# OR PROJECT# Fieldbook: T20N-R1W, Pg. 16 - 17
 DRAWN BY: Ethan Remus
 WITNESS: Ethan Remus

CORNER VOL. 10, PAGE 1637
 CORNER# 22001330020
 SECTION 33, T 20 N, R 1W # 8
 S1/4 CORNER

GEOGRAPHIC LOCATION: NAD 83 (91) WISCRS- Jackson County
 COUNTY COORDINATE SYSTEM
 (TO BE ASSIGNED BY COUNTY)
 LATT: 44°09'38.17182" N
 LONG: 90°30'22.15799" W
 N = 48396.2388
 E = 177324.9016



LOCATION
 (INDICATE W/ MONUMENT SYMBOL)

BASIS FOR MONUMENT LOCATION:

Please describe if this is a found, obliterated or lost corner. Give a complete history of the corner listing the vol & page, dates, surveyor and description of found monument. Please list all parole testimony and who provided it as well as other witness of recovery. Please describe the best way to reach this corner. Indicate how obstructed this monument might be for GPS observations. Continue on backside if necessary.

* James Freeman set a post for the quarter corner as part of the original Township Line survey in 1845. He referenced two bearing trees, a 10" White Oak N66°W - 12.54', and a 18" Pine N41°E - 41.58'.

* I have found no record, in Jackson or Monroe Counties, of anyone using this corner between 1845 and 1972.

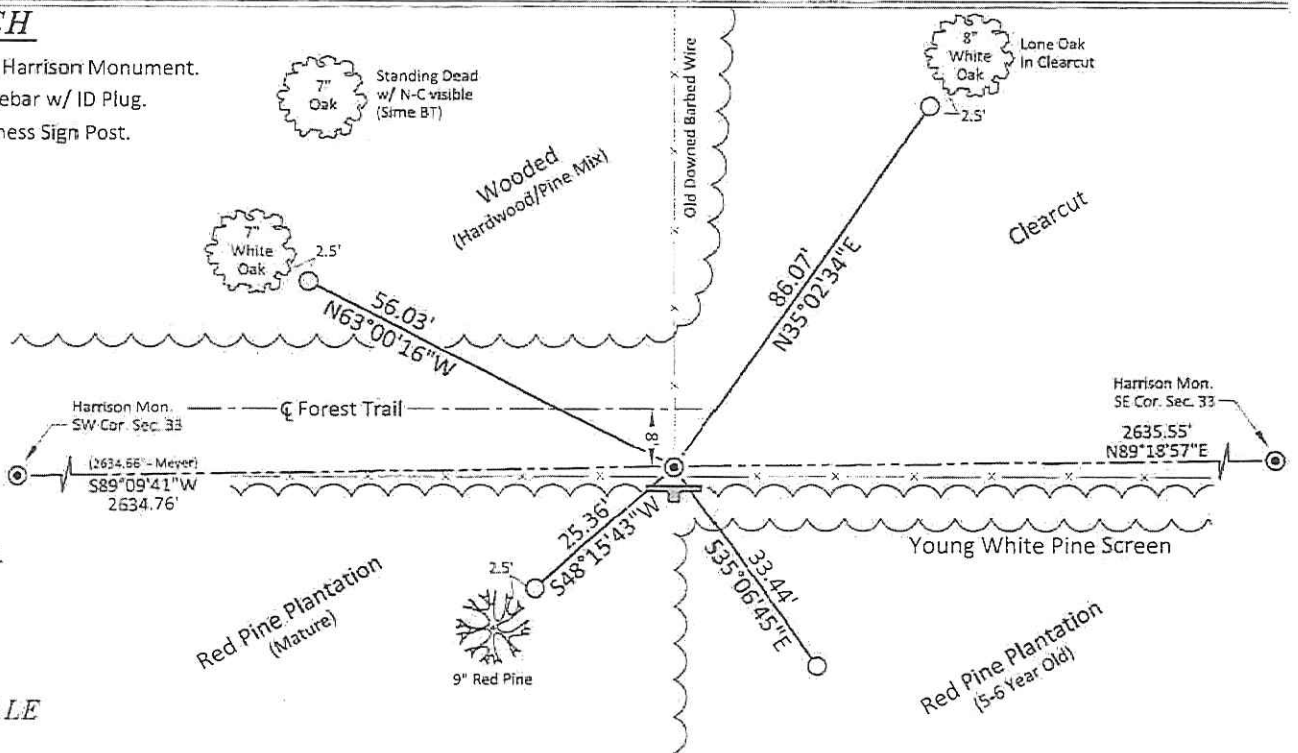
* Harley Sime reestablished this corner in 1972. He found an old downed fence line running E-W-N. He notes the fence intersection fit the Town line very well, so he accepted it as the best evidence of the corner. He set a Harrison monument for the corner and referenced it to three bearing trees. (See previous tie sheet)

* In December of 2015, I found Sime's Harrison monument in good condition, flush with the ground at the intersection of downed barbed wire running E-W-N. There was a steel T-Post about 7" East of the Harrison. I found Sime's Wly bearing tree standing dead. I'm not sure about his NW BT. I found an oak that fit distance, but there was no sign of a blaze or a nail, and without a compass bearing I could not confirm. Sime's NE BT would be logged off. I did not look for the stump since he gave no bearing to it, and the clearcut was quite thick. I accepted the Harrison as the quarter corner and drove a 7' steel witness sign post 1' South. I drove four rebar for references as depicted below. The corner is open for GPS and can be accessed from the E-SE across private lands.

CERTIFIED CORRECT AND COMPLETE TO THE BEST OF MY KNOWLEDGE AND BELIEF:
Ethan Remus
 Professional Land Surveyor
 DATE: March 18, 2016

TIE SKETCH

- ⊙ = Found Cast Iron Harrison Monument.
- = Set 3/4" x 30" Rebar w/ ID Plug.
- 🚧 = Set 7' Steel Witness Sign Post.



NOT TO SCALE

I, Harley A. Sime, do hereby certify that on the 16th day of June 1972, I found ~~(evidence)~~ (no evidence) of the North 1/4 corner of Section 4, T 19 N, R 1 W, Fourth Principal Meridian, and I re-established said corner according to the Wisconsin Statutes as shown and described hereon.

History of original corner establishment:

Description of corner evidence found:

Dated this 1st day of March 1976.

Accepted a 3-way fence as the best available evidence. Said corner fits the Town Line very well.

~~County Surveyor~~ **Approved: HARLEY A. SIME**
MONROE CO. SURVEYOR

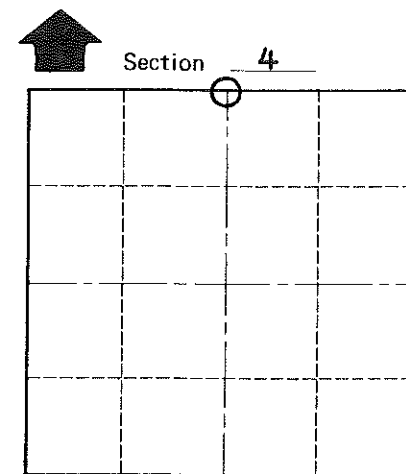
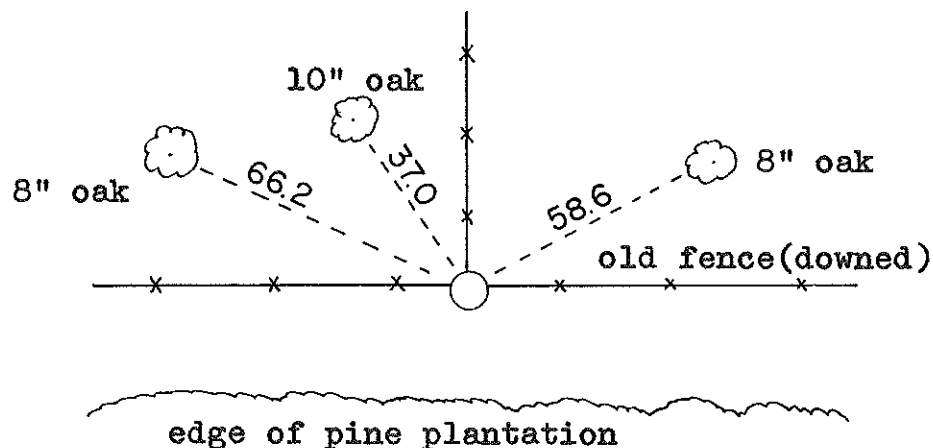
COUNTY SURVEYOR FORM NO. 1

Description of corner and witness monuments, references and accessories used to perpetuate the original or re-established location of this corner:

Set a Harrison marker in the fence corner.

Witnesses to corner location:

Duane Marten-Crew Chief



T 19 N R 1 W
WISCONSIN

Note: All trees have nails and caps in them.

SURVEY CONTROL ORDER

Horizontal	_____
Vertical	_____

WISCONSIN COORDINATE SYSTEM

Corner	East (X)	North (Y)	Elevation (Z)	Zone
Control Sta. Name				

City, Village or Town Lincoln
 County of Monroe