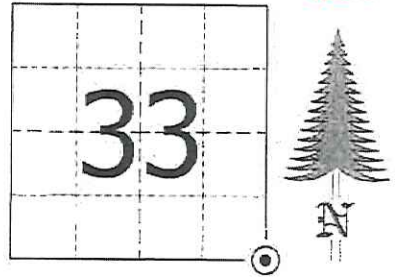


JACKSON COUNTY - U.S. PUBLIC LAND SURVEY MONUMENT RECORD

TYPE OF MONUMENT: Cast Iron Harrison Monument
 REFERENCED FOR SURVEY RECORDED IN CSM# _____ OR CSR# _____
 SURVEYOR'S FILE# OR PROJECT# Fieldbook: T20N-R1W, Pg. 14 - 15
 DRAWN BY: Ethan Remus
 WITNESS: Ethan Remus

CORNER VOL. 15, PAGE 2462
 CORNER# 22001330000
 SECTION 33, T 20 N, R 1W #7
 SE CORNER # ~~133~~

GEOGRAPHIC LOCATION: NAD 83 (91) WISCRS- Jackson County
 COUNTY COORDINATE SYSTEM
 (TO BE ASSIGNED BY COUNTY)
 LATT: 44°09'38.37405" N
 LONG: 90°29'46.00664" W
 N = 48427.7148
 E = 179960.2656



LOCATION
 (INDICATE W/ MONUMENT SYMBOL)

BASIS FOR MONUMENT LOCATION:

Please describe if this is a found, obliterated or lost corner. Give a complete history of the corner listing the vol. & page, dates, surveyor and description of found monument. Please list all parole testimony and who provided it as well as other witness' of recovery. Please describe the best way to reach this corner. Indicate how obstructed this monument might be for GPS observations. Continue on backside if necessary.

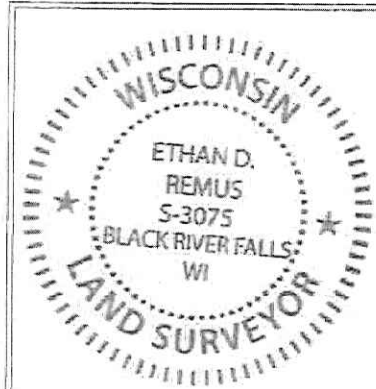
* James Freeman set a post for the section corner as part of the original Township Line survey in 1845. He referenced two bearing trees, a 18" Pine N26°E, and a White Oak N74°W - 287.76'.

* I have found no record, in Jackson or Monroe Counties, of anyone using this corner between 1845 and 1978.

* Bill Jung visited this corner in 1978. He found a 1-1/4" iron pipe down 8" in the South road shoulder. He notes this pipe was set by Harley Sime in 1964 and used by Duane Marten in 1972. Jung accepted this pipe as the quarter corner and replaced it with a Harrison monument. He established four references to the corner. (See previous tie sheet)

* Gary Dechant visited this corner in 1987. He removed the existing Harrison monument for upcoming road construction. After construction, he reset the Harrison from three existing references and drove a 3/4" iron bar to the SW for an additional reference. (See previous tie sheet)

* In December of 2015, I found Sime's Harrison monument in good condition, down 6" below ground on the South side of a town road. I found two pieces of angle iron, likely set as guard stakes, on the SW edge of the Harrison. I found Dechant's SW and NW references in good condition. I accepted the Harrison as the section corner and drove a steel witness sign post 1' West. I retied the existing references to the SW and NW. I also tied in a 3/4" iron bar to the East, set by Tim Jeatran in CSR No. 1816. I drove two additional rebar for references as depicted below. The corner is open for GPS.



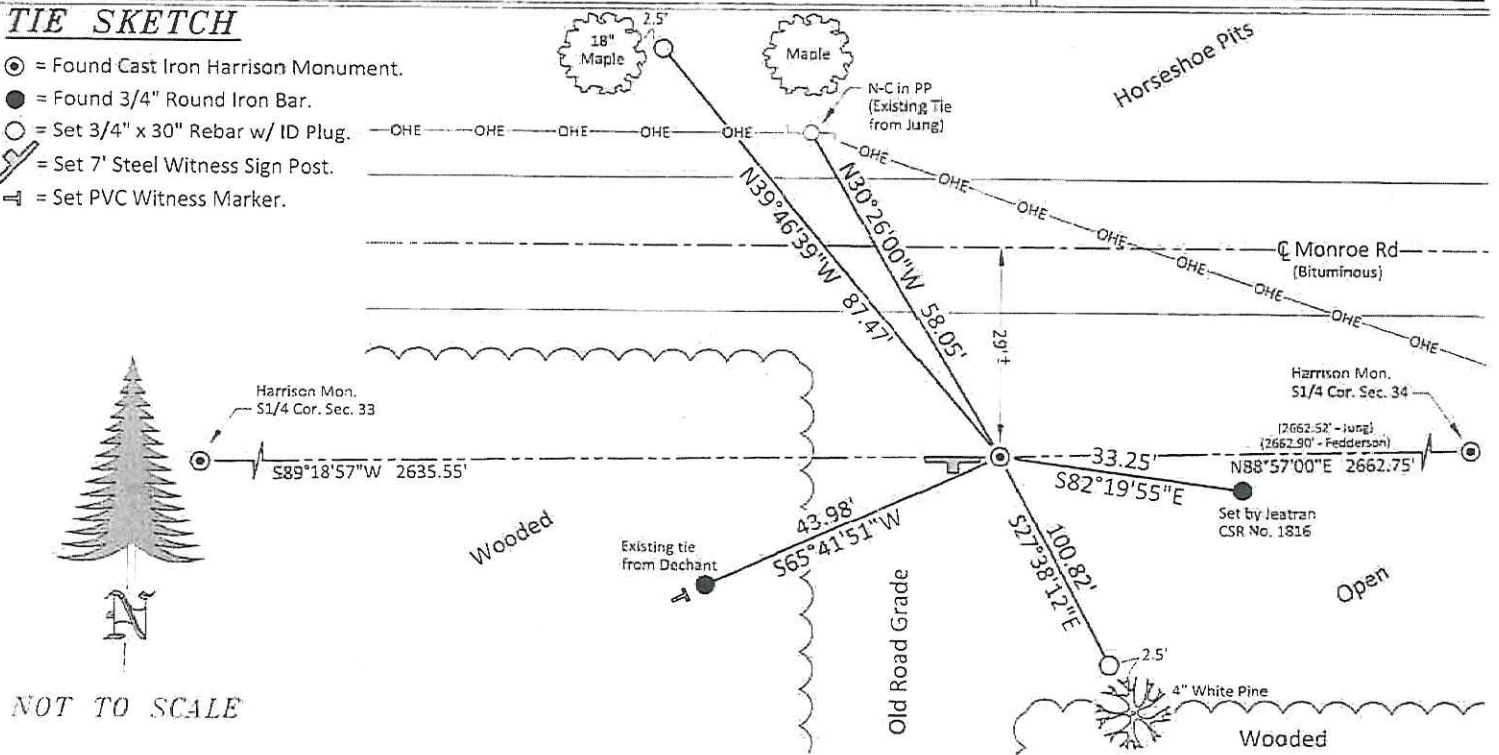
CERTIFIED CORRECT AND COMPLETE
 TO THE BEST OF MY KNOWLEDGE
 AND BELIEF:

Ethan Remus
 Professional Land Surveyor

DATE: March 17, 2016

TIE SKETCH

- ⊙ = Found Cast Iron Harrison Monument.
- = Found 3/4" Round Iron Bar.
- = Set 3/4" x 30" Rebar w/ ID Plug.
- ⚡ = Set 7' Steel Witness Sign Post.
- ⇨ = Set PVC Witness Marker.



NOT TO SCALE

I, Gary L. Dechant, do hereby certify that on the 28th day of October 19 87, I found (evidence) ~~(evidence)~~ of the NE corner of Section 4, T19 N, R 1 W Fourth Principal Meridian, and I re-established said corner according to the Wisconsin Statutes as shown and described hereon.

Dated this 3rd day of Nov. 19 87.

Gary L. Dechant
Registered Land Surveyor, 1744
Title

History of corner establishment since Original Government Survey

(PAGE 2)

Description of corner evidence found:

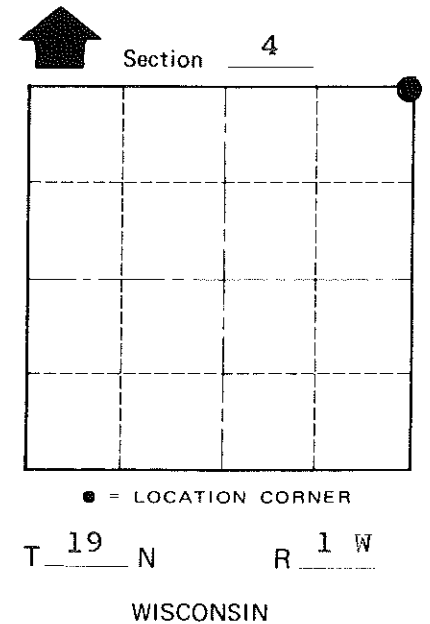
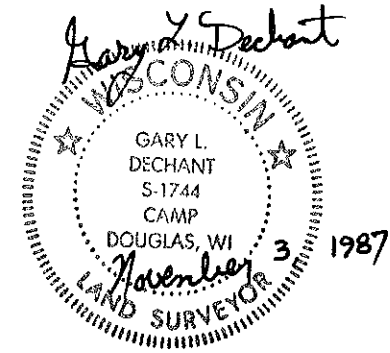
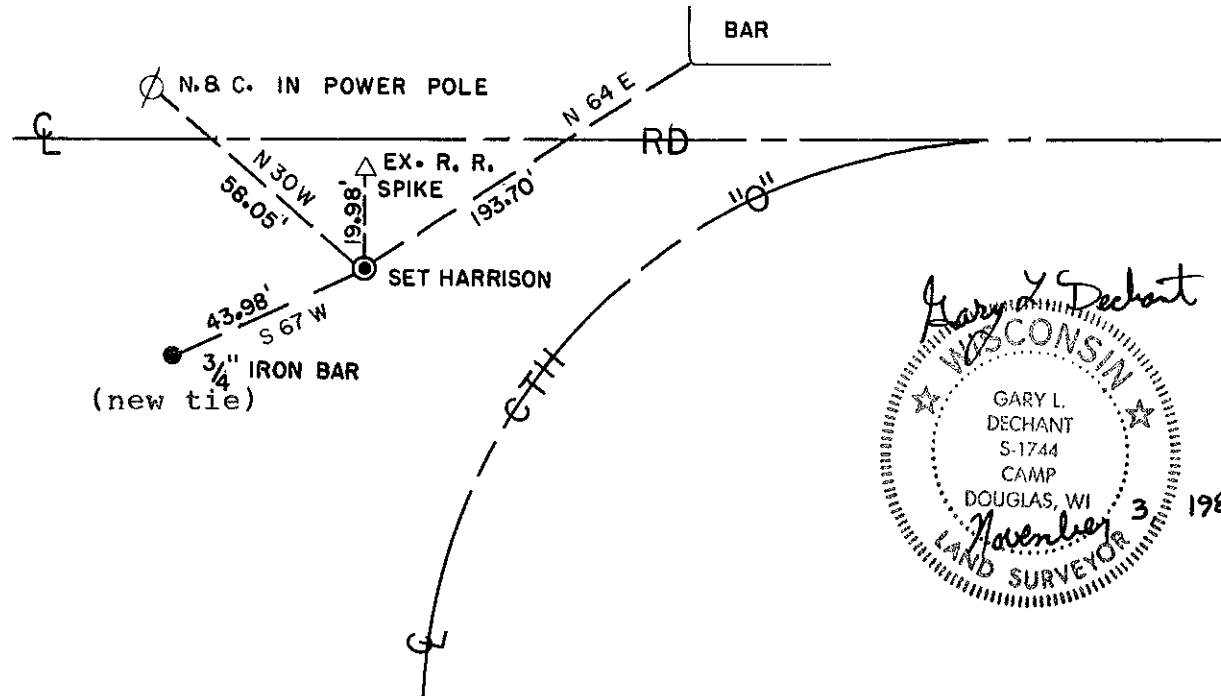
George Baker, Monroe County Highway Commissioner, contacted our office and asked us to remove the Harrison Marker at this corner. because road repair was needed here. After road repair was completed, reset corner from existing ties of January 1978 survey.

Description of corner and witness monuments, references and accessories used to perpetuate the original or re-established location of this corner:

Witnesses to corner location:

David E. Madison

Timothy S. Frederick



COUNTY SURVEYOR FORM NO. 1

SURVEY CONTROL ORDER

Horizontal	_____
Vertical	_____

WISCONSIN COORDINATE SYSTEM

Corner	East (X)	North (Y)	Elevation (Z)	Zone
Control Sta. Name				

City, Village or Town Lincoln
County of Monroe

CERTIFICATE

CERTIFIED LAND CORNER

No. 7

I, William C. Jung, do hereby certify that on the 6th day of January 1978, I found (evidence) (~~no evidence~~) of the NE corner of Section 4, T 19 N, R 1 W Fourth Principal Meridian, and I re-established said corner according to the Wisconsin Statutes as shown and described hereon.

History of original corner establishment:

Dated this 10th day of Jan. 1978.

Description of corner evidence found:

William C. Jung, R.L.S. 1323

Found a pipe set by Harley Sime in July of 1964. Duane Marten also used this pipe in June of 1972. This pipe fits the existing evidence along the North line of Section 4 very well.

Crew Chief, County Surveyor's
Title Office

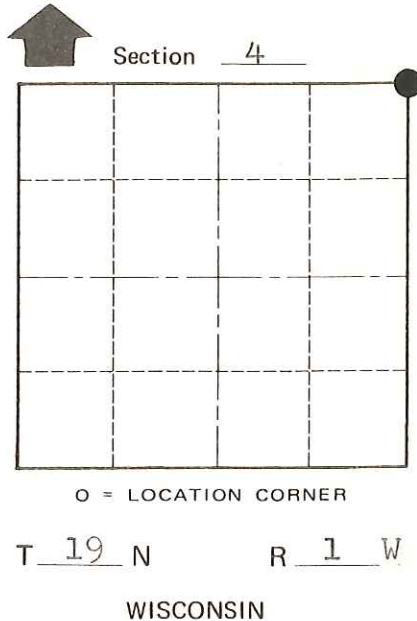
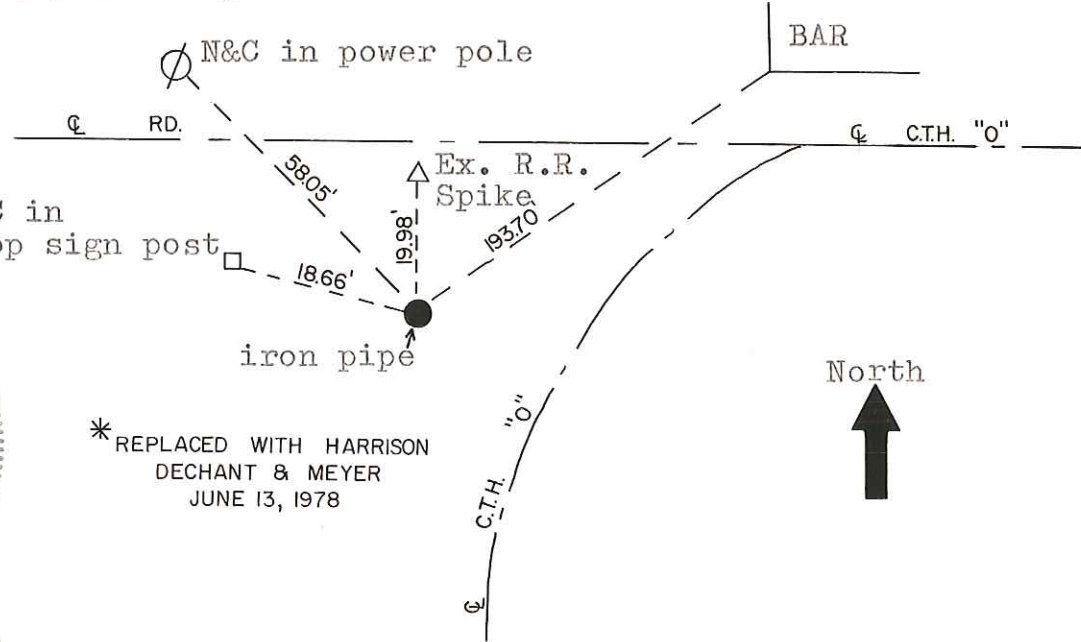
Description of corner and witness monuments, references and accessories used to perpetuate the original or re-established location of this corner:

Found 1 1/4" iron pipe, down 8" on left shoulder of road.

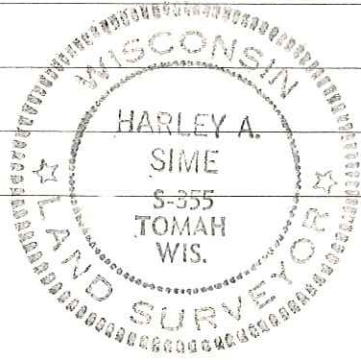
Witnesses to corner location:

W. Jung

G. Dechant



COUNTY SURVEYOR FORM NO. 1



Approved: Harley A. Sime
County Surveyor

SURVEY CONTROL ORDER

Horizontal	_____
Vertical	_____

WISCONSIN COORDINATE SYSTEM

Corner	East (X)	North (Y)	Elevation (Z)	Zone
Control Sta. Name				

City, Village or Town Lincoln

County of Monroe

O.K.