

# U.S. PUBLIC LAND SURVEY MONUMENT RECORD MONROE COUNTY, WISCONSIN.

IN ACCORDANCE WITH WISCONSIN ADMINISTRATIVE CODE, CHAPTER A-E 7.08 (3) (A) - (I)

## LOCATION:

SECTION 10 - TOWN 19N - RANGE 1W EAST

TOWNSHIP OF: Lincoln

TYPE OF CORNER: North 1/4 Corner

TYPE OF MONUMENT: Harrison (broken off 3 1/2" down)

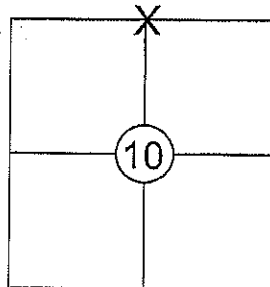
HORIZONTAL DATUM: WCCS Monroe (NAD83/2011)

NORTHING / LATITUDE: 453307.75

EASTING / LONGITUDE: 711758.87

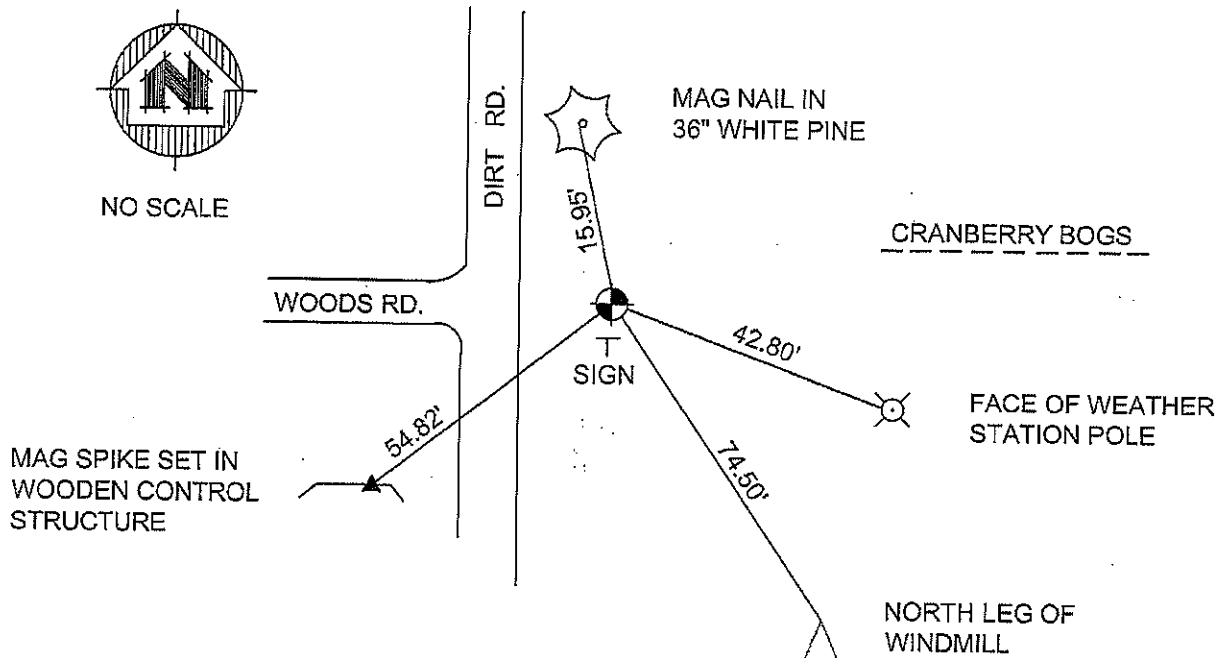
VERTICAL DATUM: -

ELEVATION: -



## PLAN VIEW

(C) Reference to at least 4 witness monuments. witness monuments shall be concrete, natural stone, iron, bearing trees or other equally durable material, except wood other than bearing trees; (D) A plan view depicting the relevant monuments and reference ties which are sufficient in detail to enable accurate relocation of the corner monument if the corner monument is disturbed; (E) A description of any material discrepancy between the location of the corner as restored or reestablished and the location of that corner as previously restored or reestablished;



## SURVEYOR'S CERTIFICATE: CHAPTER 7.08 (3) (I)

The undersigned hereby certifies that the u.s. public land survey monument record shown was determined by them or under their direction and is correct to the best of their knowledge and belief.



*Kerry R. Zimmerman*  
Kerry R. Zimmerman  
Wisconsin Professional Land Surveyor #1625

1-19-2015  
Date

21901030020

I, Harley A. Sime, do hereby certify that on the 3rd day of October 19 75, I found ~~(evidence)~~ (no evidence) of the North 1/4 corner of Section 10, T19 N, R 1 W Fourth Principal Meridian, and I re-established said corner according to the Wisconsin Statutes as shown and described hereon.

History of original corner establishment:

Approved: **HARLEY A. SIME**  
**MONROE CO., SURVEYOR**

Description of corner evidence found:

Set the corner on line with the existing fence to the North and on a bearing from the Northeast corner of Section 10 in variation from the bearing of the South line of the section, equivalent to that as shown in the original government notes. This also fits existing conditions found in the S1/2-S1/2 of Section 3.

Dated this 1st day of March 1976.

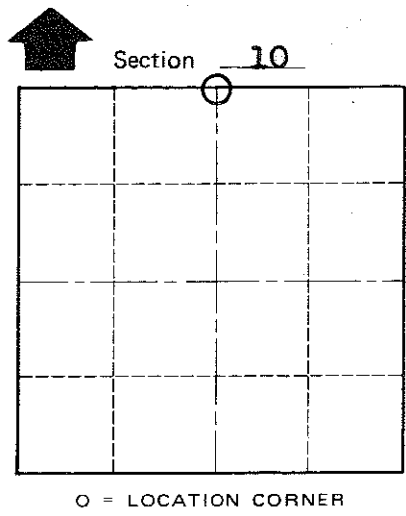
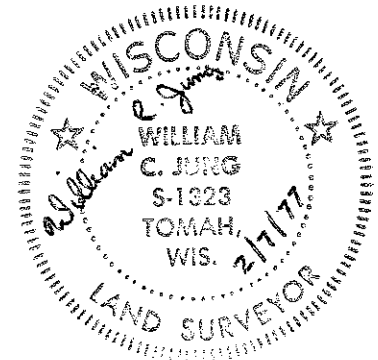
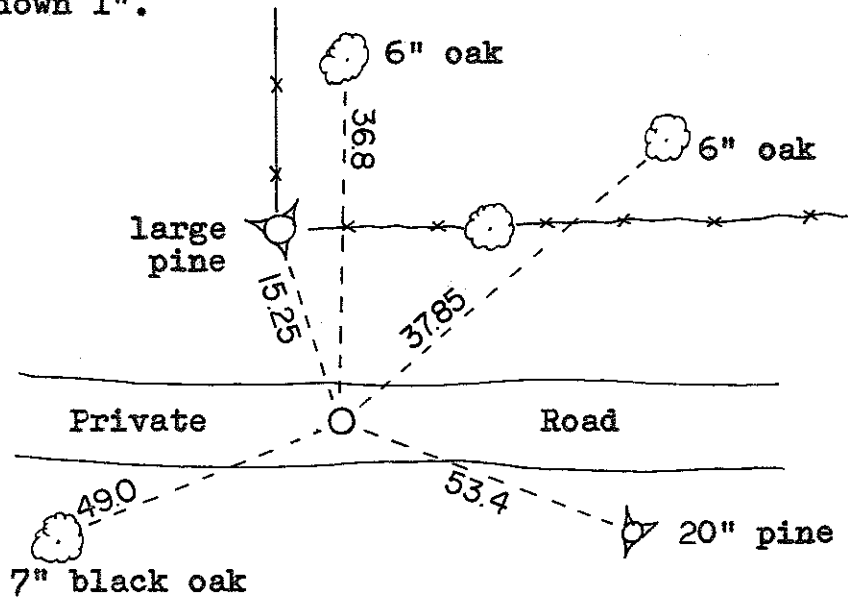
County Surveyor  
Title

Description of corner and witness monuments, references and accessories used to perpetuate the original or re-established location of this corner:

Set a Harrison marker in the road, down 1".

Witnesses to corner location:

W.C. Jung-Chief *W.C. Jung*  
A. Lueck



T 19 N R 1 W  
WISCONSIN

(All trees blazed.)

SURVEY CONTROL ORDER

Horizontal	_____
Vertical	_____

WISCONSIN COORDINATE SYSTEM

Corner	East (X)	North (Y)	Elevation (Z)	Zone
Control Sta. Name				

City, Village or Town Lincoln

County of Monroe

COUNTY SURVEYOR FORM NO. 1