

24

**U.S. PUBLIC LAND CORNER
MAINTENANCE**

Corner ID : S1/4 Sec. 2, T19N-R1W

21901020020

<u>DATE</u>	<u>CREW</u>	<u>MONUMENT TYPE</u> -----
April 8, 2016	Zachariah P.Dechant Gary L. Dechant	Found 1 1/4" iron pipe, 50' NE of PI of Atwood Ave 11' east of trail. Set new sign 1' west.

References:

	<u>Bearing</u>	<u>Distance</u>
1) Set 3/4"x24" iron pipe, down 6", 3' west of 4" Black Oak	N35E	30.01'
2) Set 3/4" x 24" iron pipe, down 6", 6' south of 14" Aspen	S65E	25.82'
3) Set 3/4" x24" iron pipe, down 6"	S14W	21.34'
4) Set 3/4" x 24" iron pipe, down 6", 2' west of and between two 9" White Pines	N60W	32.30'



CERTIFICATE

I, William C. Jung, do hereby certify that on the 1st day of October 1975, I found (evidence) ~~(evidence)~~ of the N¹/₄ corner of Section 11, T 19 N, R 1 W Fourth Principal Meridian, and I re-established said corner according to the Wisconsin Statutes as shown and described hereon.

Dated this 19th day of Jan. 1981.

William C. Jung

William C. Jung, R.L.S. 1323
Title

CERTIFIED LAND CORNER

History of corner establishment since Original Government Survey

No known recorded history since the original government survey

See Reverse Side For Maintenance

Description of corner evidence found:

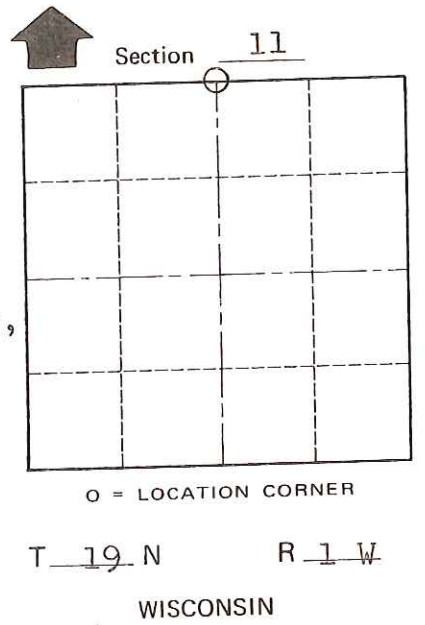
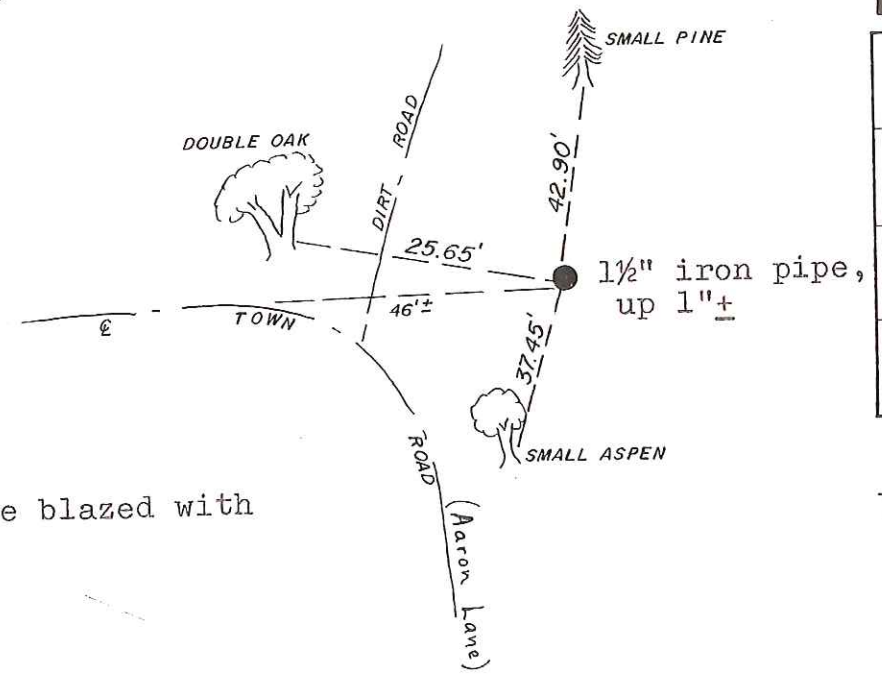
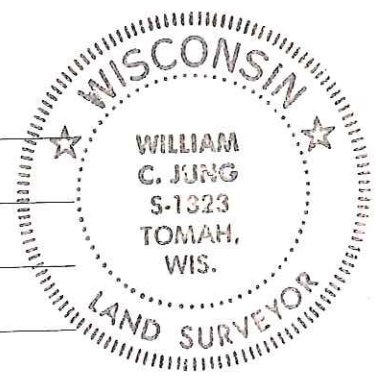
Found a 1 1/2" iron pipe. This may or may not be the corner; not confirmed with field measurements as of yet. July 9, 1980; corner confirmed by W. Jung, G. Dechant, C. Dade. Accepted the corner. It fits the North line of the section very well. Was corner set by Jimmy Carroll?

COUNTY SURVEYOR FORM NO. 1

Description of corner and witness monuments, references and accessories used to perpetuate the original or re-established location of this corner:

Witnesses to corner location:

W. Jung
A. Lueck
G. Dechant
C. Dade



(All trees are double blazed with N&C's set)

Approved: HARLEY A. SIME
MONROE CO. SURVEYOR

SURVEY CONTROL ORDER

Horizontal _____
Vertical _____

WISCONSIN COORDINATE SYSTEM

Corner	East (X)	North (Y)	Elevation (Z)	Zone
Control Sta. Name				

~~City, Village~~ or Town Lincoln
County of Monroe