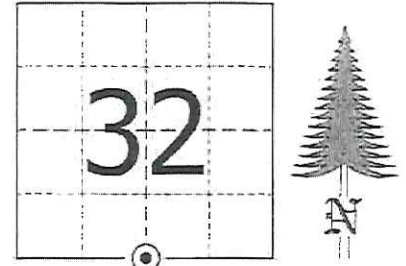


JACKSON COUNTY - U.S. PUBLIC LAND SURVEY MONUMENT RECORD

TYPE OF MONUMENT: Cast Iron Harrison Monument
 REFERENCED FOR SURVEY RECORDED IN CSM# _____ OR CSR# _____
 SURVEYOR'S FILE# OR PROJECT# Fieldbook: T20N-R1W, Pg. 22 - 23
 DRAWN BY: Ethan Remus
 WITNESS: Ethan Remus

CORNER VOL. 15, PAGE 2464
 CORNER# 22001320020
 SECTION 32, T. 20 N, R. 1W # 10
 S1/4 CORNER

GEOGRAPHIC LOCATION: NAD 83 (91) WISCRS- Jackson County
 COUNTY COORDINATE SYSTEM
 (TO BE ASSIGNED BY COUNTY)
 LATT: 44°09'37.68222" N
 LONG: 90°31'34.71064" W
 N = 48325.5597
 E = 172035.9711



LOCATION
(INDICATE W/ MONUMENT SYMBOL)

BASIS FOR MONUMENT LOCATION:

Please describe if this is a found, obliterated or lost corner. Give a complete history of the corner listing the vol. & page, dates, surveyor and description of found monument. Please list all parole testimony and who provided it as well as other witness' of recovery. Please describe the best way to reach this corner. Indicate how obstructed this monument might be for GPS observations. Continue on backside if necessary.

* James Freeman set a post for the quarter corner as part of the original Township Line survey in 1845. He referenced two bearing trees, a 14" Pine N7°W - 73.92', and a 12" Pine N5°W - 9.24'.

* I have found no record, in Jackson or Monroe Counties, of anyone using this corner between 1845 and 1980.

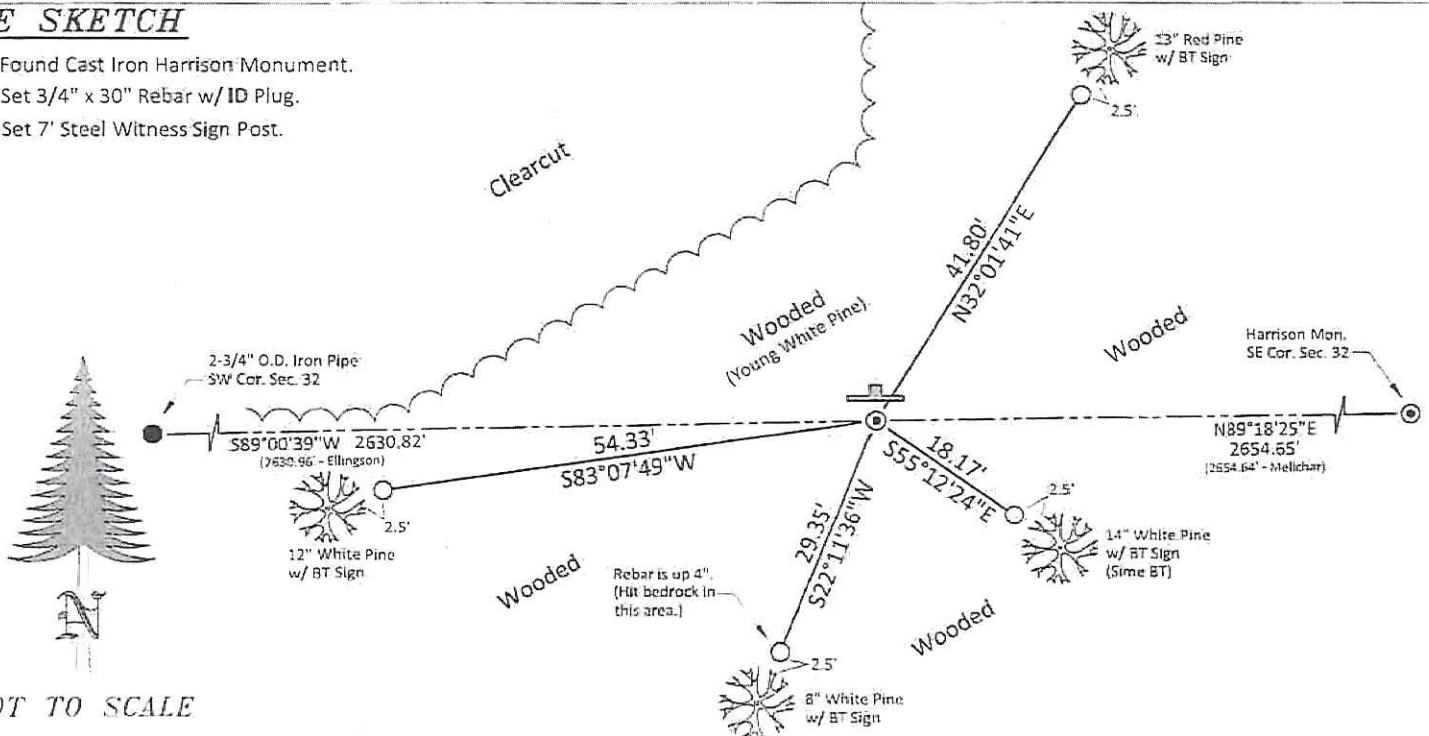
* Harley Sime reestablished this corner in 1980. He found an unrecorded iron pipe. After surveying the section, he accepted it as the quarter corner because it fit well. He replaced the iron pipe with a Harrison monument and drove a 1-1/2" iron pipe on the West side as a guard stake. He dug pits N-S and referenced the corner to four bearing trees. (See previous tie sheet)

* In December of 2015, I found Sime's Harrison monument leaning slightly NE, flush in a mound of earth with pits plain N-S. I found a steel T-Post about 1' East. Sime's bearing trees N-S-W are all stumps. I found his SE BT still alive, nail was grown over. I did not find the iron pipe guard stake that Sime had referenced. I accepted the Harrison as the quarter corner. I plumbed it and drove a 7' steel witness sign post 1' North. I moved the existing T-Post to 1' East and drove four rebar for references as depicted below. The corner can be observed directly with GPS. I accessed the corner on ATV, driving a logging trail SEly from Doers Rd. Take the logging trail to the County line, then head East about a 1/4 mile.

CERTIFIED CORRECT AND COMPLETE TO THE BEST OF MY KNOWLEDGE AND BELIEF:
Ethan D. Remus
 Professional Land Surveyor
 DATE: March 22, 2016

TIE SKETCH

- ⊙ = Found Cast Iron Harrison Monument.
- = Set 3/4" x 30" Rebar w/ ID Plug.
- ⚡ = Set 7' Steel Witness Sign Post.



NOT TO SCALE

I, Harley A. Sime, do hereby certify that on the 2nd day of May 19 80, I found (evidence) ~~(no evidence)~~ of the N¼ corner of Section 5, T19 N, R1 W Fourth Principal Meridian, and I re-established said corner according to the Wisconsin Statutes as shown and described hereon.

Dated this 6th day of Jan. 1981.

Approved: HARLEY A. SIME
MONROE CO., SURVEYOR

Title

History of corner establishment since Original Government Survey

No known recorded history since the original government survey.

Description of corner evidence found:

Found an unrecorded iron pipe at this corner. After surveying out the section it was accepted as the corner as it fit conditions well. Replaced the iron pipe with a Harrison Monument. Set 1½" iron pipe on West side of Harrison as guard stake. Corner is NW of small knoll.

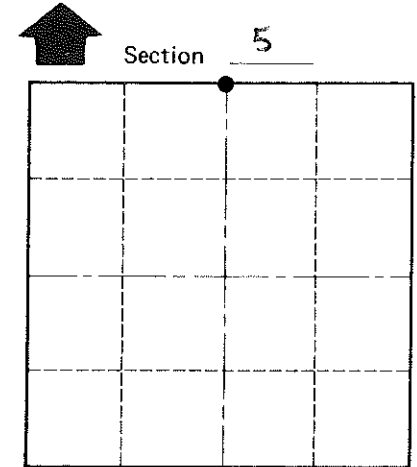
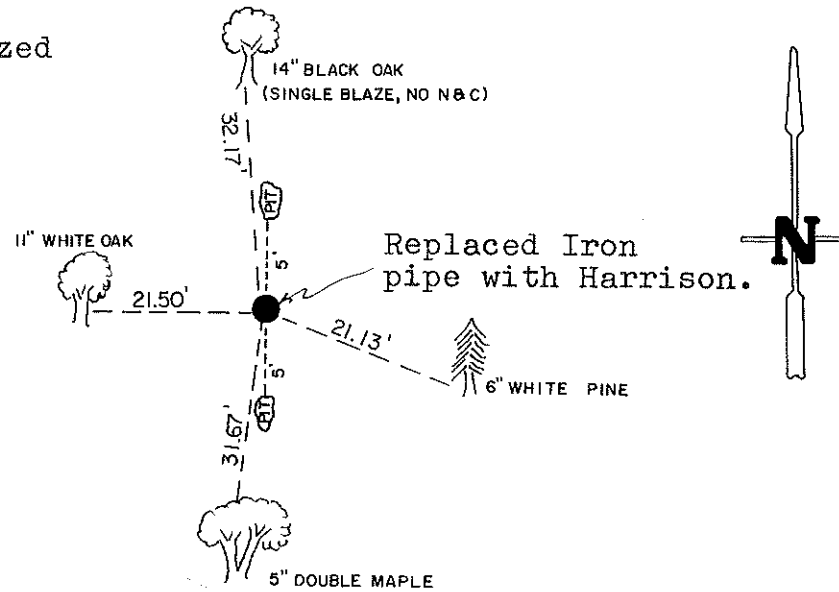
COUNTY SURVEYOR FORM NO. 1

Description of corner and witness monuments, references and accessories used to perpetuate the original or re-established location of this corner:

Witnesses to corner location:

G. Dechant
T. Tormoen
B. Meyer

(All trees are double blazed with N&C's set)



T 19 N R 1 W
WISCONSIN

SURVEY CONTROL ORDER

Horizontal	_____
Vertical	_____

WISCONSIN COORDINATE SYSTEM

Corner	East (X)	North (Y)	Elevation (Z)	Zone
Control Sta. Name				

City, Village or Town Lincoln

County of Monroe