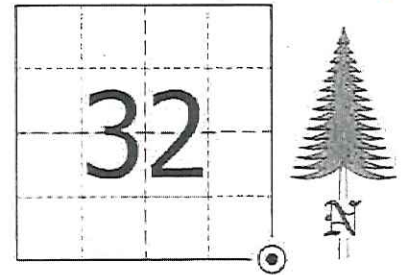


JACKSON COUNTY - U.S. PUBLIC LAND SURVEY MONUMENT RECORD

TYPE OF MONUMENT: Cast Iron Harrison Monument
 REFERENCED FOR SURVEY RECORDED IN CSM# _____ OR CSR# _____
 SURVEYOR'S FILE# OR PROJECT# Fieldbook: T20N-R1W, Pg. 24 - 25
 DRAWN BY: Ethan Remus
 WITNESS: Ethan Remus

CORNER VOL. 15, PAGE 2463
 CORNER# 22001320000
 SECTION 32, T 20 N, R 1W
 SE CORNER # 9

GEOGRAPHIC LOCATION: NAD 83 (91) WISCRS- Jackson County
 COUNTY COORDINATE SYSTEM
 (TO BE ASSIGNED BY COUNTY)
 LATT: 44°09'37.89639" N
 LONG: 90°30'58.29754" W
 N = 48357.6744
 E = 174690.4226



LOCATION
 (INDICATE W/ MONUMENT SYMBOL)

BASIS FOR MONUMENT LOCATION:

Please describe if this is a found, obliterated or lost corner. Give a complete history of the corner listing the vol & page, dates, surveyor and description of found monument. Please list all parole testimony and who provided it as well as other witness' of recovery. Please describe the best way to reach this corner. Indicate how obstructed this monument might be for GPS observations. Continue on backside if necessary.

* James Freeman set a post for the section corner as part of the original Township Line survey in 1845. He referenced two bearing trees, a 17" Pine N47°E - 37.62', and a 20" Pine N30°W - 19.80'.

* I have found no record, in Jackson or Monroe Counties, of anyone using this corner between 1845 and 1980.

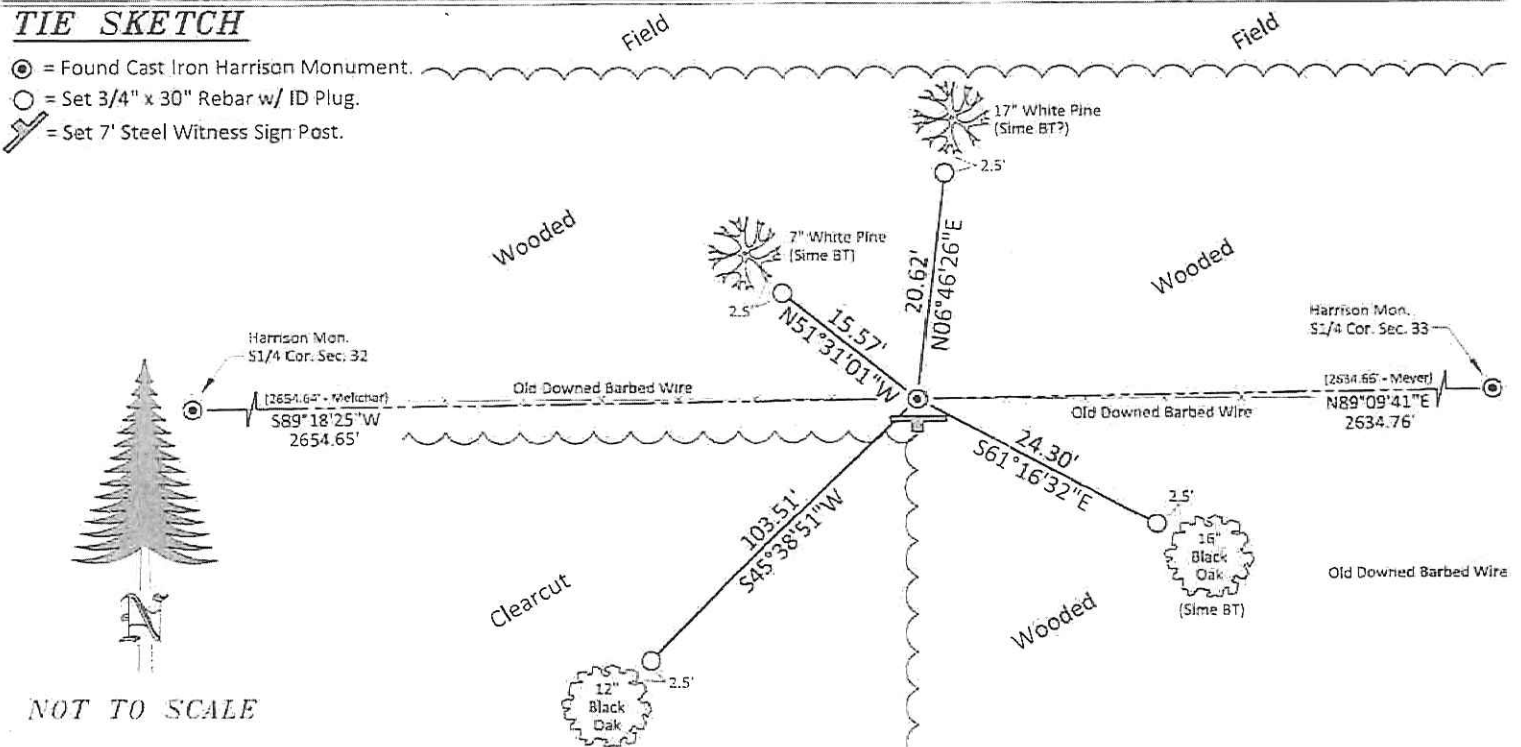
* Harley Sime reestablished this corner in 1980. He found an unrecorded angle iron that fit field evidence well. He accepted it as the section corner and replaced it with a Harrison monument, set in a mound of earth with pits NE-SW. He drove a steel fence post next to the Harrison and referenced the corner to three bearing trees. (See previous tie sheet)

* In December of 2015, I found Sime's Harrison monument leaning slightly NE, up 3" in a mound of earth with pits plain NE-SW. I found an angle iron and a wood post set on the South side of the Harrison as guard stakes. I found Sime's bearing trees to the SE and NW ok. His record distance to his North BT would land out in a field. I found no stump, but I found a 17" White Pine in the right direction, at a distance of about 23.45' (record being 33.45'). This tree appears to have an upper/lower blaze and it sounds like there is a nail in the lower blaze. I accepted Sime's Harrison as the section corner. I plumbed it and drove a 7' steel witness sign post 1' South. I moved the angle iron guard stake to 1' east and the wood post to 1' West. I dug out the existing pits and used the dirt to build up the mound. I drove four rebar for references as depicted below. The corner can be observed directly with GPS and can be easily accessed from the North, driving along the edges of a field.

CERTIFIED CORRECT AND COMPLETE TO THE BEST OF MY KNOWLEDGE AND BELIEF:
 Professional Land Surveyor
 DATE: March 22, 2016

TIE SKETCH

- ⊙ = Found Cast Iron Harrison Monument.
- = Set 3/4" x 30" Rebar w/ ID Plug.
- ⚡ = Set 7' Steel Witness Sign Post.



I, Harley A. Sime, do hereby certify that on the 2nd day of May 1980, I found (evidence) ~~(no evidence)~~ of the NE corner of Section 5, T 19 N, R 1 W Fourth Principal Meridian, and I re-established said corner according to the Wisconsin Statutes as shown and described hereon.

History of corner establishment since Original Government Survey

No known recorded history since the original government survey.

Description of corner evidence found:

Found an unrecorded angle iron monument at this corner. It fit existing field evidence very well and accepted it as the corner. Replaced the angle iron with a Harrison Monument.

Dated this 6th day of Jan. 1981.

Approved: **HARLEY A. SIME**
MONROE CO. SURVEYOR

Title

COUNTY SURVEYOR FORM NO. 1

Description of corner and witness monuments, references and accessories used to perpetuate the original or re-established location of this corner:

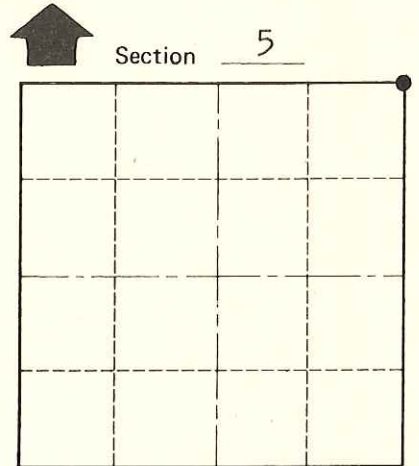
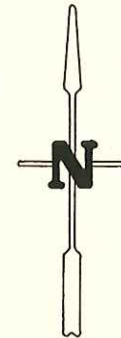
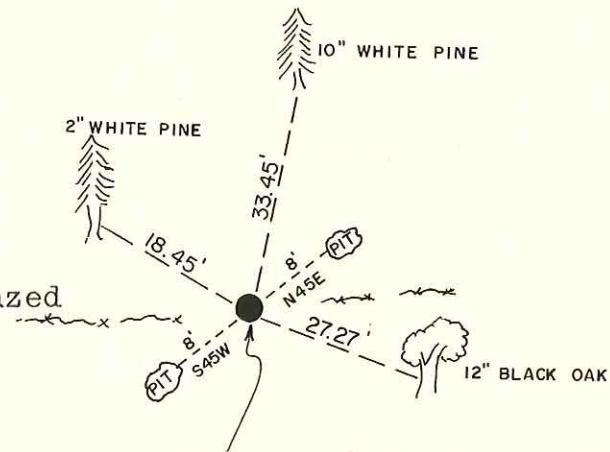
Witnesses to corner location:

G. Dechant

T. Tormoen

C. Dade

(All trees are double blazed with N&C's set)



● = LOCATION CORNER

T 19 N R 1 W

WISCONSIN

Replaced existing angle iron with a Harrison Monument. Set in mound and set a steel fence post next to Harrison.

SURVEY CONTROL ORDER

Horizontal	_____
Vertical	_____

WISCONSIN COORDINATE SYSTEM

Corner	East (X)	North (Y)	Elevation (Z)	Zone
Control Sta. Name				

City, Village or Town Lincoln

County of Monroe