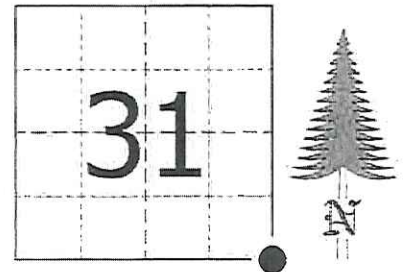


# JACKSON COUNTY - U.S. PUBLIC LAND SURVEY MONUMENT RECORD

TYPE OF MONUMENT: 2-3/4" O.D. Iron Pipe  
 REFERENCED FOR SURVEY RECORDED IN CSM# \_\_\_\_\_ OR CSR# \_\_\_\_\_  
 SURVEYOR'S FILE# OR PROJECT# Fieldbook: T20N-R1W, Pg. 26 - 27  
 DRAWN BY: Ethan Remus  
 WITNESS: Ethan Remus

CORNER VOL. 15, PAGE 2465  
 CORNER# 22001310000  
 SECTION 31, T 20 N, R 1W # 11  
 SE CORNER

GEOGRAPHIC LOCATION: NAD 83 (91) WISCRS- Jackson County  
 COUNTY COORDINATE SYSTEM  
 (TO BE ASSIGNED BY COUNTY)  
 LATT: 44°09'37.33259" N  
 LONG: 90°32'10.79481" W  
 N = 48280.1420  
 E = 169405.5447



LOCATION  
 (INDICATE W/ MONUMENT SYMBOL)

## BASIS FOR MONUMENT LOCATION:

Please describe if this is a found, obliterated or lost corner. Give a complete history of the corner listing the vol & page, dates, surveyor and description of found monument. Please list all parole testimony and who provided it as well as other witness of recovery. Please describe the best way to reach this corner. Indicate how obstructed this monument might be for GPS observations. Continue on backside if necessary.

\* James Freeman set a post for the section corner as part of the original Township Line survey in 1845. He referenced two bearing trees, a 14" Pine N5B°E - 38.28', and a 18" Pine N65°W - 23.10'.

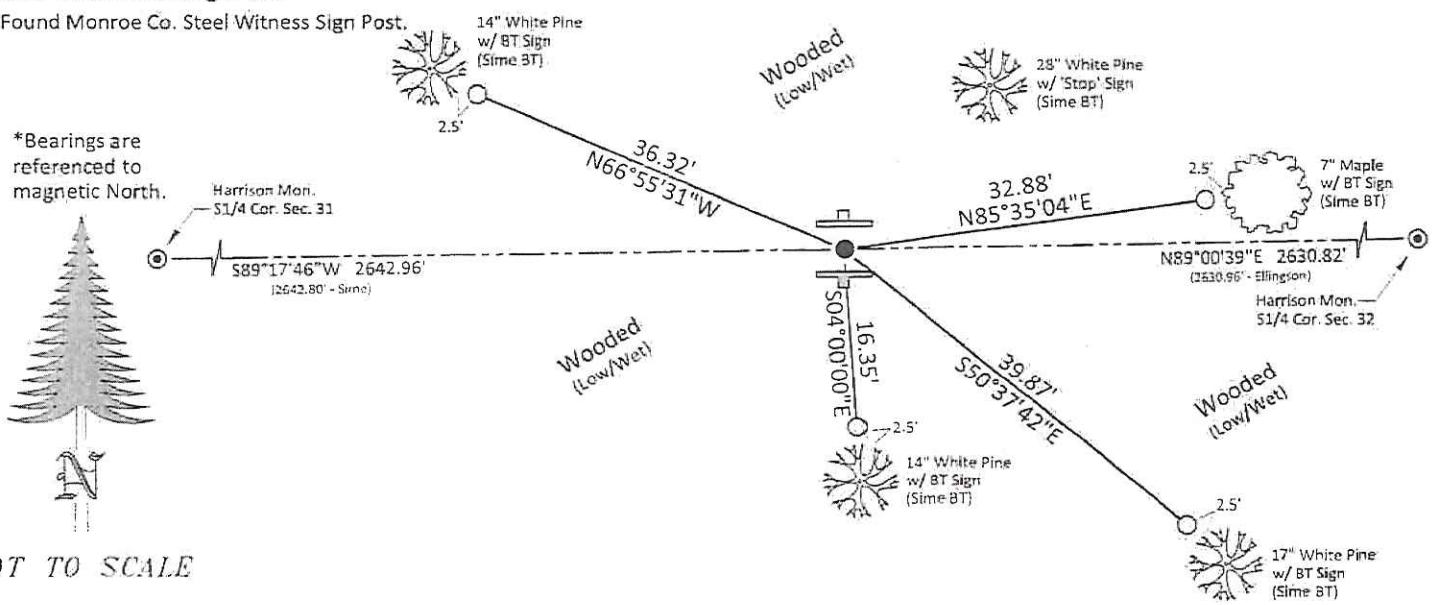
\* D.A. Blencoe used this corner to reestablish the SW corner of the Township for his resurvey of South Millston around 1936. His notes on this corner are difficult to understand. It is my interpretation that he found a 3-1/2" square, painted and marked post, verified by the remains of both Gov't bearing trees. He drove a buggy axle at the corner. (Blencoe's South Millston Fieldbook on Pg. 59)

\* Harley Sime found Blencoe's buggy axle in 1980. He replaced it with a 2-1/2" x 7' iron pipe and referenced it to five bearing trees. (See previous tie sheet)

\* In December of 2015, I found Sime's 2-3/4" O.D. iron pipe plumb and in excellent condition, up 43" above a large mound of earth with large pits plain N-S-E-W. There was a Monroe Co. witness sign post about 3' Ely. I found all of Sime's bearing trees as depicted below. Nails were visible in the South and SE BT's, all others were grown over. I accepted Sime's pipe as the section corner and drove it down to 30" above mound. I drove a 7' steel witness sign post 1' South and moved the Monroe Co. sign to 1' North. I drove four iron pipes for references as depicted below. I was able to observe this corner with GPS after the leaves fell and there were many satellites available. Observations would be quite difficult otherwise. I accessed this corner on ATV, driving a logging trail SEly from Doers Rd. I drove this trail until I was due North of the corner, than cut South through the clearcut, about 0.1 miles.

## TIE SKETCH

- = Found 2-3/4" O.D. Iron Pipe (up 30").
- = Set 1-3/8" O.D. x 42" Iron Pipe w/ ID Plug.
- ⊕ = Set 7' Steel Witness Sign Post.
- ⊗ = Found Monroe Co. Steel Witness Sign Post.



NOT TO SCALE

I, Harley A. Sime, do hereby certify that on the 15th day of April 19 80, I found (evidence) (~~no evidence~~) of the NE corner of Section 6, T 19 N, R 1 W Fourth Principal Meridian, and I re-established said corner according to the Wisconsin Statutes as shown and described hereon.

Dated this 5th day of Feb. 1981.

**Approved: HARLEY A. SIME**  
**MONROE CO. SURVEYOR**

Title

History of corner establishment since Original Government Survey  
Blencoe shows a buggy axle at this corner.

Description of corner evidence found:

Found Blencoe's buggy axle and replaced it with a 2½"x7' iron pipe

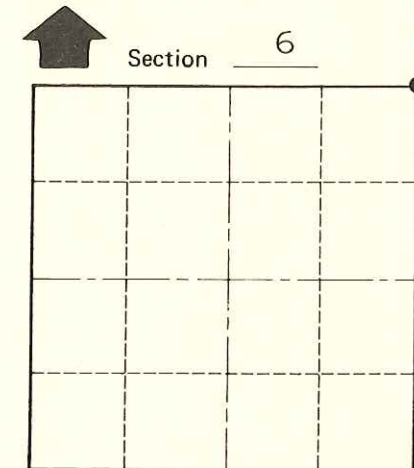
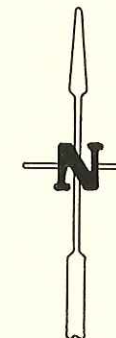
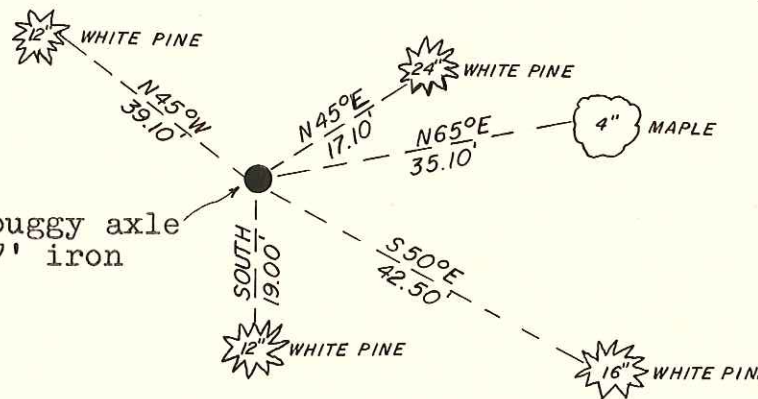
COUNTY SURVEYOR FORM NO. 1

Description of corner and witness monuments, references and accessories used to perpetuate the original or re-established location of this corner:

Witnesses to corner location:

G. Dechant  
T. Tormoen  
S. Sowers

Replaced buggy axle with 2½"x7' iron pipe.



● = LOCATION CORNER  
T 19 N R 1 W  
WISCONSIN

**SIGN PLACED** 10-26-93

(All trees double blazed with N&C's set)

SURVEY CONTROL ORDER

Horizontal	_____
Vertical	_____

WISCONSIN COORDINATE SYSTEM

Corner	East (X)	North (Y)	Elevation (Z)	Zone
Control Sta. Name				

City, Village or Town Lincoln  
County of Monroe