

21901080020

I, Garold A. Sime, do hereby certify that on the 7th day of November 19 84, I found (evidence) ~~(no evidence)~~ of the N 1/4 corner of Section 17, T19 N, R1 W Fourth Principal Meridian, and I re-established said corner according to the Wisconsin Statutes as shown and described hereon.

Dated this 7th day of Nov. 19 84.

Garold A. Sime

Deputy County Surveyor
Title

History of corner establishment since Original Government Survey

Fred Zietlow set an 3/4" iron bar at the existing 4-way fence corner in July of 1969. This corner has also been used in several other surveys at later dates by Duane Marten, Garold A. Sime & Feddersen Eng. & Surveying.

Description of corner evidence found:

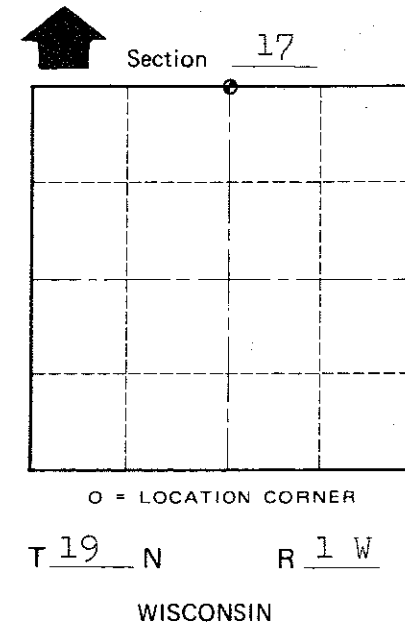
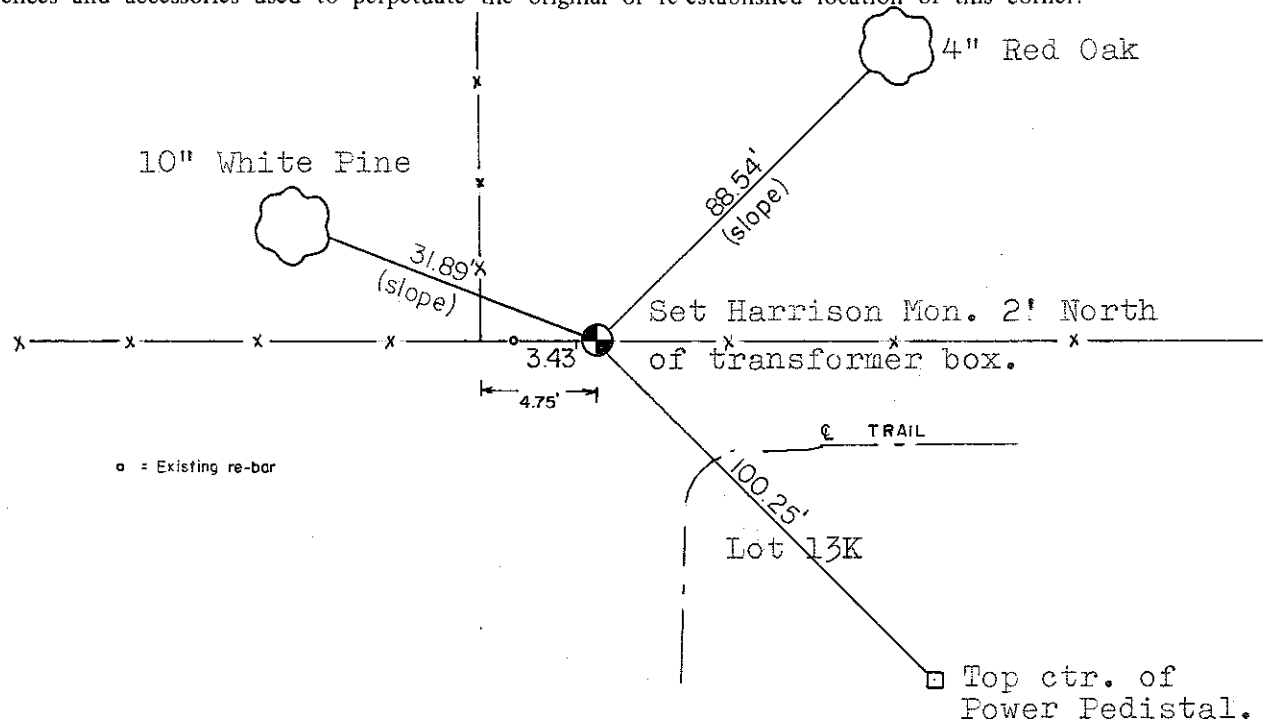
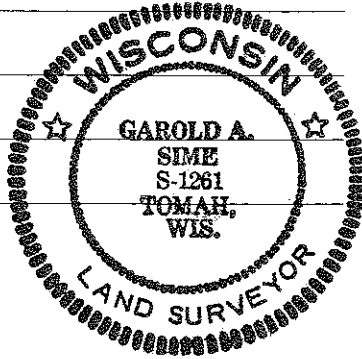
In surveying Sec.17 in Oct. of 1975 I found that the iron bar set by Zietlow had been moved to the new fence corner location. I set this harrison monument at the original location of Zietlow's iron bar. Remnants of old fence were found at this location. This corner lands 4.75 feet east of where Zietlows iron bar was found.

Description of corner and witness monuments, references and accessories used to perpetuate the original or re-established location of this corner:

Witnesses to corner location:

Garold A. Sime, R.L.S.

James Lund



COUNTY SURVEYOR FORM NO. 1

SURVEY CONTROL ORDER

Horizontal	_____
Vertical	_____

WISCONSIN COORDINATE SYSTEM

Corner	East (X)	North (Y)	Elevation (Z)	Zone
Control Sta. Name				

City, Village or Town Lincoln

County of Monroe