

**U.S. PUBLIC LAND CORNER  
MAINTENANCE**

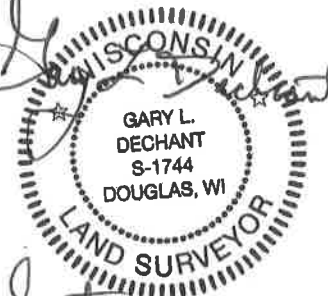
**# 52**

**Corner ID: N1/4 Sec.18, T19N-R1W**

**21901070020**

<u>DATE</u>	<u>CREW</u>	<u>MONUMENT INFO</u>
August 19, 2020	Zachariah P. Dechant Gary L. Dechant	Found stone (+) and Harrison 0.50' south. <b>STONE IS ACTUAL CORNER.</b> Falls 12' east of trail 175' south of trail intersection. Steel post 1/2' north. Set new sign 1' west.

	<u>Bearing</u>	<u>Distance</u>
1) Set 2' section of T post 4' SW of 4" Maple	N20E	36.91'
2) Set 2' section of T post, 4' NW of 3" White Oak	S78E	19.86
3) Set 2' section of T post, 4' NE of 4" White Oak	S54W	30.97'
4) Set 2' section of T post, 4' SE of 6" White Oak	N65W	41.33'

*Gary L. Dechant*  
  
*September 9, 2020*

I, William C. Jung, do hereby certify that on the 13th day of June, 1979, I found (evidence) ~~(no evidence)~~ of the North 1/4 corner of Section 18, T 19 N, R 1 W Fourth Principal Meridian, and I re-established said corner according to the Wisconsin Statutes as shown and described hereon.

History of corner establishment since Original Government Survey  
 A.S. Ingalls was at this corner in April of 1873. Fred Holden was at this corner in May of 1902. Harley Sime found a stone at this corner in the Spring of 1963. He again used this stone in a September, 1965 survey. Duane Marten used this stone in a September, 1973 survey.

Description of corner evidence found:

Dated this 5th day of Feb. 1981.

Found the stone of record. Set a Harrison monument South of the stone as a witness monument.

*William C. Jung*

William C. Jung, R.L.S. 1323  
Title

**See Reverse Side For Maintenance**

Approved: **HARLEY A. SIME**  
**MONROE CO. SURVEYOR**

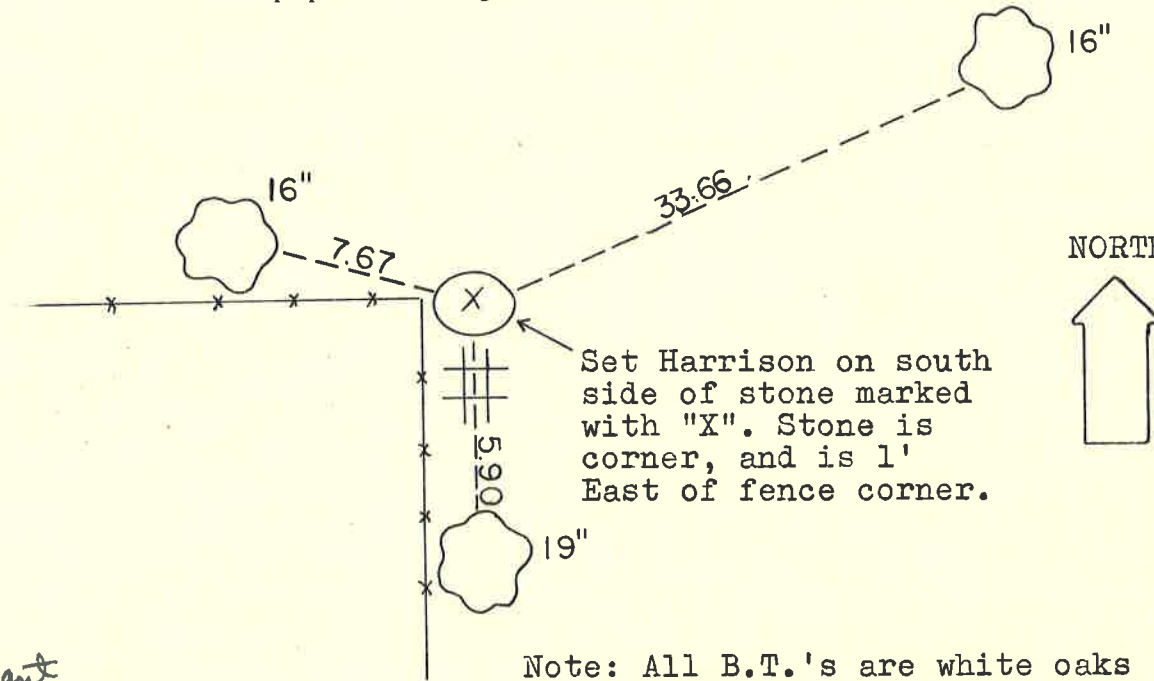
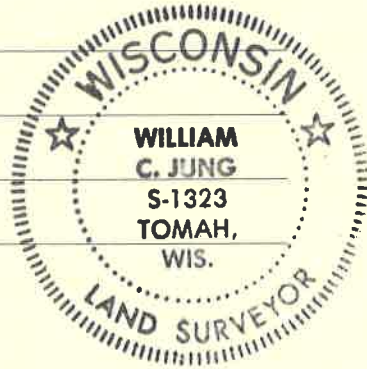
Description of corner and witness monuments, references and accessories used to perpetuate the original or re-established location of this corner:

Witnesses to corner location:

W. Jung

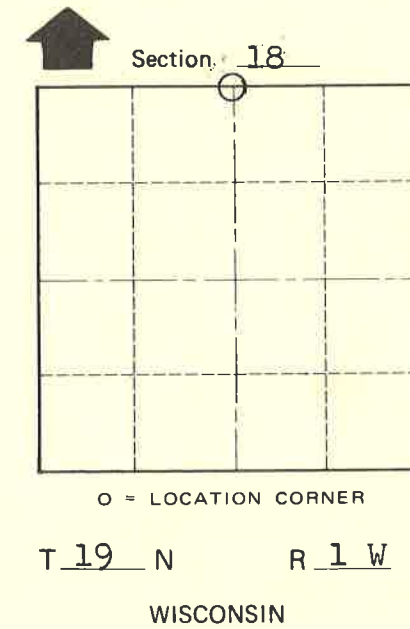
D. Dade

T. Webb



Set Harrison on south side of stone marked with "X". Stone is corner, and is 1' East of fence corner.

Note: All B.T.'s are white oaks double blazed w/N&C's set.



SURVEY CONTROL ORDER

Horizontal \_\_\_\_\_

Vertical \_\_\_\_\_

*Harry L. Dechant*  
 10-5-2015

County WISCONSIN COORDINATE SYSTEM

Corner	East (X)	North (Y)	Elevation (Z)	Zone
	695990.723	447636.982		
Control Sta. Name				

City, Village or Town Lincoln

County of Monroe

COUNTY SURVEYOR FORM NO. 1