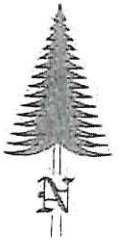
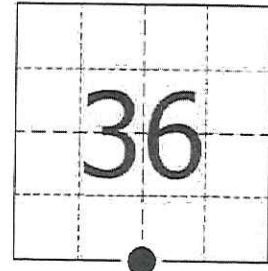


JACKSON COUNTY - U.S. PUBLIC LAND SURVEY MONUMENT RECORD

TYPE OF MONUMENT: 2-3/8" O.D. Iron Pipe w/ Threaded Iron Cap
 REFERENCED FOR SURVEY RECORDED IN CSM# _____ OR CSR# _____
 SURVEYOR'S FILE# OR PROJECT# Fieldbook: T20N-R1E, Pg. 30 - 31
 DRAWN BY: Ethan Remus
 WITNESS: Ethan Remus & Tim Jeatran

CORNER VOL. 5, PAGE 678
 CORNER# 42001360020
 SECTION 36, T 20 N, R 1E # 2
 S1/4 CORNER

GEOGRAPHIC LOCATION: NAD 83 (91) WISCRS- Jackson County
 COUNTY COORDINATE SYSTEM
 (TO BE ASSIGNED BY COUNTY)
 LATT: 44°09'19.59974" N
 LONG: 90°19'21.72860" W
 N = 46767.1390
 E = 225482.4600



LOCATION
 (INDICATE W/ MONUMENT SYMBOL)

BASIS FOR MONUMENT LOCATION:

Please describe if this is a found, obliterated or lost corner. Give a complete history of the corner listing the vol & page, dates, surveyor and description of found monument. Please list all parole testimony and who provided it as well as other witness of recovery. Please describe the best way to reach this corner. Indicate how obstructed this monument might be for GPS observations. Continue on backside if necessary.

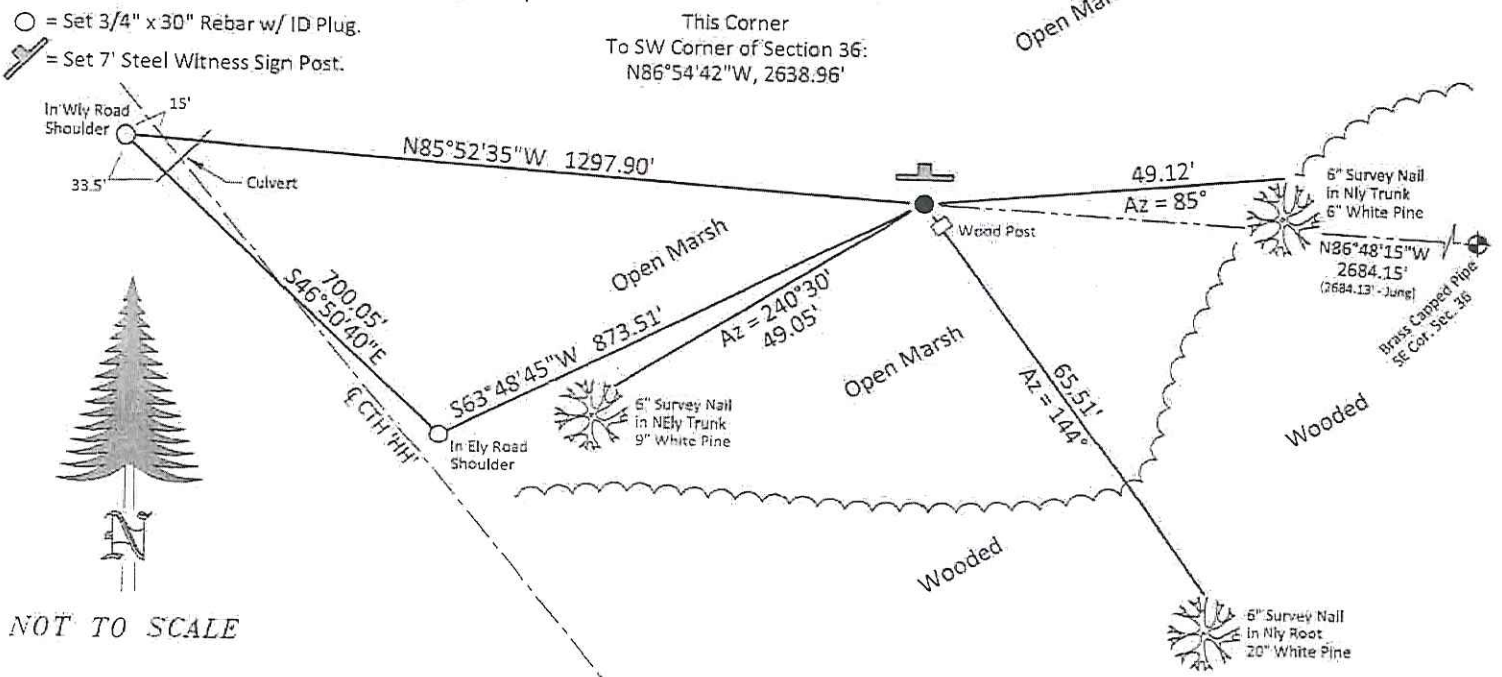
- * George Stuntz and James Sargent set a post for the quarter corner as part of the original Township Line survey in 1851. They referenced two bearing trees, a 8" Tamarac N65°E - 19.80', and a 8" Tamarac S10°E - 17.16'.
- * G.M. Adams used this corner in 1888. He records finding both Gov't bearing trees dead. He set a post for the corner and referenced a new bearing tree, 8" White Pine S18°E - 9.24'. (CSR No. 252 in Vol. 1 on Pg. 311)
- * S.L. Kennedy reestablished this corner in 1938. He set a standard pipe at 40 chains from the West. He notes the corner is .12 (Chains?/Links?) South of a downed E-W fence. He also notes that he searched here but found nothing. (Kennedy's Fieldbook No. 27 on Pg. 22 and Book No. 25 on Pg. 50)
- * Bill Jung visited this corner in 1976. He found a 3" capped iron pipe from Kennedy, up 2.5' in a swamp. He referenced two bearing trees to this corner. (See previous tie sheet) also (CSR No. 2356 in Vol. 6 on Pg. 493)
- * In February of 2016, I found Kennedy's standard pipe (2-3/8" O.D. iron pipe w/ threaded on iron cap) at this corner, up 30" above ground in a marsh with a 4-1/2" x 3" wood post about 1' SEly. The pipe was leaning slightly SW. I found both of Jung's bearing trees standing dead, but upper/lower blazes were still plain. I accepted Kennedy's pipe as the quarter corner and plumbed it. I drove a steel witness sign post one ft North and set three survey nails in trees for references. I also drove two rebar along CTH 'HH' for references (The corner is visible from the Nly rebar). The corner is open for GPS.

CERTIFIED CORRECT AND COMPLETE
 TO THE BEST OF MY KNOWLEDGE
 AND BELIEF:

Ethan D. Remus
 Professional Land Surveyor
 DATE: March 14, 2016

TIE SKETCH

- = Found 2-3/8" O.D. Iron Pipe w/ Threaded Iron Cap.
- = Set 3/4" x 30" Rebar w/ ID Plug.
- ✂ = Set 7' Steel Witness Sign Post.



NOT TO SCALE

42001360020

I, William C. Jung, do hereby certify that on the 16th day of November 19 76, I found (evidence) (~~no evidence~~) of the N 1/4 corner of Section 1, T 19 N, R 1 E, Fourth Principal Meridian, and I re-established said corner according to the Wisconsin Statutes as shown and described hereon.

History of original corner establishment:

No known recorded history since the original government survey, in the Monroe County Records. However, in the Jackson County Records, George Adams set a post here in October of 1888.

Description of corner evidence found:

This pipe was apparently set by Kennedy, Juneau County Surveyor, in the 1930's.

Dated this 15th day of March 1978.

William C. Jung, R.L.S. 1323

Crew Chief, County Surveyor's
Title
Office

COUNTY SURVEYOR FORM NO. 1

Description of corner and witness monuments, references and accessories used to perpetuate the original or re-established location of this corner:

Found capped iron pipe, up 2.5'+ in swamp, did not find Adam's bearing tree.

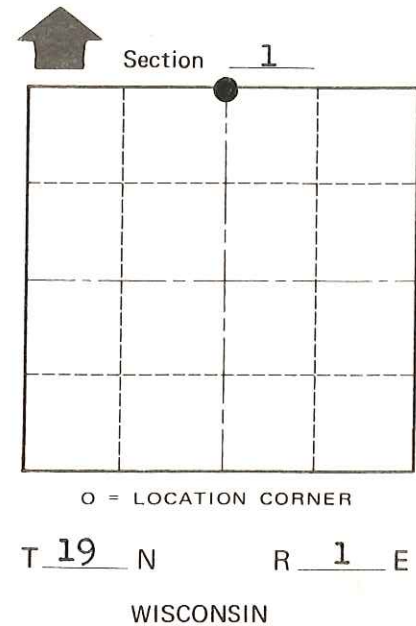
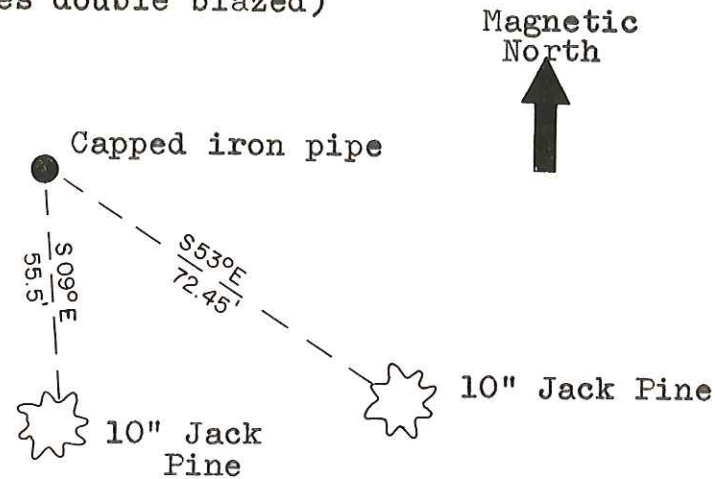
Witnesses to corner location:

W. Jung

B. Rasmussen



(Trees double blazed)



SURVEY CONTROL ORDER

Approved by: Harley A. Sime
 County Surveyor

WISCONSIN COORDINATE SYSTEM

Corner	East (X)	North (Y)	Elevation (Z)	Zone
Control Sta. Name				

City, Village or Town Scott

County of Monroe