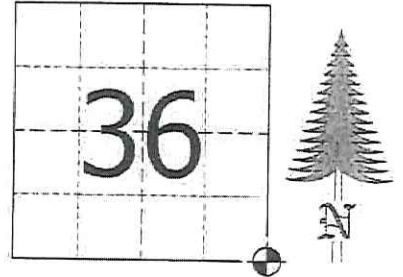


JACKSON COUNTY - U.S. PUBLIC LAND SURVEY MONUMENT RECORD

TYPE OF MONUMENT: 2-3/8" O.D. x 72" Brass Capped Iron Pipe
 REFERENCED FOR SURVEY RECORDED IN CSM# _____ OR CSR# _____
 SURVEYOR'S FILE# OR PROJECT# Fieldbook: T20N-R1E, Pg. 12 - 13
 DRAWN BY: Ethan Remus
 WITNESS: Ethan Remus & Tim Jeatran

CORNER VOL. 5, PAGE 677
 CORNER# 42001360000
 SECTION 36, T 20 N, R 1E # 1
 SE CORNER

GEOGRAPHIC LOCATION: NAD 83 (91) WISCRS- Jackson County
 COUNTY COORDINATE SYSTEM
 (TO BE ASSIGNED BY COUNTY)
 LATT: 44°09'17.95269" N
 LONG: 90°18'44.98453" W
 N = 46617.5014
 E = 228162.4335



LOCATION
 (INDICATE W/ MONUMENT SYMBOL)

BASIS FOR MONUMENT LOCATION:

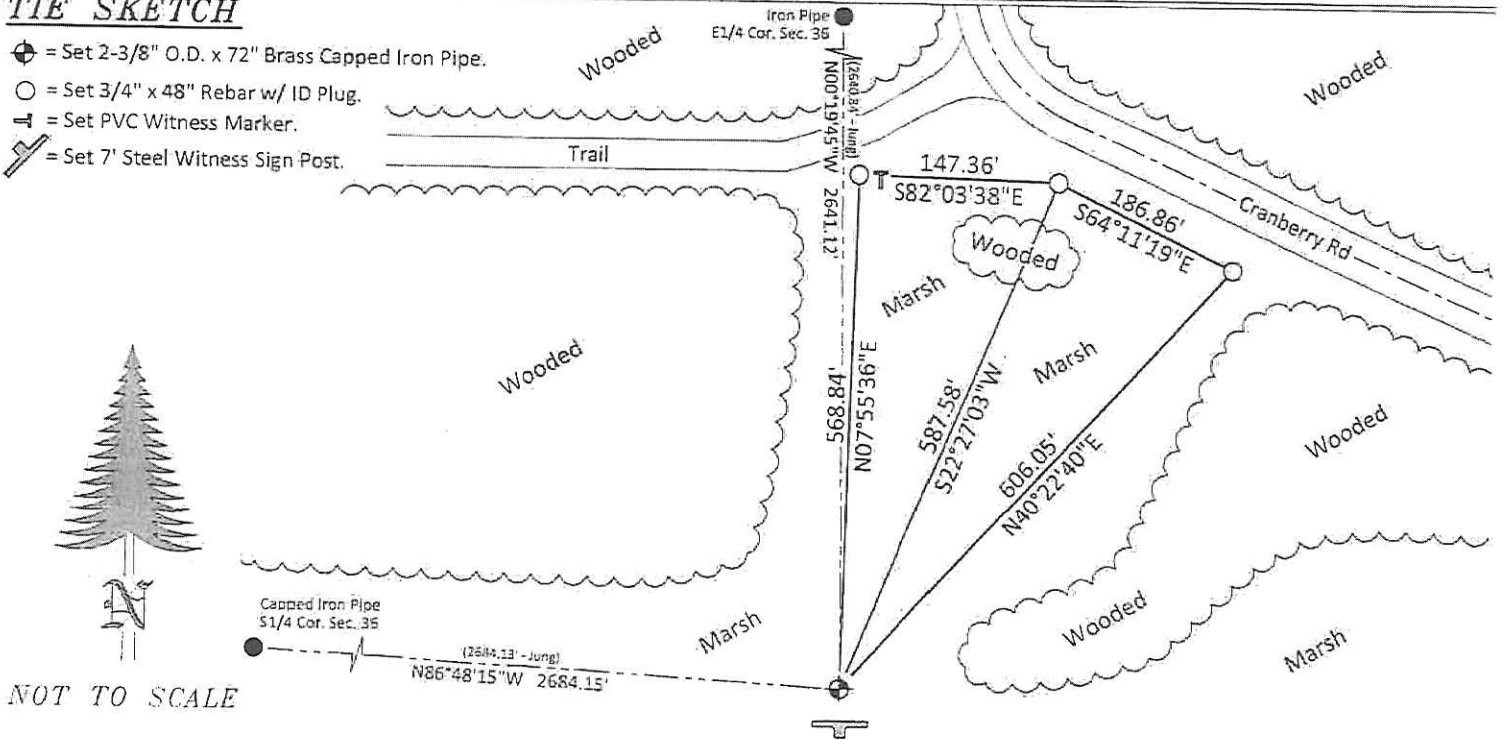
Please describe if this is a found, obliterated, or lost corner. Give a complete history of the corner listing the vol. & page, dates, surveyor and description of found monument. Please list all parole testimony and who provided it as well as other witness of recovery. Please describe the best way to reach this corner. Indicate how obstructed this monument might be for GPS observations. Continue on backside if necessary.

- * George Stuntz and James Sargent set a post for the Township corner as part of the original Township Line survey in 1851. They referenced four bearing trees, a 8" Black Pine S10°W - 29.70', a 8" Tamarac N10°W - 40.26', a 12" Tamarac N20°E - 46.84', and a 10" Black Pine S39°E - 22.44'.
- * John Patterson (Juneau Co. Surveyor) ran the West line of Section 31 in 1889, But does not mention anything specific about this corner.
- * S.L. Kennedy surveyed the North line of T19N-R1E around 1937. He set iron pipes with threaded on iron caps at corners and for reference monuments. He mentions this corner a few times in his notes but I could not find any specific reference to what he found or set at this location.
- * Bill Jung visited this corner in 1976. He found a capped iron pipe from Kennedy in an old reservoir. He notes that local residents knew of this pipe and had accepted it as the corner. He established three references to this corner. (See previous tie sheet) also (CSR No. 2356 in Vol. 6 on Pg. 493)
- * James Carroll visited this corner in 1985. He found a 2" capped pipe up 18" above ground and accepted it as the Township corner. He established five references to this corner. (See previous tie sheet) also (Juneau Co. CSM No. 1046)
- * In November of 2015, I found Kennedy's standard pipe (2-3/8" O.D. iron pipe w/ threaded on iron cap) at this corner, up 24" above ground in a marsh. The pipe was leaning NEly. I accepted it as the Township corner, plumbed it and attempted to drive it down. The top 10" of the pipe started to break off while I was driving it down, so I pulled it out (measured 72" long) and slid a new 2-3/8" O.D. x 72" brass capped iron pipe in the same stakehole. I drove it down until the top of the pipe was up 6" above the ground. I drove a steel witness sign post 2' South and drove three rebar for references as depicted below. The corner is open for GPS. To access, park along Cranberry Rd and walk SWly through the marsh. There are some White Pine islands (higher ground) that you can walk to try and stay dry.

CERTIFIED CORRECT AND COMPLETE TO THE BEST OF MY KNOWLEDGE AND BELIEF:
Ethan Remus
 Professional Land Surveyor
 DATE: March 14, 2016

TIE SKETCH

- ⊕ = Set 2-3/8" O.D. x 72" Brass Capped Iron Pipe.
- = Set 3/4" x 48" Rebar w/ ID Plug.
- = Set PVC Witness Marker.
- ⚡ = Set 7' Steel Witness Sign Post.



NOT TO SCALE

42001360000

JUNEAU COUNTY

Survey Monument Record

TYPE OF MONUMENT: 2" Capped Pipe

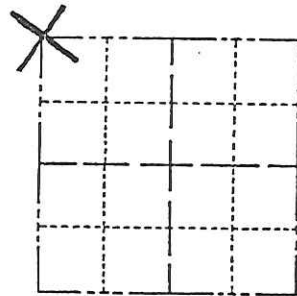
STATE PLANE COORDINATES: N _____ E _____

ELEVATION — M.S.L. DATUM: _____

THETA ANGLE: _____

FIELD BOOK: _____ PAGE _____

CORNER NO. 1
SECTION 6
TOWN 19
RANGE 2E



LOCATION (Indicated by 'X')

SEAL:

BASIS FOR MONUMENT LOCATION

(Use reverse side if necessary)

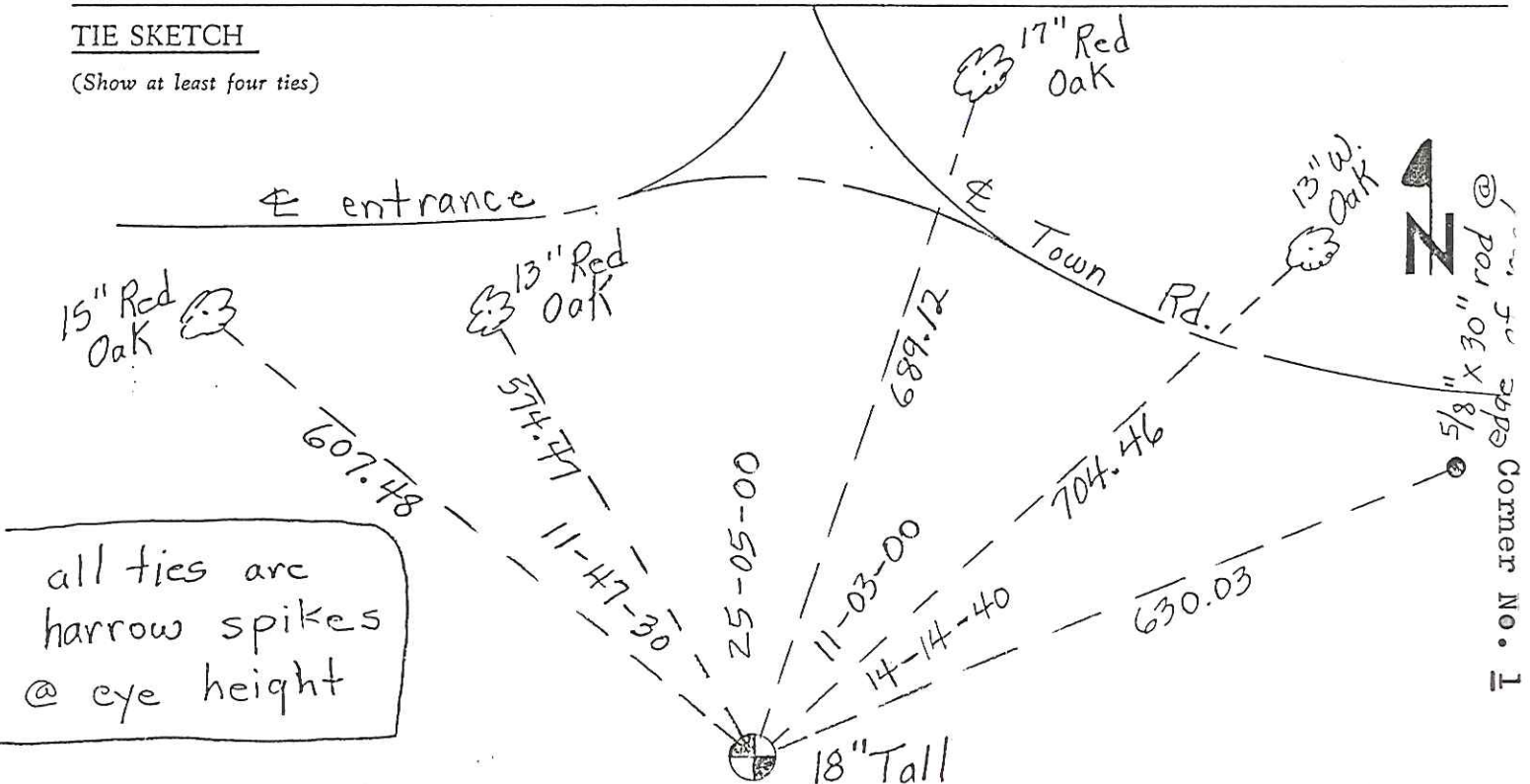
Show info such as: History of corner, with reference to Vol. and pg, dates, surveyor; exact description of monument replaced; if location computed, by taped or EDM traverse; landowner remarks, etc.

2" Capped Pipe found in place. Accepted as the true location for this corner.

CERTIFIED CORRECT: James J. Carroll
Registered Land Surveyor
DATE: 2/18/86

TIE SKETCH

(Show at least four ties)



all ties are harrow spikes @ eye height

5/8" x 30" rod @ 5/5
Corner No. 1

CERTIFICATE

CERTIFIED LAND CORNER

No. 1

42001360000

I, William C. Jung, do hereby certify that on the 29th day of November 1976, I found (evidence) (~~no evidence~~) of the NE corner of Section 1, T 19 N, R 1 E, Fourth Principal Meridian, and I re-established said corner according to the Wisconsin Statutes as shown and described hereon.

History of original corner establishment:
No known recorded history since the original government survey.

Dated this 15th day of March 1978.

Description of corner evidence found:

This pipe was set by Kennedy, Juneau County Surveyor, in the 1930's.

William C. Jung, R.L.S. 1323

Crew Chief, County Surveyor's
Title Office

Description of corner and witness monuments, references and accessories used to perpetuate the original or re-established location of this corner:

Found 3" capped iron pipe up 1'+ in marsh, may be under water during wet season.

Witnesses to corner location:

W. Jung

B. Rasmussen



(Double blazed with N&C set)

14" Pine



N 60° 10' W
551.0'

capped iron pipe

S 81° 45' E
20.0'

stump

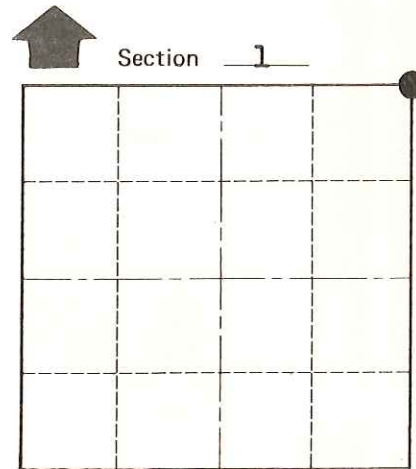
(All bearings shown are Magnetic)

S 47° 55' E
49.47'

12" Oak

(Double blazed with N&C set)

North



O = LOCATION CORNER

T 19 N R 1 E

WISCONSIN

SURVEY CONTROL ORDER

Horizontal	_____
Vertical	_____

Approved by: Harley A. Sime
County Surveyor

WISCONSIN COORDINATE SYSTEM

Corner	East (X)	North (Y)	Elevation (Z)	Zone
Control Sta. Name				

City, Village or Town Scott

County of Monroe

COUNTY SURVEYOR FORM NO. 1