

#23

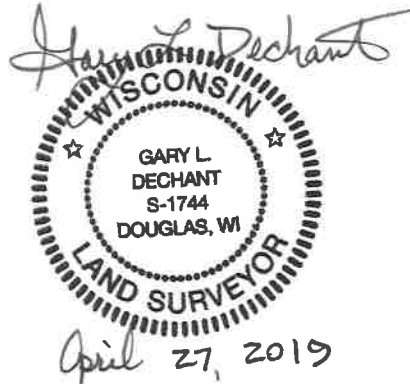
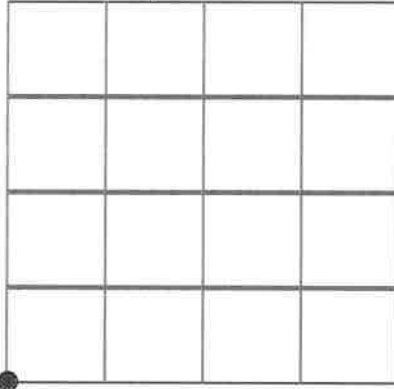
U.S. Public Land Survey Monument Record

Corner ID: SW Sec. 1, T19N-R1E

41901020000

Type of Monument: Set 1-1/8"x5' iron shaft

Sec. 1, T19N-R1E



County Coordinates:

Witnesses: Zachariah P. Dechant
Gary L. Dechant

Basis For Monument Location:

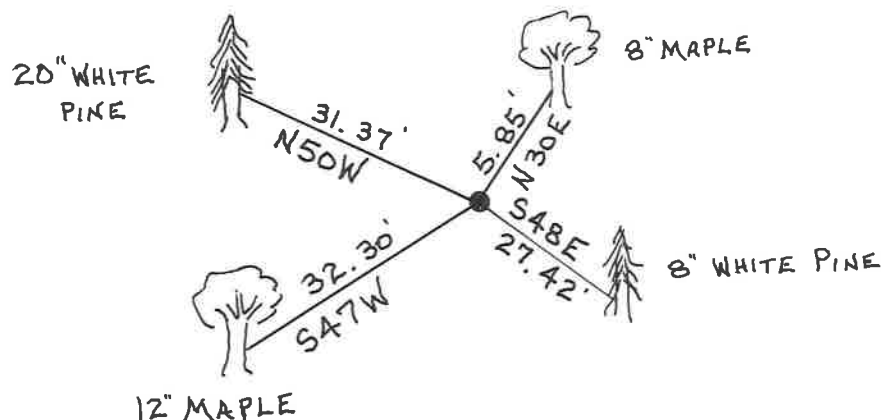
(Show info such as history, evidence, testimony, found or method of relocation)

Original Government corner established by George Cole in 1851.

Fred Holden was here in March of 1903 and shows he set an "iron angle bar". He was here again in September of 1903, makes no mention of the iron angle bar, instead a bearing tree: W Pine 5 S40E 24.

We searched twice and found no monument. We did find bits and pieces of barb wire, the remains of a pine with wire. Even though it was not a distinct corner, we accepted the spot of found wire as the corner as it fits distances in all four directions within a few feet or less.

Blazed and set railroad spikes in bearing trees.



Set 1-1/8"x5' iron shaft
Set survey sign 2' east
Falls in wooded swampy ground.