

22

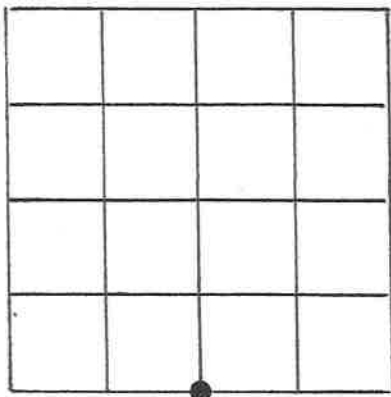
U.S. Public Land Survey Monument Record

Corner ID: 41901010020

S1/4 Sec. 1, T19N-R1E

Type of Monument: HARRISON

S1/4 SEC. 1 T19N-R1E



I certify that the U.S. Public Land Survey Monument Record is correct and complete to the best of my knowledge and belief.



September 2, 2019

County Coordinates:

Witnesses: ZACHARIAH P. DECHANT
GARY L. DECHANT

Basis for Monumentation Location:

(show info such as history, evidence, testimony, found or method of location)

Original Government Survey was performed by George Cole in November of 1851.

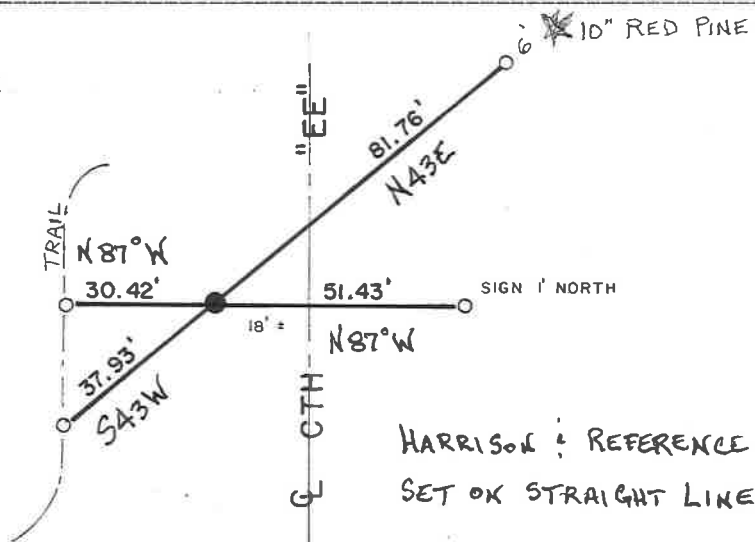
S. Kennedy was known to have surveyed in the Town of Scott in the 1930's-40's.

Town Road records indicated road to be set on quarter line. However, road was not constructed completely straight from corner to corner.

Found an unrecorded bent and leaning iron monument, down 22". Same type of marker as found at the S1/4 Section 28, a 1" square iron bar with 1 1/4" square top, 18' west of road.

Fits exceptionally well between section corners. Accepted and replaced with a Cast Iron TCP Monument.

○ = SET 1-1/4" x 2" IRON PIPE



HARRISON : REFERENCE MARKERS
SET ON STRAIGHT LINES.