

# JACKSON COUNTY - U.S. PUBLIC LAND SURVEY MONUMENT RECORD

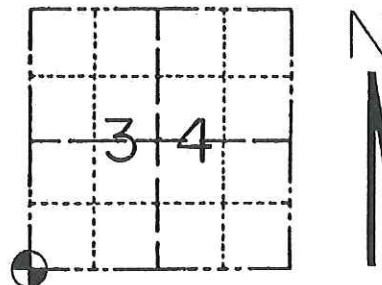
# 7

TYPE OF MONUMENT 2" X 40" Brass Capped Pipe  
 REFERENCED FOR SURVEY RECORDED IN CSM# \_\_\_\_\_ or CSR# \_\_\_\_\_  
 SURVEYOR'S FILE # or PROJECT # 202-D  
 DRAWN BY Aaron Stockwell

CORNER VOL. 10, PAGE 1598  
 CORNER # 4 20 01 33 0000  
 SECTION 34, T. 20 N, R. 1E

**GEOGRAPHIC LOCATION:**

LATT: 44° 09' 27.55826 " N COUNTY COORDINATE SYSTEM  
 (TO BE ASSIGNED BY COUNTY)  
 LONG: 90° 22' 22.42139 " W  
 N = 47493.5565 \*  
 ELLIPSOID HEIGHT \_\_\_\_\_ m \_\_\_\_\_ ft.  
 ORTHO HEIGHT \_\_\_\_\_ m \_\_\_\_\_ ft.  
 E = 212304.0948  
 Estimated height accuracy ± \_\_\_\_\_ -EDR 11/13/2015



LOCATION  
 (INDICATE W/ MONUMENT SYMBOL)

**BASIS FOR MONUMENT LOCATION**

Please describe if this is a found, obliterated or lost corner. Give a complete history of the corner listing the vol. & page, dates, surveyor and description of found monument. Please list all parole testimony and who provided it as well as other witness' of recovery. Please describe the best way to reach this corner. Indicate how obstructed this monument might be for GPS observations. Continue on backside if necessary.

March 10, 1938, Kennedy was at this corner and set a capped pipe 42.9' (.65 chains) west of Dandy Creek ditch at the corner. July 10, 1974, D.A. Marten, from H.A. Sime and Associates, was at this corner in an unrecorded survey and set a 1 1/4" iron bar 1/2 way between the west 1/4 cor. and the southwest cor. sec. 34. In 1982, W.C. Jung, from H.A. Sime and Associates states in his field notes that Mrs. Callaway told him that the corner had been knocked out. In 1997, L.A. Fedderson was here and apparently found and used a capped pipe standing in the ditch as shown in the tie sketch. February 17, 1998, G.L. Dechant was at this corner from a survey 1 mile south. He referenced the capped pipe and drew a certified land corner sheet.

We measured to this capped pipe and found that it did not fit measurements 1/2 mile north, 1/2 mile east and 1/2 mile west. We contacted Jackson County Surveyor J.T. Ellingson and he contacted Monroe County Surveyor G.A. Sime about the corner being moved. We decided

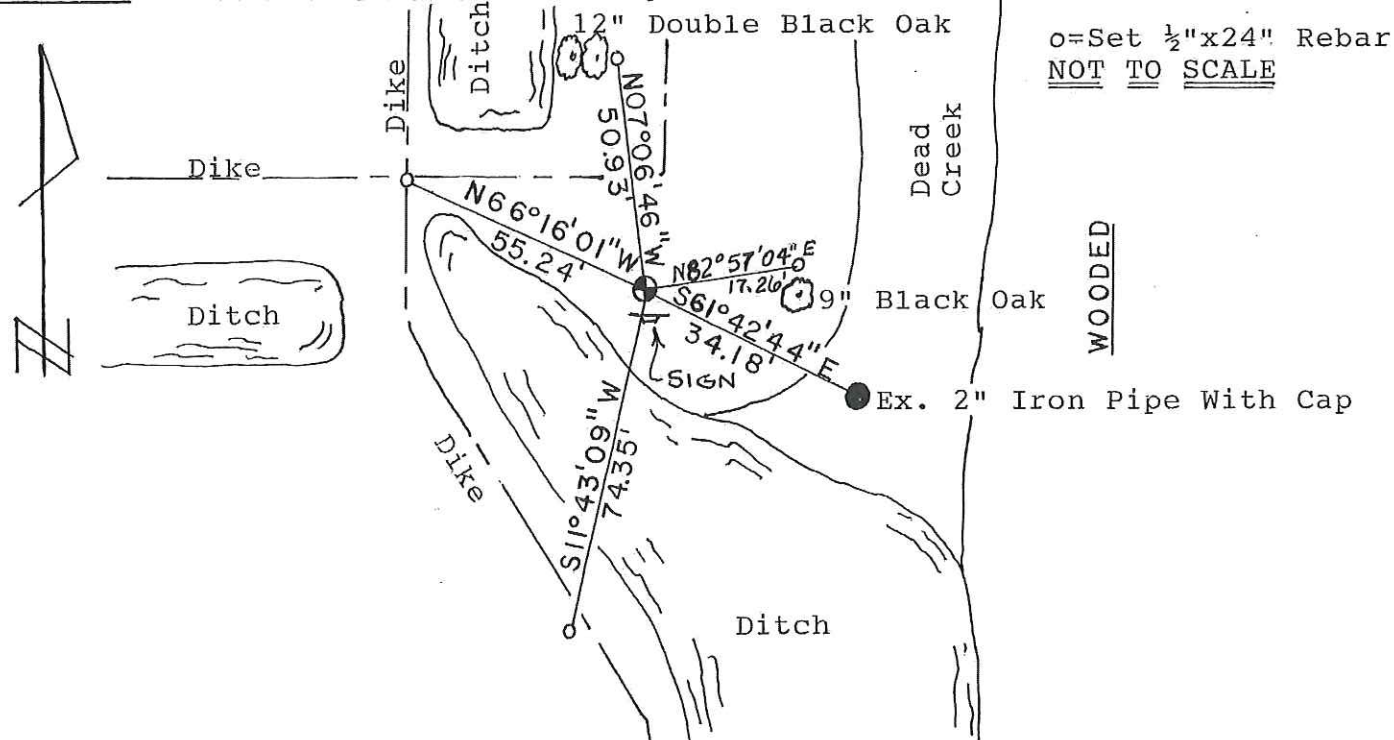
(Continued on back)

SEAL:

CERTIFIED CORRECT AND COMPLETE TO THE BEST OF MY KNOWLEDGE AND BELIEF:

*Timothy J. Jeatran*  
 Registered Land Surveyor  
 DATE: 12-15-99

**TIE SKETCH** Show at least four ties. Show fence lines-roads-topo features-size and type of witness trees-trails if available.



# 7



# 7

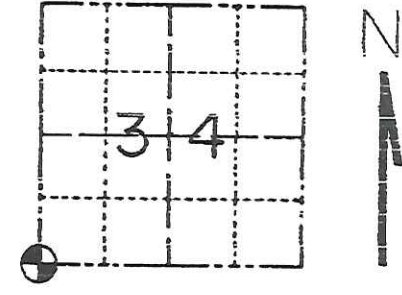
### JACKSON COUNTY - U.S. PUBLIC LAND SURVEY MONUMENT RECORD

TYPE OF MONUMENT 2"X40" Brass Capped Pipe  
 REFERENCED FOR SURVEY RECORDED IN CSM# \_\_\_\_\_ or CSR# \_\_\_\_\_  
 SURVEYOR'S FILE # or PROJECT # 202-D  
 DRAWN BY Aaron Stockwell

CORNER VOL. \_\_\_\_\_ PAGE \_\_\_\_\_  
 CORNER # \_\_\_\_\_  
 SECTION 34 T. 20 N. R. 1E

#### GEOGRAPHIC LOCATION:

LATT: \_\_\_\_\_ ° \_\_\_\_\_ ' \_\_\_\_\_ " COUNTY COORDINATE SYSTEM  
 (TO BE ASSIGNED BY COUNTY)  
 LONG: \_\_\_\_\_ ° \_\_\_\_\_ ' \_\_\_\_\_ " N = \_\_\_\_\_  
 ELLIPSOID HEIGHT \_\_\_\_\_ m \_\_\_\_\_ ft. E = \_\_\_\_\_  
 ORTHO HEIGHT \_\_\_\_\_ m \_\_\_\_\_ ft.  
 Estimated height accuracy ± \_\_\_\_\_



LOCATION  
 (INDICATE W/ MONUMENT SYMBOL)

#### BASIS FOR MONUMENT LOCATION

Please describe if this is a found, obliterated or lost corner. Give a complete history of the corner listing the vol. & page, dates, surveyor and description of found monument. Please list all parole testimony and who provided it as well as other witness' of recovery. Please describe the best way to reach this corner. Indicate how obstructed this monument might be for GPS observations. Continue on backside if necessary.

March 10, 1938, Kennedy was at this corner and set a capped pipe 42.9' (.65 chains) west of Dandy Creek ditch at the corner. July 10, 1974, D.A. Marten, from H.A. Sime and Associates, was at this corner in an unrecorded survey and set a 1 1/4" iron bar 1/2 way between the west 1/4 cor. and the southwest cor. sec. 34. In 1982, W.C. Jung, from H.A. Sime and Associates states in his field notes that Mrs. Callaway told him that the corner had been knocked out. In 1997, L.A. Fedderson was here and apparently found and used a capped pipe standing in the ditch as shown in the tie sketch. February 17, 1998, G.L. Dechant was at this corner from a survey 1 mile south. He referenced the capped pipe and drew a certified land corner sheet.

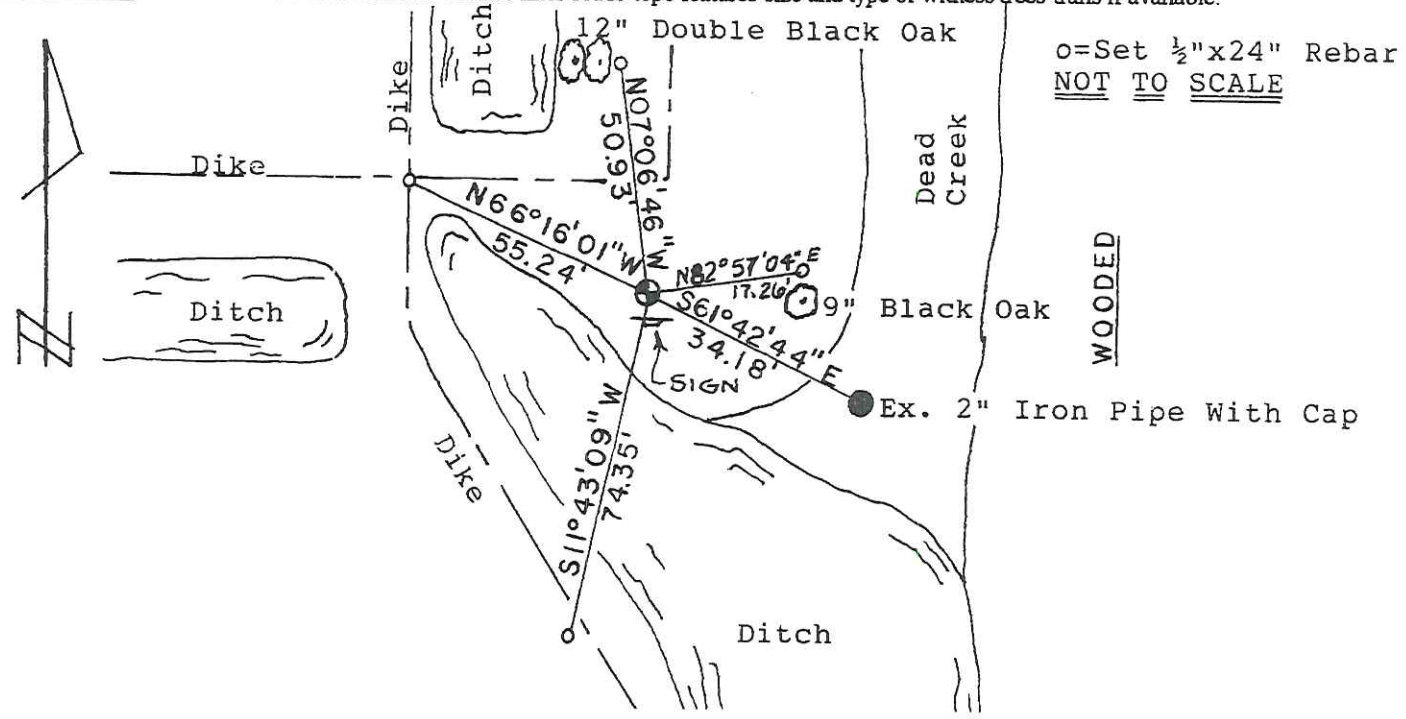
We measured to this capped pipe and found that it did not fit measurements 1/2 mile north, 1/2 mile east and 1/2 mile west. We contacted Jackson County Surveyor J.T. Ellingson and he contacted Monroe County Surveyor G.A. Sime about the corner being moved. We decided

SEAL:

CERTIFIED CORRECT AND COMPLETE TO THE BEST OF MY KNOWLEDGE AND BELIEF:

*Timothy J. Jeatran*  
 Registered Land Surveyor  
 DATE: 12-15-99

#### TIE SKETCH Show at least four ties. Show fence lines-roads-topo features-size and type of witness trees-trails if available.



42001330000

7

I, Gary L. Dechant, do hereby certify that on the 7th day of February 1998, I found (evidence) (~~no evidence~~) of the NE corner of Section 3, T19 N, R 1 E Fourth Principal Meridian, and I re-established said corner according to the Wisconsin Statutes as shown and described hereon.

Dated this 17th day of Feb. 1998.

Gary L. Dechant  
Registered Land Surveyor-1744  
Title

History of corner establishment since Original Government Survey

Kennedy was known to be in this area in the 1930's.

Description of corner evidence found:

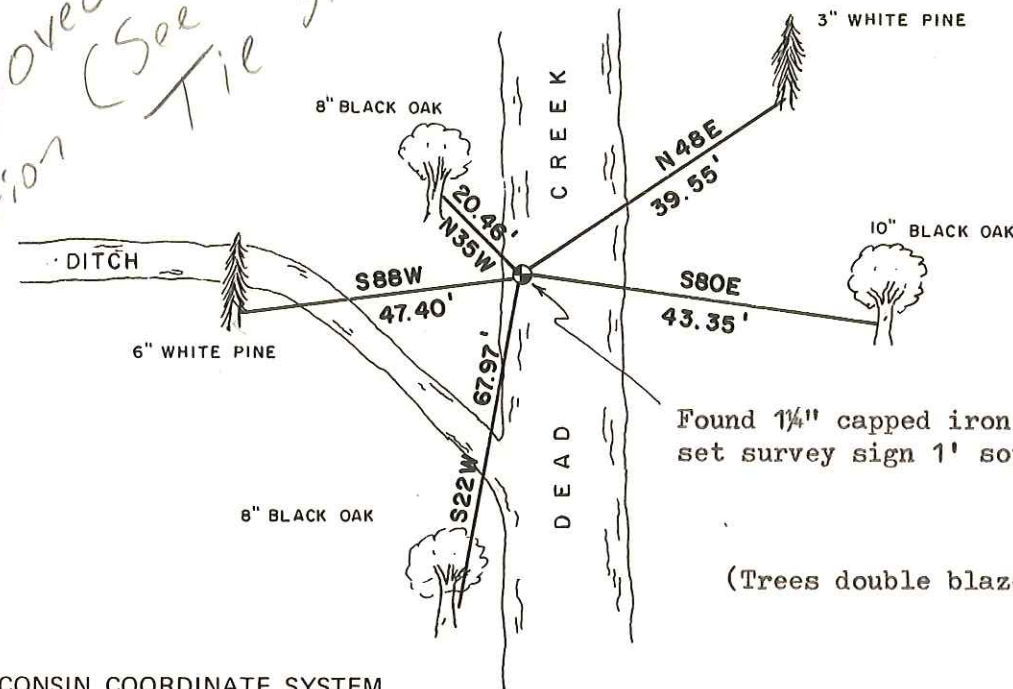
Found a 1 1/4" capped iron pipe stamped with Kennedy's initials. Falls on the west side of Dead Creek.

Description of corner and witness monuments, references and accessories used to perpetuate the original or re-established location of this corner:

Witnesses to corner location:

David E. Madison  
Gary L. Dechant  
Zachariah P. Dechant

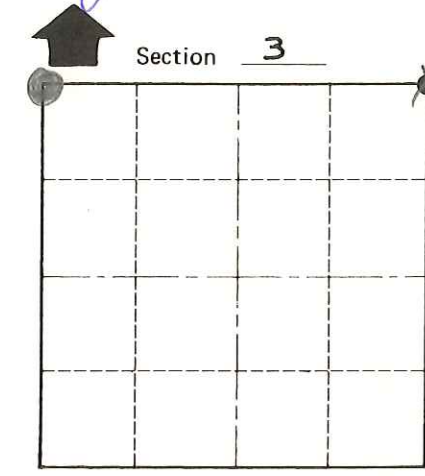
*Been moved to previous location (See Tim Seatran Tie sheet)*



Found 1 1/4" capped iron pipe set survey sign 1' south.

(Trees double blazed with 40d nail set)

42001330000  
Gary L. Dechant  
WISCONSIN  
GARY L. DECHANT  
S-1744  
CAMP DOUGLAS, WI  
LAND SURVEYOR  
February 17, 1998



● = LOCATION CORNER  
T 19 N R 1 E  
WISCONSIN

SURVEY CONTROL ORDER

Horizontal \_\_\_\_\_  
Vertical \_\_\_\_\_

WISCONSIN COORDINATE SYSTEM

| Corner            | East (X) | North (Y) | Elevation (Z) | Zone |
|-------------------|----------|-----------|---------------|------|
| Control Sta. Name |          |           |               |      |

City, Village or Town SCOTT  
County of MONROE

COUNTY SURVEYOR FORM NO. 1