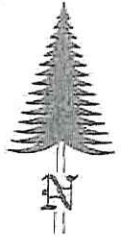


# JACKSON COUNTY - U.S. PUBLIC LAND SURVEY MONUMENT RECORD

TYPE OF MONUMENT: Wagon Thimble  
 REFERENCED FOR SURVEY RECORDED IN CSM# \_\_\_\_\_ OR CSR# \_\_\_\_\_  
 SURVEYOR'S FILE# OR PROJECT# Fieldbook: T20N-R1E, Pg. 20 - 21  
 DRAWN BY: Ethan Remus  
 WITNESS: Ethan Remus

CORNER VOL. 11, PAGE 1712  
 CORNER# 42001320020  
 SECTION 32, T 20 N, R 1E # 10  
 S1/4 CORNER

GEOGRAPHIC LOCATION: NAD 83 (91) WISCRS- Jackson County  
 COUNTY COORDINATE SYSTEM  
 (TO BE ASSIGNED BY COUNTY)  
 LATT: 44°09'32.73533" N  
 LONG: 90°24'09.84837" W  
 N = 47974.3572  
 E = 204469.4092



LOCATION  
 (INDICATE W/ MONUMENT SYMBOL)

## BASIS FOR MONUMENT LOCATION:

Please describe if this is a found, obliterated or lost corner. Give a complete history of the corner listing the vol & page, dates, surveyor and description of found monument. Please list all parole testimony and who provided it as well as other witness of recovery. Please describe the best way to reach this corner. Indicate how obstructed this monument might be for GPS observations. Continue on backside if necessary.

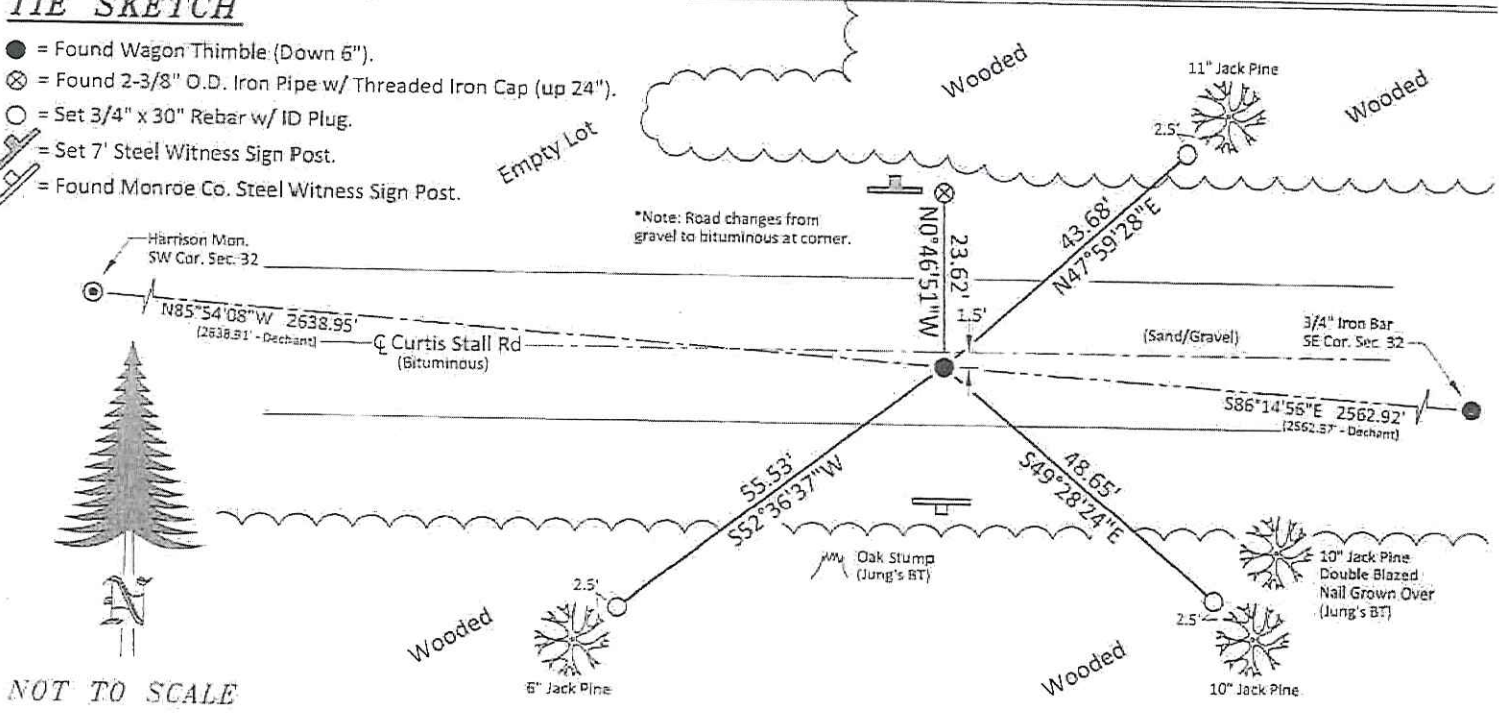
- \* George Stuntz and James Sargent set a post for the quarter corner as part of the original Township Line survey in 1851. They referenced two bearing trees, a 12" Black Pine N62°W - 17.16', and a 8" Black Pine S5°E - 7.26'.
- \* C.M. Keach was at this corner in 1899. He records that residents showed him a stump from a Gov't bearing tree with old scribing plain. He reestablished the corner from this stump and set a wagon thimble. (CSR No. 263 in Vol. 2 on Pg. 6) also (Vol. 17 on Pg. 209)
- \* S.L. Kennedy was at this corner in 1937. His notes indicate that he found an iron in the road with a fence running North. (Kennedy's Fieldbook No. 25 on Pg. 40)
- \* Bill Jung visited this corner in 1980. He found Keach's wagon thimble in the centerline of a road, down 10", with a glass bottle next to it. He also found a capped iron pipe from Kennedy to the North, set as a witness to the corner, up 27". He referenced the corner to two bearing trees. (See previous tie sheet)
- \* In November of 2015, I found Keach's wagon thimble near the centerline of a road, down 6". The thimble was still in excellent condition. I found Kennedy's standard pipe (2-3/8" O.D. iron pipe w/ threaded on iron cap) set as a witness to the North, up 24" and leaning NEly. I found Jung's bearing trees as depicted below. I found a Monroe Co. witness sign post about 18' South of the corner. I accepted Keach's wagon thimble as the quarter corner. I plumbed Kennedy's North witness pipe and drove a 7' steel witness sign post 1' West. I drove three rebar for references as depicted below. The corner is open for GPS.

CERTIFIED CORRECT AND COMPLETE  
 TO THE BEST OF MY KNOWLEDGE  
 AND BELIEF:

*Ethan Remus*  
 Professional Land Surveyor  
 DATE: March 15, 2016

## TIE SKETCH

- = Found Wagon Thimble (Down 6").
- ⊗ = Found 2-3/8" O.D. Iron Pipe w/ Threaded Iron Cap (up 24").
- = Set 3/4" x 30" Rebar w/ ID Plug.
- ≡ = Set 7' Steel Witness Sign Post.
- ≡ = Found Monroe Co. Steel Witness Sign Post.



42001320020

I, William C. Jung, do hereby certify that on the 21st day of July 1980, I found (evidence) ~~(no evidence)~~ of the North 1/4 corner of Section 5, T 19 N, R 1 E Fourth Principal Meridian, and I re-established said corner according to the Wisconsin Statutes as shown and described hereon.

Dated this 12th day of Feb. 1981.

William C. Jung  
William C. Jung, R.L.S. 1323  
Title

History of corner establishment since Original Government Survey

Keach set a wagon thimble at this corner in July of 1899. Kennedy found Keach's thimble in 1937 and set a reference pipe to the North. He also found a fence going to the North.

Description of corner evidence found:

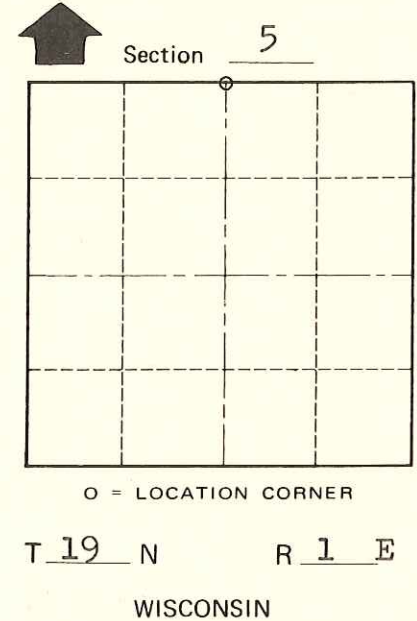
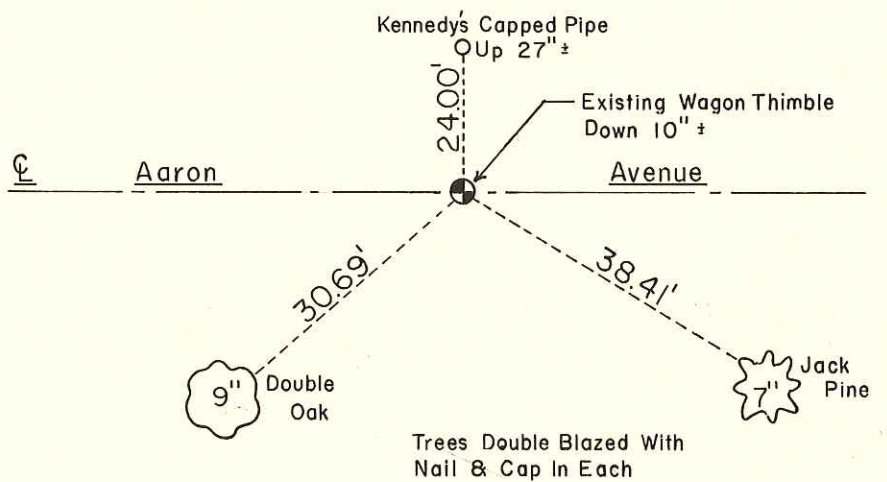
Found the wagon thimble set by Keach and Kennedy's reference pipe to the North. I also found a glass bottle by the thimble. I removed the bottle.

Approved: **HARLEY A. SIME**  
**MONROE CO. SURVEYOR**

Description of corner and witness monuments, references and accessories used to perpetuate the original or re-established location of this corner:

Witnesses to corner location:

W. Jung  
C. Pietz  
C. Dade



SURVEY CONTROL ORDER

|            |       |
|------------|-------|
| Horizontal | _____ |
| Vertical   | _____ |

WISCONSIN COORDINATE SYSTEM

| Corner            | East (X) | North (Y) | Elevation (Z) | Zone |
|-------------------|----------|-----------|---------------|------|
| Control Sta. Name |          |           |               |      |

*SIGN PLACED 12/24/86*  
*Kennosky, Wilhite*

City, Village or Town Scott  
County of Monroe  
Wisconsin

COUNTY SURVEYOR FORM NO. 1