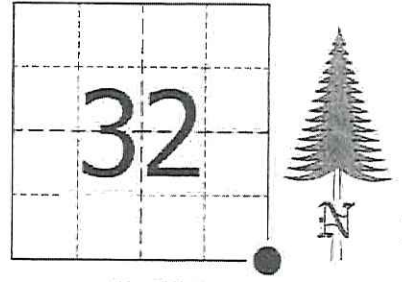


# JACKSON COUNTY - U.S. PUBLIC LAND SURVEY MONUMENT RECORD

TYPE OF MONUMENT: 3/4" Round Iron Bar w/ ID Plug  
 REFERENCED FOR SURVEY RECORDED IN CSM# \_\_\_\_\_ OR CSR# \_\_\_\_\_  
 SURVEYOR'S FILE# OR PROJECT# Fieldbook: T20N-R1E, Pg. 18 - 19  
 DRAWN BY: Ethan Remus  
 WITNESS: Ethan Remus

CORNER VOL. 11, PAGE 1806  
 CORNER# 42001320000  
 SECTION 32, T 20 N, R 1E # 9  
 SE CORNER

GEOGRAPHIC LOCATION: NAD 83 (91) WISCRS- Jackson County  
 COUNTY COORDINATE SYSTEM  
 (TO BE ASSIGNED BY COUNTY)  
 LATT: 44°09'30.94257" N  
 LONG: 90°23'34.78185" W  
 N = 47806.6855  
 E = 207026.8372



LOCATION  
 (INDICATE W/ MONUMENT SYMBOL)

## BASIS FOR MONUMENT LOCATION:

Please describe if this is a found, obliterated or lost corner. Give a complete history of the corner listing the vol. & page, dates, surveyor and description of found monument. Please list all parole testimony and who provided it as well as other witness' of recovery. Please describe the best way to reach this corner. Indicate how obstructed this monument might be for GPS observations. Continue on backside if necessary.

\* George Stuntz and James Sargent set a post for the section corner as part of the original Township Line survey in 1851. They referenced four bearing trees, a 16" Yellow Pine N45°W - 17.16', a 14" Black Pine N15°E - 21.12', a 12" Yellow Pine S32°E - 1.98', and a 16" Yellow Pine S35°W - 10.56'.

\* C.M. Keach was at this corner in 1899. He records finding one stump and the roots of three others that fit the calls from the Gov't survey for bearing trees. He also found the bottom of a large stake at the right distance and direction from these trees. He set a stone, 21" x 10" x 10", for the corner. (CSR No. 263 in Vol. 2 on Pg. 6)

\* S.L. Kennedy was at this corner in 1937. His notes indicate that he found a stone in the South track of a road with a fence running North. (Kennedy's Fieldbook No. 25 on Pg. 40)

\* Bill Jung visited this corner in 1980. He found Keach's stone just under the road surface, and a pipe set by Kennedy as a reference to the North, up 30". He set a 3/4" x 24" iron bar on the South side of Keach's stone to aid in locating it. He referenced it to two bearing trees. (See previous tie sheet)

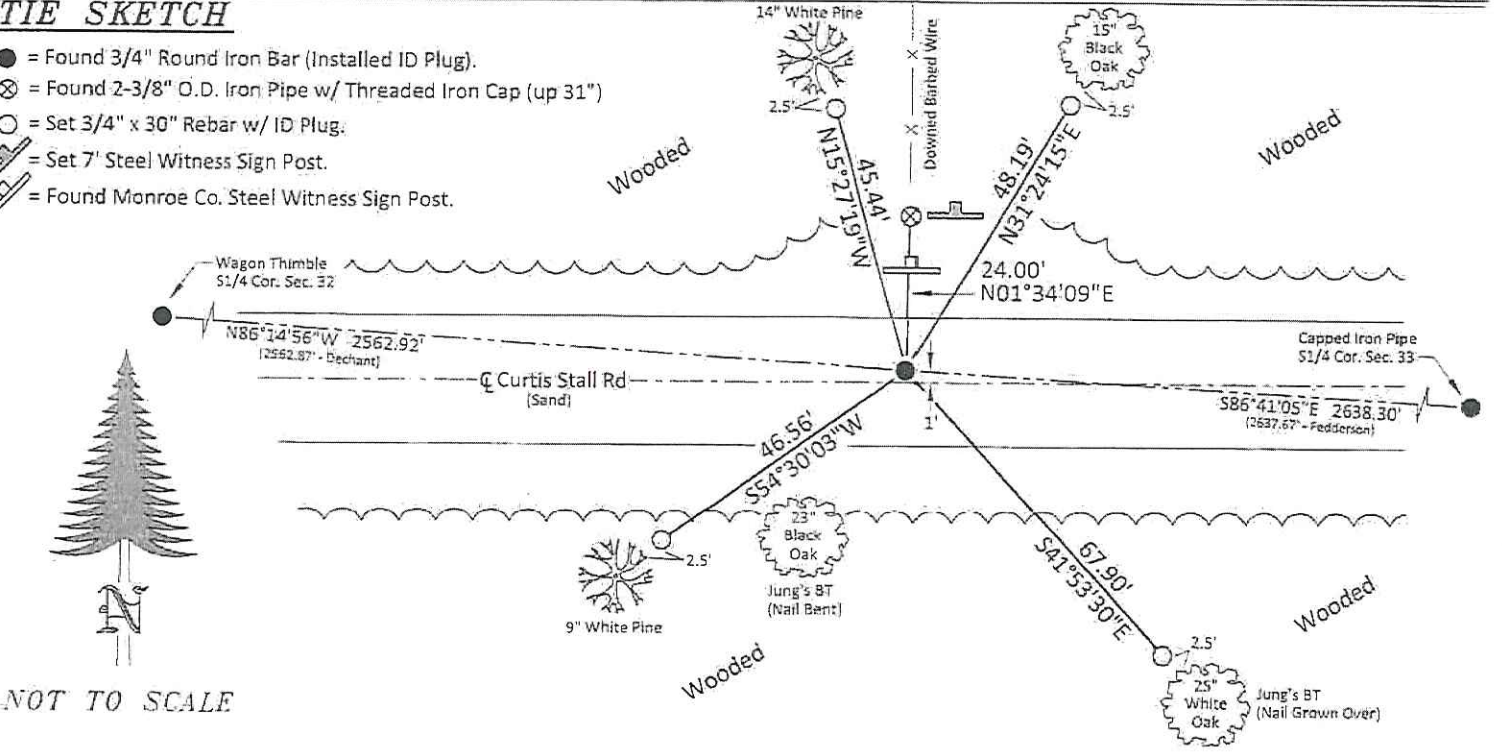
\* Tim Jeatran was at this corner in 2006 and found Keach's stone broken. He replaced it with a 3/4" x 24" round iron bar using the references established by Bill Jung in 1980. (CSR No. 2890 in Vol. 7 on Pg. 573)

\* In November of 2015, I found Jeatran's 3/4" round iron bar near the centerline of a sand road down 2-1/2". I found Kennedy's standard pipe (2-3/8" O.D. iron pipe w/ threaded on iron cap) North of corner, up 31" and leaning NWly. There was broken pieces of stone around this pipe, possibly the broken corner stone. I found Jung's bearing trees as depicted below. The line North from the corner has been brushed with steel T-Posts painted orange set periodically, these appear to be set on the section line. There is also old downed barbed wire running North from the corner. I accepted Jeatran's iron bar as the section corner. I drove it down to 12" below the road surface and installed an ID plug on top. I plumbed Kennedy's North witness pipe and drove a steel witness sign post 1' East. There is an existing Monroe Co. witness sign about 4' South of this pipe. I drove four rebar for references as depicted below. The corner is open for GPS.

CERTIFIED CORRECT AND COMPLETE  
 TO THE BEST OF MY KNOWLEDGE  
 AND BELIEF:  
*Ethan Remus*  
 Professional Land Surveyor  
 DATE: March 15, 2016

## TIE SKETCH

- = Found 3/4" Round Iron Bar (Installed ID Plug).
- ⊗ = Found 2-3/8" O.D. Iron Pipe w/ Threaded Iron Cap (up 31")
- = Set 3/4" x 30" Rebar w/ ID Plug.
- ⊥ = Set 7' Steel Witness Sign Post.
- ⊥ = Found Monroe Co. Steel Witness Sign Post.



NOT TO SCALE

CERTIFICATE

CERTIFIED LAND CORNER

No. 9

42001320000

I, William C. Jung, do hereby certify that on the 22nd day of July 1980, I found (evidence) ~~(no evidence)~~ of the Northeast corner of Section 5, T19 N, R 1 E Fourth Principal Meridian, and I re-established said corner according to the Wisconsin Statutes as shown and described hereon.

Dated this 12th day of Feb. 1981.

*William C. Jung*

William C. Jung, R.L.S. 1323  
Title

History of corner establishment since Original Government Survey

Keach set a 21"x10"x10" stone at this corner in July of 1899. Kennedy found Keach's stone in 1937 and set a reference pipe to the North. He also found a fence going to the North.

Description of corner evidence found:

Found the stone set by Keach and Kennedy's reference pipe to the North. The stone was found just under the road surface. Set a 3/4"x24" iron bar on the South side of the stone as a witness point.

Approved: **HARLEY A. SIME**  
**MONROE CO. SURVEYOR**

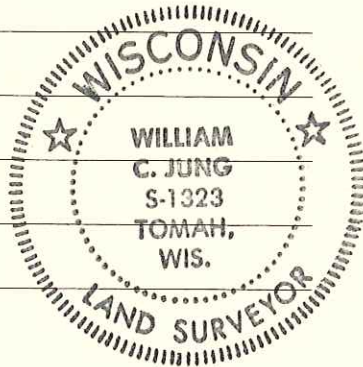
Description of corner and witness monuments, references and accessories used to perpetuate the original or re-established location of this corner:

Witnesses to corner location:

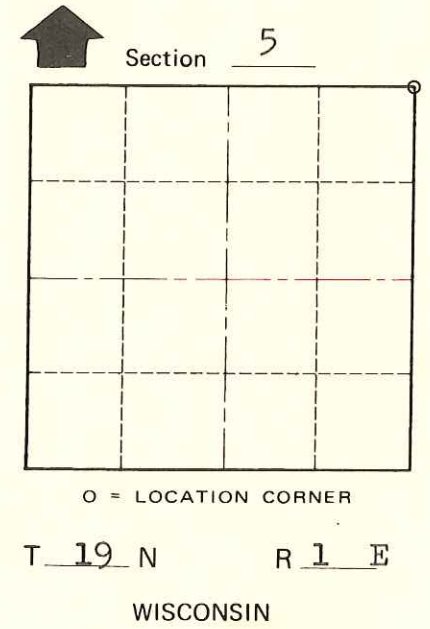
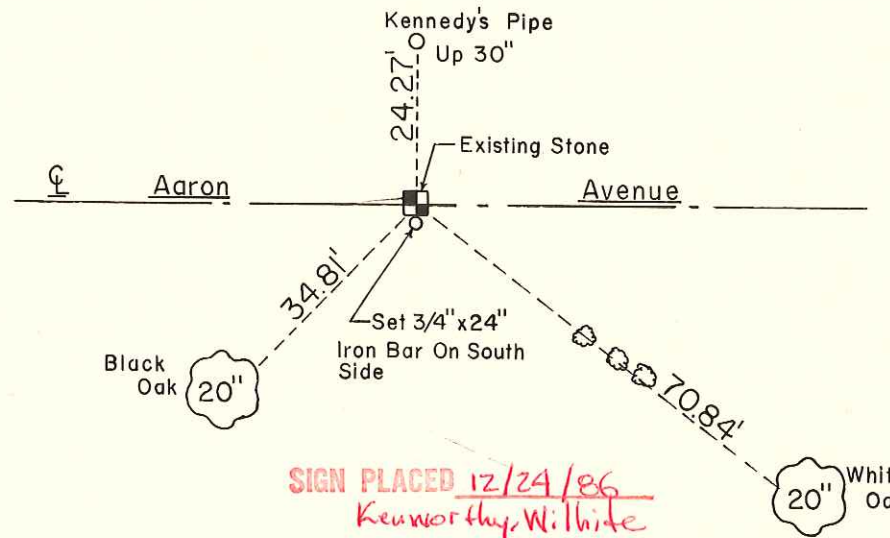
W. Jung

C. Pietz

C. Dade



Trees Double Blazed With Nail & Cap Set



SURVEY CONTROL ORDER

Horizontal	_____
Vertical	_____

WISCONSIN COORDINATE SYSTEM

Corner	East (X)	North (Y)	Elevation (Z)	Zone
Control Sta. Name				

City, Village or Town Scott  
County of Monroe  
Wisconsin

COUNTY SURVEYOR FORM NO. 1