

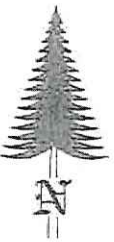
# JACKSON COUNTY - U.S. PUBLIC LAND SURVEY MONUMENT RECORD

TYPE OF MONUMENT: 2-3/8" O.D. x 36" Brass Capped Iron Pipe  
 REFERENCED FOR SURVEY RECORDED IN CSM# \_\_\_\_\_ OR CSR# \_\_\_\_\_  
 SURVEYOR'S FILE# OR PROJECT# Fieldbook: T20N-R1E, Pg. 26 - 27  
 DRAWN BY: Ethan Remus  
 WITNESS: Ethan Remus

CORNER VOL. 11, PAGE 1808  
 CORNER# 42001310020  
 SECTION 31, T 20 N, R 1E  
 S1/4 CORNER

#12

GEOGRAPHIC LOCATION: NAD 83 (91) WISCRS- Jackson County  
 COUNTY COORDINATE SYSTEM  
 (TO BE ASSIGNED BY COUNTY).  
 LATT: 44°09'36.77052" N  
 LONG: 90°25'21.98451" W  
 N = 48355.3983  
 E = 199208.4199



LOCATION

(INDICATE W/ MONUMENT SYMBOL)

## BASIS FOR MONUMENT LOCATION:

Please describe if this is a found, obliterated or lost corner. Give a complete history of the corner listing the vol. & page, dates, surveyor and description of found monument. Please list all parole testimony and who provided it as well as other witness' of recovery. Please describe the best way to reach this corner. Indicate how obstructed this monument might be for GPS observations. Continue on backside if necessary.

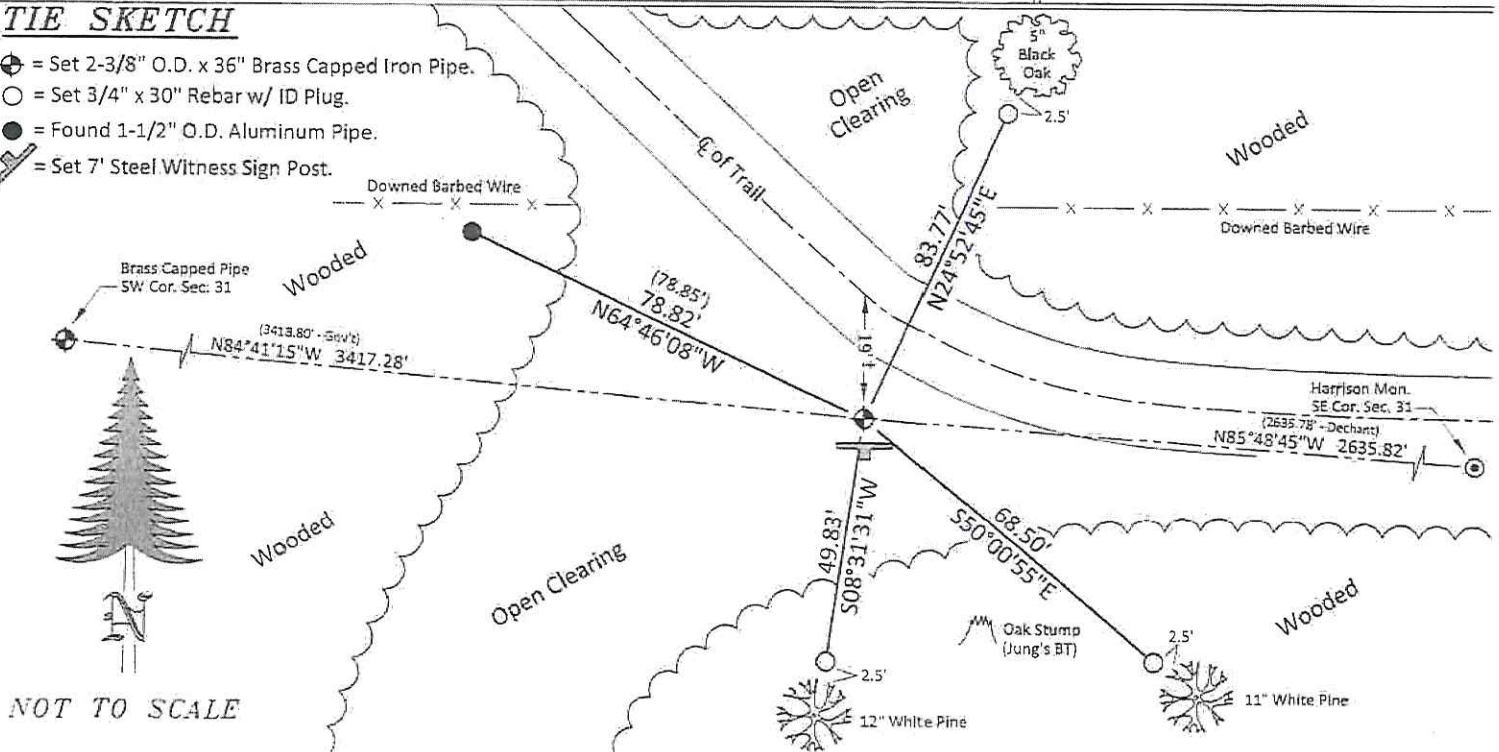
- \* George Stuntz and James Sargent set a post for the quarter corner as part of the original Township Line survey in 1851. They referenced two bearing trees, a 16" Yellow Pine N48°W - 17.16', and a 16" White Pine S62°30'W - 7.92'.
- \* C.M. Keach used this corner in 1899 to reestablish the section corner to the East. He identified it from the stumps of both marked bearing trees. (Vol. 17 on Pg. 209) Keach used this corner again in 1901 and set a 3' long gas pipe for the corner. (CSR No. 328 in Vol. 2 on Pg. 71)
- \* S.L. Kennedy was at this corner in 1937. His notes are not very specific about this corner. It appears he found a pipe. (Fieldbook No. 25 on Pg. 42)
- \* Bill Jung visited this corner in 1982. He found a 1-1/2" x 36" iron pipe which he believed to be from Keach. He replaced this pipe with a cast iron Harrison monument, up 1" above the ground, and drove a 4" oak post, 5" South. Jung also found a 2" aluminum pipe near a downed fence, about 79' NWly. He referenced this to the corner along with three bearing trees. (See previous tie sheet)
- \* In November of 2015, I found Jung's Harrison monument with the top 6" snapped off and leaning SEly. I did not find the wood post he had set next to it. I found a 1-1/2" aluminum pipe in good condition to the NW that Jung had referenced to the corner. I found the stump of Jung's SE bearing tree but his NE and W bearing trees had been grubbed out. I measured from the center of the remainder of the broken Harrison. This fit within 0.03' to Jung's NW reference pipe and 0.02' to Gary Dechant's record measurement to the section corner East. I referenced the center of the broken Harrison, removed it and replaced it with a 2-3/8" O.D. x 36" brass capped iron pipe, driven down flush. I drove a 7' steel witness sign post 1' South and laid the broken Harrison flat on the North side of it. I drove three rebar for additional references as depicted below. The corner is open for GPS and can be accessed by truck, driving trails running South from the Beltz/Gebhardt cranberry marsh. The corner could also be easily accessed from the South, but there is a locked gate across the trail owned by an absentee landowner.

CERTIFIED CORRECT AND COMPLETE  
 TO THE BEST OF MY KNOWLEDGE  
 AND BELIEF:

*Ethan Remus*  
 Professional Land Surveyor  
 DATE: March 15, 2016

## TIE SKETCH

- ⊕ = Set 2-3/8" O.D. x 36" Brass Capped Iron Pipe.
- = Set 3/4" x 30" Rebar w/ ID Plug.
- = Found 1-1/2" O.D. Aluminum Pipe.
- ⚡ = Set 7' Steel Witness Sign Post.



NOT TO SCALE



42001310020

I, William C. Jung, do hereby certify that on the 27<sup>th</sup> day of December 1982, I found (evidence) ~~the evidence~~ of the North 1/4 corner of Section 6, T 19 N, R 1 E Fourth Principal Meridian, and I re-established said corner according to the Wisconsin Statutes as shown and described hereon.

Dated this 19<sup>th</sup> day of Jan. 1983.

William C. Jung

Deputy County Surveyor

Title

History of corner establishment since Original Government Survey

Keach (from Jackson County) was at this corner in July of 1899. In July of 1901, Keach set a 3' long gas pipe at this corner. In 1937 Kennedy apparently found Keach's pipe.

Description of corner evidence found:

Found a 1 1/2"x36" iron pipe. After measuring from the East, I am of the opinion that this is Keach's pipe. I removed this pipe and replaced it with a Harrison marker. The aluminum pipe that I found 29' North and 72' West is obviously in error.

COUNTY SURVEYOR FORM NO. 1

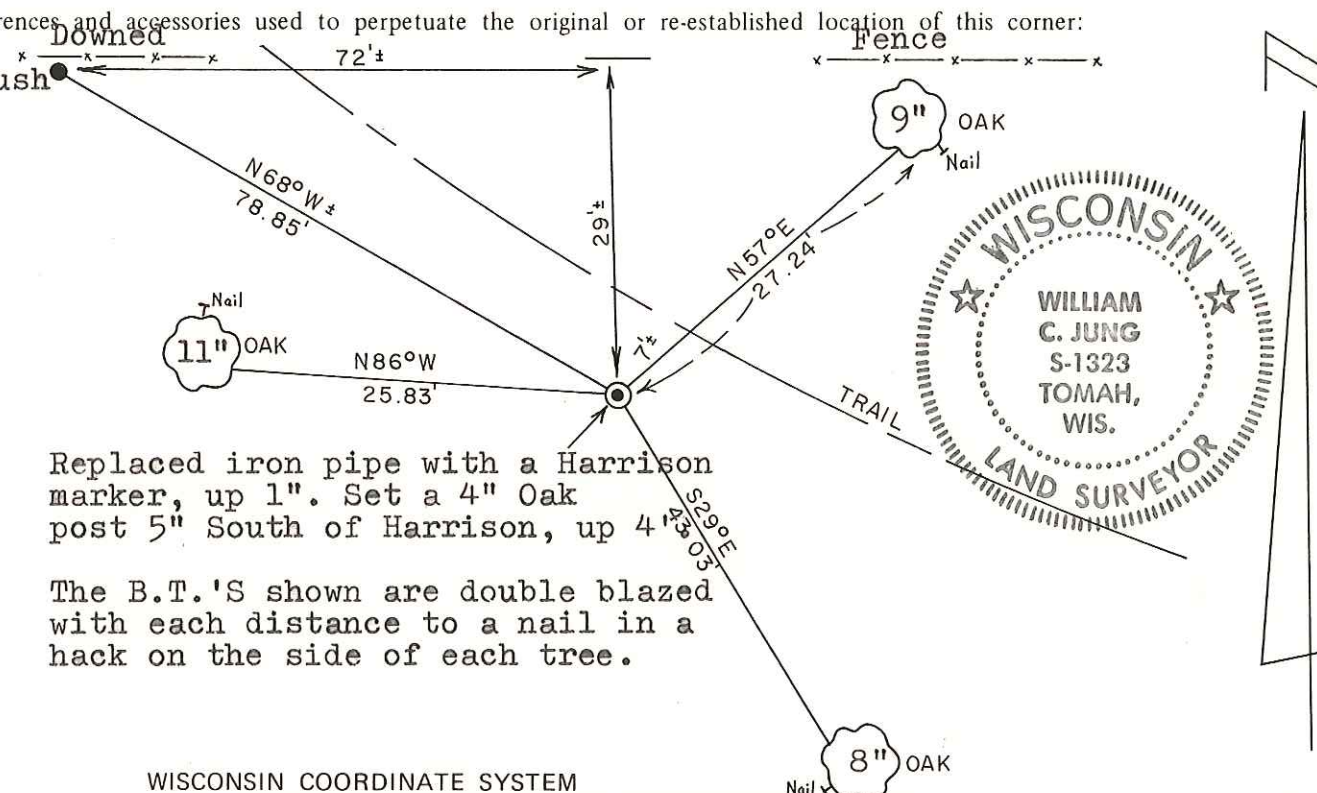
Description of corner and witness monuments, references and accessories used to perpetuate the original or re-established location of this corner:

Found 2" aluminum pipe, now flush

Witnesses to corner location:

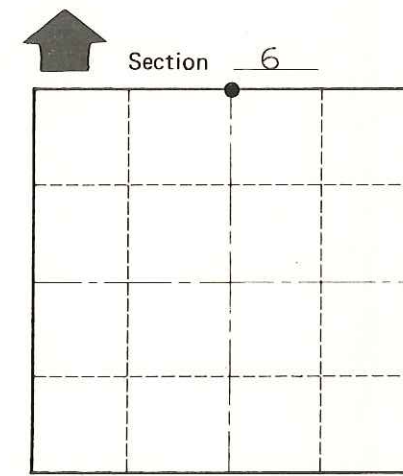
William C. Jung

Melvin Pliner



Replaced iron pipe with a Harrison marker, up 1". Set a 4" Oak post 5" South of Harrison, up 4" East of Harrison.

The B.T.'S shown are double blazed with each distance to a nail in a hack on the side of each tree.



● = LOCATION CORNER

T 19 N R 1 E  
WISCONSIN

Approved: **HARLEY A. SIME**  
**MONROE CO. SURVEYOR**

SURVEY CONTROL ORDER

|            |       |
|------------|-------|
| Horizontal | _____ |
| Vertical   | _____ |

WISCONSIN COORDINATE SYSTEM

| Corner            | East (X) | North (Y) | Elevation (Z) | Zone |
|-------------------|----------|-----------|---------------|------|
| Control Sta. Name |          |           |               |      |

~~City or Village of~~ Town of Scott

County of Monroe