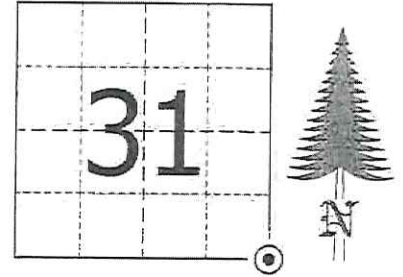


JACKSON COUNTY - U.S. PUBLIC LAND SURVEY MONUMENT RECORD

TYPE OF MONUMENT: Cast Iron Harrison Monument
 REFERENCED FOR SURVEY RECORDED IN CSM# _____ OR CSR# _____
 SURVEYOR'S FILE# OR PROJECT# Fieldbook: T20N-R1E, Pg. 22 - 23
 DRAWN BY: Ethan Remus
 WITNESS: Ethan Remus

CORNER VOL. 11, PAGE 1807
 CORNER# 42001310000
 SECTION 31, T 20 N, R 1E # 11
 SE CORNER

GEOGRAPHIC LOCATION: NAD 83 (91) WISCRS- Jackson County
 COUNTY COORDINATE SYSTEM
 (TO BE ASSIGNED BY COUNTY)
 LATT: 44°09'34.73541" N
 LONG: 90°24'45.93969" W
 N = 48162.9350
 E = 201837.2039



LOCATION
 (INDICATE W/ MONUMENT SYMBOL)

BASIS FOR MONUMENT LOCATION:

Please describe if this is a found, obliterated or lost corner. Give a complete history of the corner listing the vol. & page, dates, surveyor and description of found monument. Please list all parole testimony and who provided it as well as other witness of recovery. Please describe the best way to reach this corner. Indicate how obstructed this monument might be for GPS observations. Continue on backside if necessary.

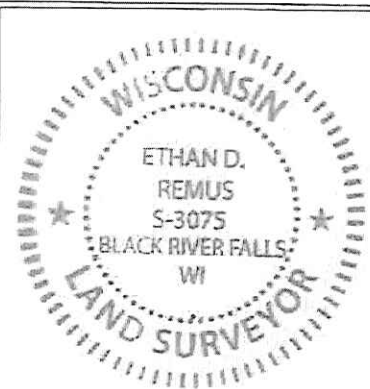
* George Stuntz and James Sargent set a post for the section corner as part of the original Township Line survey in 1851. They referenced four bearing trees, a 7" Black Pine N17°W - 7.26', a 8" Black Pine N55°E - 23.10', a 6" Black Pine S50°E - 15.18', and a 6" Black Pine S30°W - 4.62'.

* C.M. Keach was at this corner in 1899. He reestablished it by proportion between the quarter corners E-W and set a stake at the corner. He referenced a 8" Yellow Pine N32°E - 12.54' for a new bearing tree. (CSR No. 263 in Vol. 2 on Pg. 6) also (Vol. 17 on Pg. 209)

* S.L. Kennedy was at this corner in 1937. His notes dated April 9, 1937 indicate that he set a hub in the road for the corner with a witness pipe 24.75' North. He referenced three bearing trees to this corner. He notes the corner is 161.7' East of the center of a road running South, and that there was an old fence running West, West of the road. (Fieldbook No. 25 on Pg. 42) Kennedy returned to this corner on April 14, 1937. His notes indicate that a John Griffith (local resident) helped him find this corner, calling for an iron in the road. He notes that this iron is .02 South and .01 West (Chains?/Links?) of his previous monumented corner. (Fieldbook No. 25 on Pg. 46)

* Bill Jung visited this corner in 1982. He found a 3/4" x 22-1/2" square drive pin with a wagon thimble and accepted them as Keach's section corner. He also found one of Kennedy's old bearing trees. He removed the found irons and replaced them with a cast iron Harrison monument. He established four references to the corner. (See previous tie sheet)

* In November of 2015, I found Jung's Harrison monument in excellent condition, down 7" below the road surface, on the centerline. I found Jung's references as depicted below. I did not find evidence of Kennedy's bearing tree, it was likely grubbed out. I accepted the Harrison as the section corner and referenced it with Mag nails set 1' North and West. I drove three rebar for references and also tied into a 1-3/8" O.D. iron pipe set by Dechant in CSM 3278 on the R/W line. I drove a 7" steel witness sign post 1' East of this pipe. The corner is open for GPS.



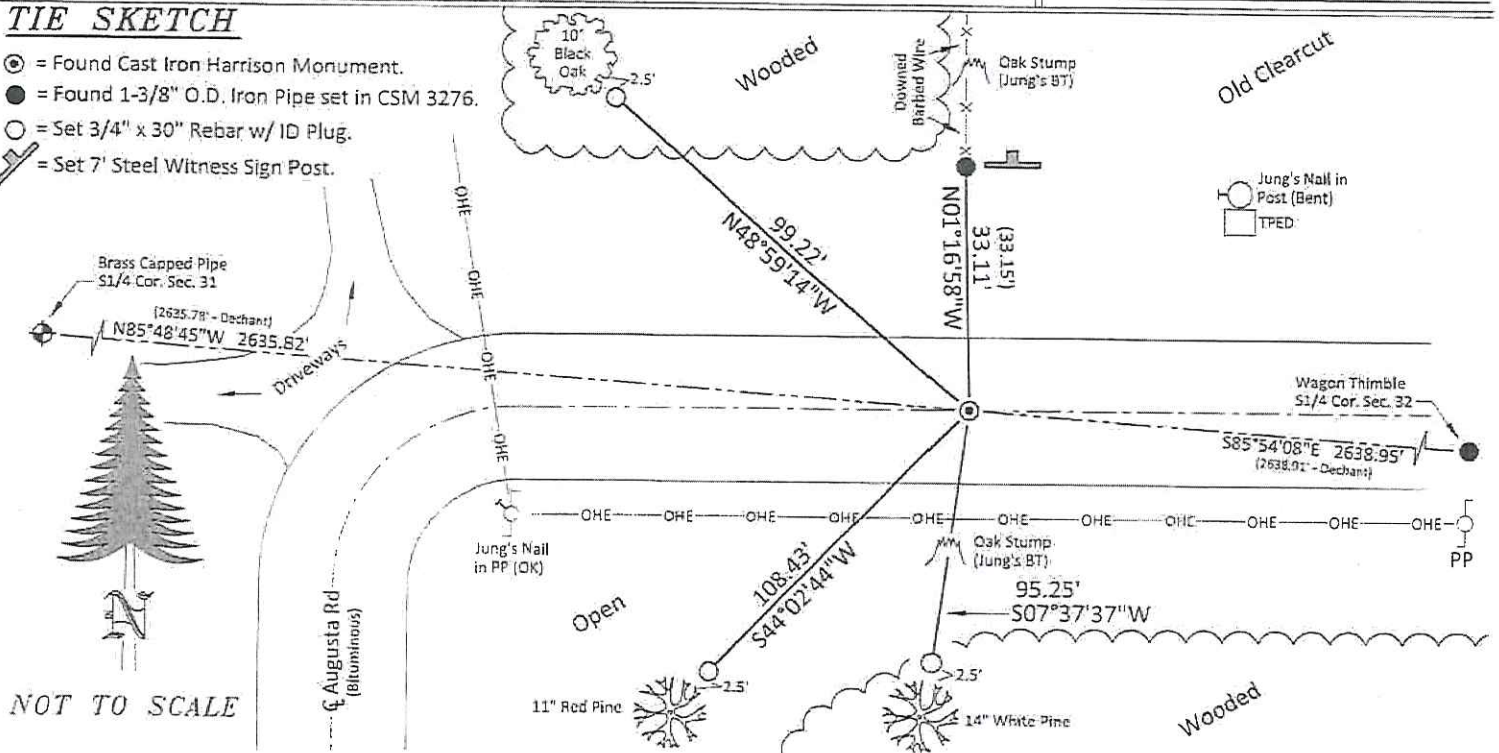
CERTIFIED CORRECT AND COMPLETE
 TO THE BEST OF MY KNOWLEDGE
 AND BELIEF:

Ethan Remus

Professional Land Surveyor
 DATE: March 15, 2016

TIE SKETCH

- ⊙ = Found Cast Iron Harrison Monument.
- = Found 1-3/8" O.D. Iron Pipe set in CSM 3278.
- = Set 3/4" x 30" Rebar w/ ID Plug.
- ⚡ = Set 7" Steel Witness Sign Post.



NOT TO SCALE

42001310000

I, William C. Jung, do hereby certify that on the 27th day of December 1982, I found (evidence) ~~no evidence~~ of the Northwest corner of Section 5, T 19 N, R 1 E Fourth Principal Meridian, and I re-established said corner according to the Wisconsin Statutes as shown and described hereon.

Dated this 19th day of Jan. 1983.

William C. Jung
Deputy County Surveyor
Title

History of corner establishment since Original Government Survey
Keach (from Jackson County) reset this corner in July of 1899.
In April of 1937 Kennedy's notes show that he found an iron monument at this corner.

Description of corner evidence found:

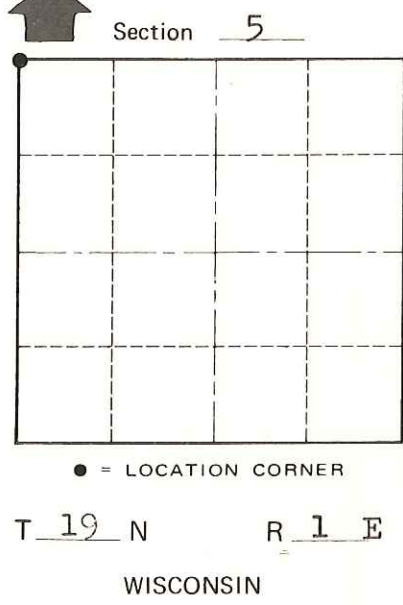
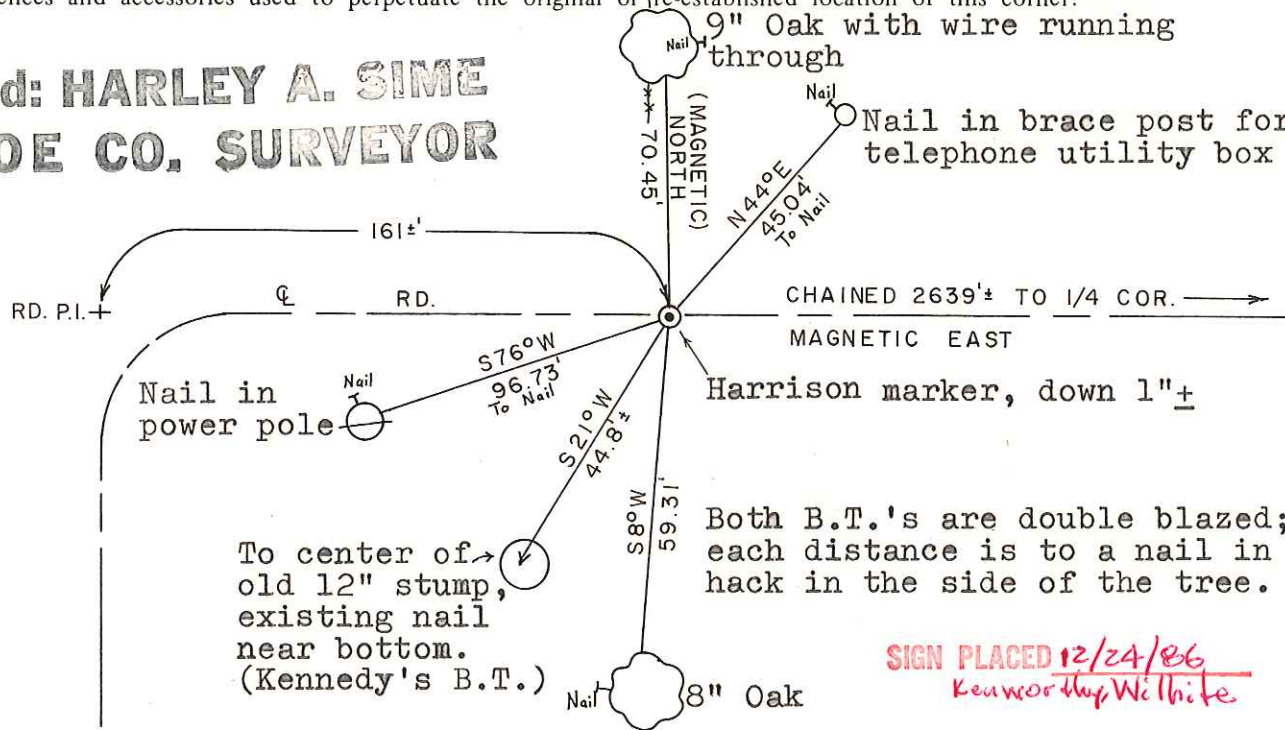
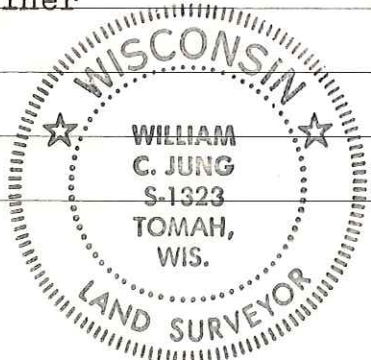
Found a 3/4" square drive pin with a round top, 22 1/2" long. Also found a wagon thimble. This thimble was just like the one that I found at the N1/4 of Section 5. These iron monuments are probably what Griffin pointed out to Kennedy. I think that the thimble may have been set by Keach. This corner is on line with an old fence to the North. It also is 161' East of the road to the South which agrees with Kennedy's notes. I also found one of Kennedy's bearing trees ^{used} before he found Griffin's iron. I removed the irons and replaced them ^{used} with a Harrison marker.

Description of corner and witness monuments, references and accessories used to perpetuate the original or re-established location of this corner:

Approved: **HARLEY A. SIME**
MONROE CO. SURVEYOR

Witnesses to corner location:

William C. Jung
Melvin Pliner



COUNTY SURVEYOR FORM NO. 1

SURVEY CONTROL ORDER

Horizontal	_____
Vertical	_____

WISCONSIN COORDINATE SYSTEM

Corner	East (X)	North (Y)	Elevation (Z)	Zone
Control Sta. Name				

City/Village of of Scott
 County of Monroe