

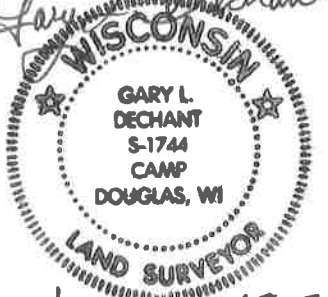
# 15

**U.S. PUBLIC LAND CORNER  
MAINTENANCE**

**Corner ID : E1/4 Sec. 6, T19N-R1E  
41901062000**

<u>DATE</u>	<u>CREW</u>	<u>MONUMENT TYPE</u> -----
February 15, 2018	Zachariah P.Dechant Gary Dechant	Existing Harrision Monument intact, flush, set new sign 1' north. 101' (recorded as 140' ?) east of center line of Augusta Road

<u>References:</u>	<u>Bearing</u>	<u>Distance</u>
1) Set 1"x24" iron pipe, down 4", 5' SE of 26" Double White Oak (BT)	N70E	10.56'
2) Set 1"x24" iron pipe, down 4", 3' west of 12" Red Pine	S82E	24.61'
3) Set 1"x24" iron pipe, down 4", 3' north of 12" Red Pine	S9W	17.50'
4) Set 1"x24" iron pipe, down 4", 4' SE of 18" Red Pine	N48W	27.92'

*Gary L. Dechant*  
  
*February 15, 2018*

41901062000

I, Garold A. Sime, do hereby certify that on the 18<sup>th</sup> day of December 1986, I found ~~(evidence)~~ (no evidence) of the E<sup>1</sup>/<sub>4</sub> corner of Section 6, T 19 N, R 1 E Fourth Principal Meridian, and I re-established said corner according to the Wisconsin Statutes as shown and described hereon.

Dated this 29<sup>th</sup> day of Dec. 1986.

Garold A. Sime

Deputy County Surveyor

Title

History of corner establishment since Original Government Survey

Kennedy was near this corner in 1937, he makes no mention of actual location of the corner.

Description of corner evidence found:

I set this corner on line with the east line of the Frac. NE<sup>1</sup>/<sub>4</sub>-NE<sup>1</sup>/<sub>4</sub> projected south and a distance midway between the southeast corner of said Frac. NE<sup>1</sup>/<sub>4</sub>-NE<sup>1</sup>/<sub>4</sub> and the southeast corner of the NE<sup>1</sup>/<sub>4</sub>-SE<sup>1</sup>/<sub>4</sub> of Sec. 6.

**See Reverse Side For Maintenance**

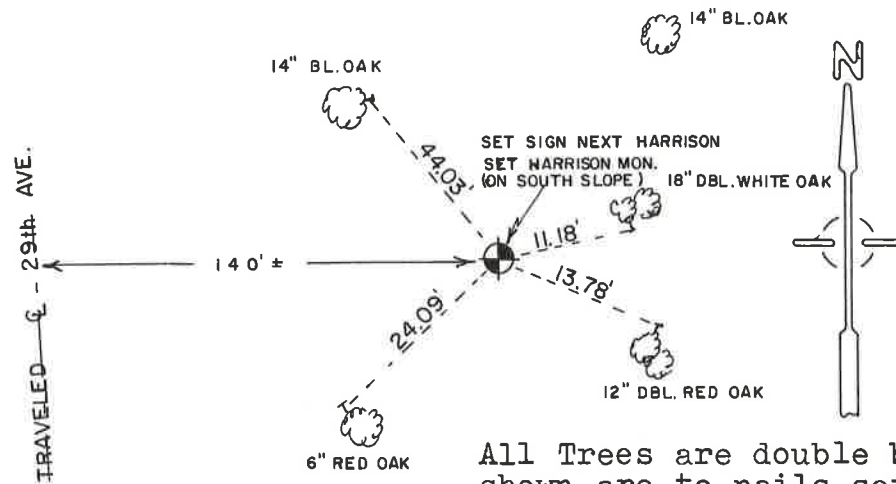
Description of corner and witness monuments, references and accessories used to perpetuate the original or re-established location of this corner:

Set Harrison Monument at corner

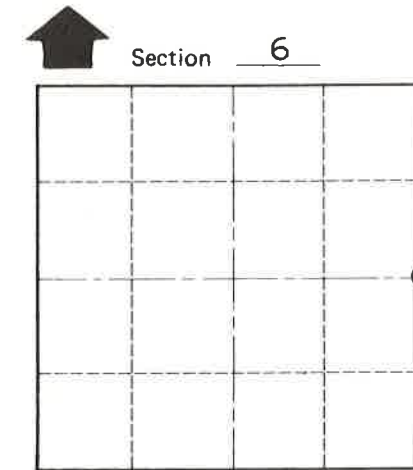
Witnesses to corner location:

Garold A. Sime, R.L.S.

Eric Jensen



All Trees are double blazed and distances shown are to nails set in hack in side of tree



O = LOCATION CORNER

T 19 N R 1E

WISCONSIN

SURVEY CONTROL ORDER

Horizontal	_____
Vertical	_____

WISCONSIN COORDINATE SYSTEM

Corner	East (X)	North (Y)	Elevation (Z)	Zone
Control Sta. Name				

City, Village or Town Scott  
 County of Monroe

COUNTY SURVEYOR FORM NO. 1