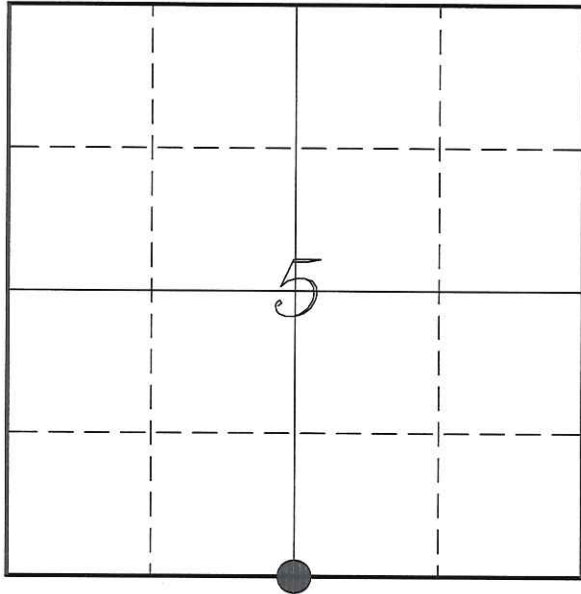


**U. S. PUBLIC LAND SURVEY MONUMENT RECORD**

**SECTION 5, T19N, R1E, TOWN OF SCOTT  
MONROE COUNTY, WISCONSIN**



**LOCATION OF LANDMARK**

<i>MONROE COUNTY COORDINATE SYSTEM</i>	
<i>Northing</i>	<i>453024.231</i>
<i>Easting</i>	<i>733673.622</i>
<i>Datum</i>	<i>NAD 1983 (1991)</i>
<i>Elevation</i>	
<i>Datum</i>	
<i>TYPE OF LANDMARK:</i>	
<i>Set Harrison Monument</i>	
<i>BEARINGS ARE REFERENCED TO:</i>	
<i>Monroe County Coordinates</i>	

*Witnesses:* Laurence E Johns III

*Date:* 1 January 2014

*Describe any record evidence, monument evidence, testimonial evidence or any other material evidence you considered and whether the monument was found or restored through acceptance of an obliterated evidence location.*

No bearing trees of record were located.

I found the 1 1/4" iron rod set by Rhinehart and used by Wilhite. Measurements to the West and East show that it was intended to be set at a straight line and mid-point.

There is no occupation anywhere in the area to determine anything different.

I accepted the 1 1/4" iron rod and replaced it with a Harrison Monument.

*Describe or show any material discrepancy between the location of the restored corner and that of the corner previously restored or re-established.*

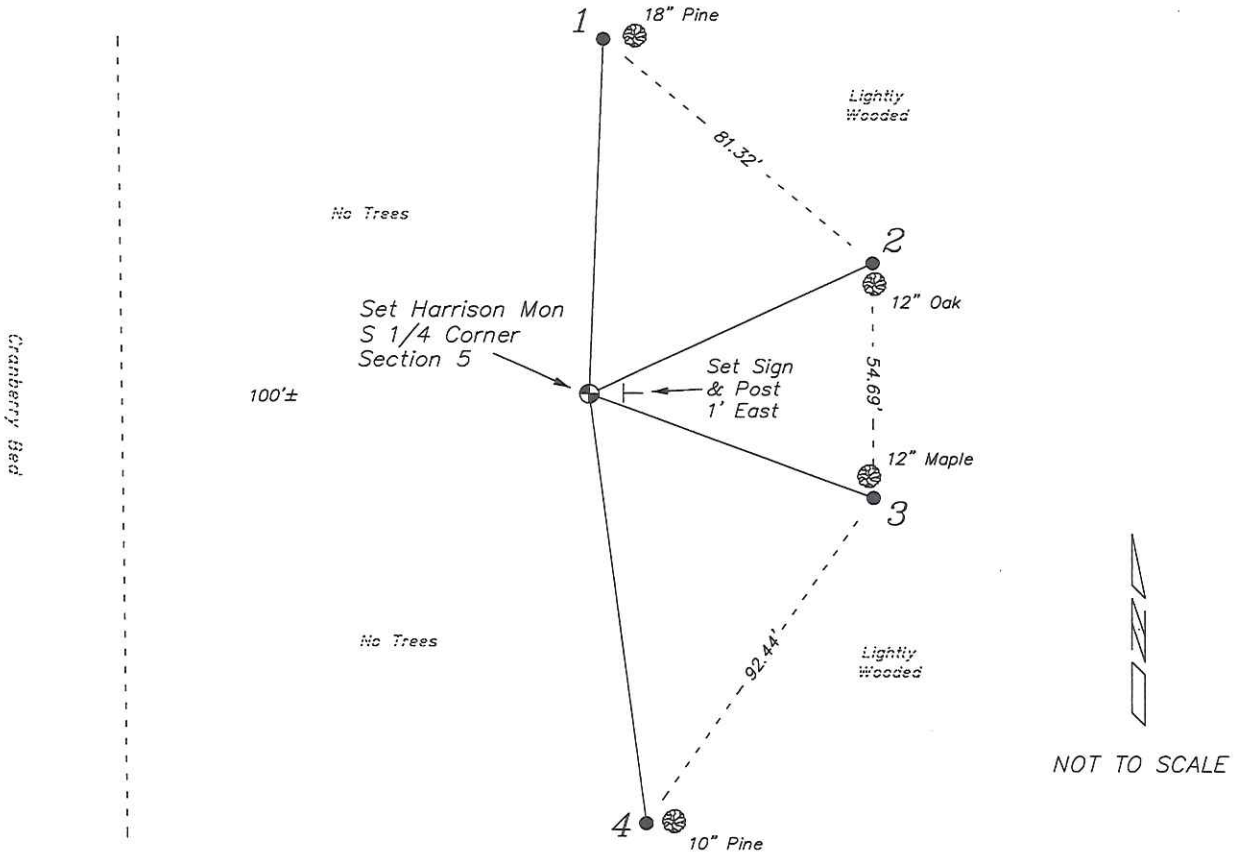
George Cole established this corner in November 1851.

Gregory Rhinehart was at this corner, in April 2004, during a survey in Sections 5 & 8. He shows that he set a 1 1/4" iron rod at this corner.

Dallas Wilhite was at this corner, in September 2011, during a survey in Sections 5, 6, 7 & 8. He shows that he found a 1 1/4" iron rod at this corner.

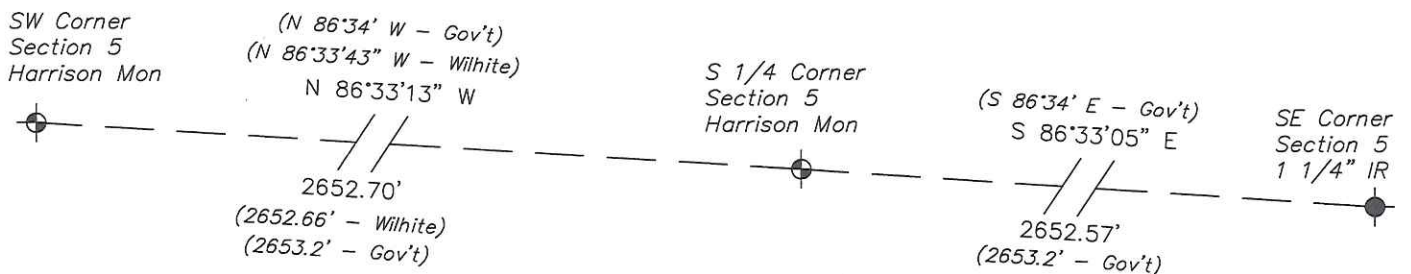
# RECORD OF DURABLE WITNESS MONUMENTS

NO	DESCRIPTION	BEARING	DISTANCE
1	Set 3/4" x 18" Iron Rod 1' West of a 18" Pine	N 02°10'35" E	82.55'
2	Set 3/4" x 18" Iron Rod 1' North of a 12" Oak	N 65°05'25" E	72.40'
3	Set 3/4" x 18" Iron Rod 1' South of a 12" Maple	S 69°51'42" E	70.27'
4	Set 3/4" x 18" Iron Rod 1' West of a 10" Pine	S 07°34'10" E	101.05'



## PLAN VIEW DRAWING OF REFERENCE TIES

*Map Showing Distance And Direction To Other Public Land Survey Corners Used For Re-Establishing The Corner*



I, Laurence E Johns III RLS 2804, Registered Land Surveyor, hereby certify that the corner location shown on this record was determined by me or under my direction and control, and that this U.S. Public Land Survey Monument Record is correct and complete to the best of my knowledge and belief.

*Laurence E. Johns III*  
 Laurence E Johns III RLS 2804  
 Eagle Ridge Surveying, LLC  
 PO Box 213  
 Wilton, Wisconsin  
 5 January 2014

