

CERTIFICATE

CERTIFIED LAND CORNER

No. 17

41901042000

I, Gary L. Dechant, do hereby certify that on the 8th day of March 2000, I found (evidence) (no evidence) of the W/4 corner of Section 3, T 19 N, R 1 E Fourth Principal Meridian, and I re-established said corner according to the Wisconsin Statutes as shown and described hereon.

Dated this 6th day of April 2000

Gary L. Dechant

Reg. Land Surveyor 1744

History of corner establishment since Original Government Survey

Kennedy may have been in this area in the 1930's.

I set a 1 1/2" x 2 1/2" x 6' rail by single proportionate measure between the SW of Section 3 and Kennedy's capped iron pipe at the NW corner of Section 3, in February of 1998.

Description of corner evidence found:

It was brought to my attention that Kennedy's capped iron pipe at the NW corner of Section 3 was moved, unknown to me at the time I set the rail at the W/4 corner of Section 3. We set a 1 1/2" x 6' iron pipe at the W/4 corner of Section 3 prorated between the SW corner of Section 3 and the newly established NW corner of Section 3.

There is still some "loud" discussion taking place about Kennedy's iron pipe ever being moved, therefore left the rail in at least as a reference. However, most evidence would suggest that Kennedy's capped iron pipe was moved.

Description of corner and witness monuments, references and accessories used to perpetuate the original or re-established location of this corner

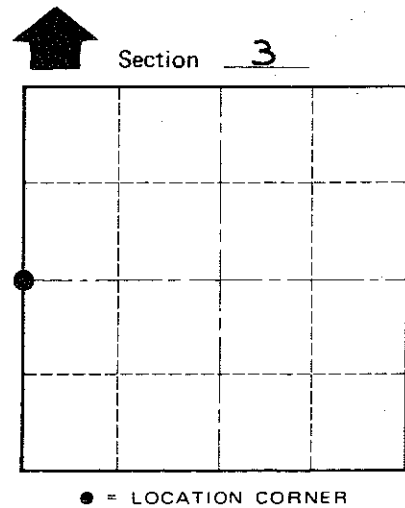
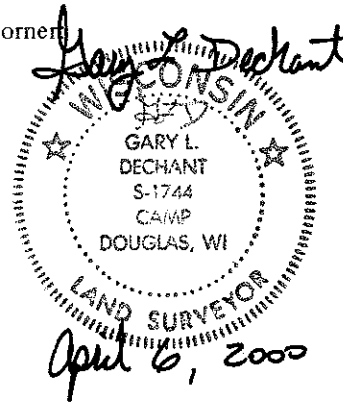
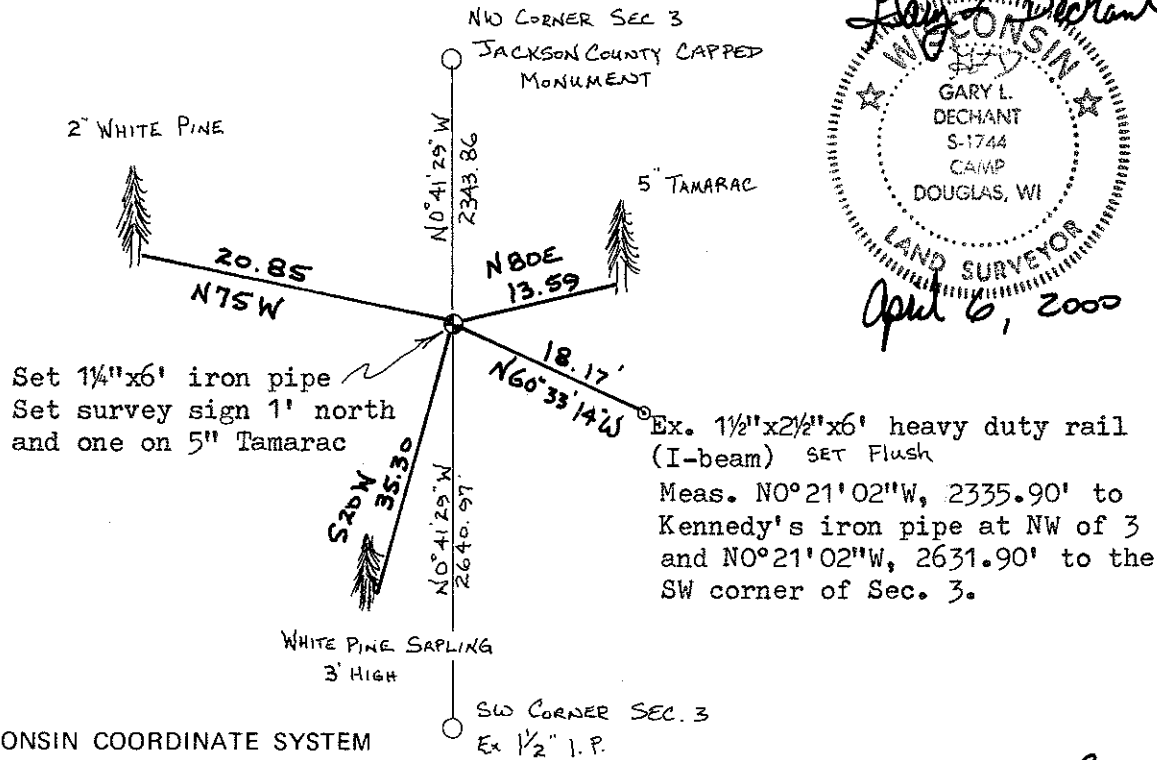
Witnesses to corner location:

DAVID E. MADISON

ZACHARIAH P. DECHANT

GARY L. DECHANT

COUNTY SURVEYOR FORM NO. 1



T 19 N R 1 E WISCONSIN

SURVEY CONTROL ORDER

Horizontal	_____
Vertical	_____

WISCONSIN COORDINATE SYSTEM

Corner	East (X)	North (Y)	Elevation (Z)	Zone
Control Sta. Name				

City, Village or Town SCOTT

County of MONROE