

# 26

**U.S. PUBLIC LAND CORNER  
MAINTENANCE**

**Corner ID : N1/4 Sec.10, T19N-R1E  
41901030020**

<u>DATE</u>	<u>CREW</u>	<u>MONUMENT TYPE</u> -----
March 25, 2019	AL Hoff Gary L. Dechant	Found 1.25" hexagon iron bar with worm gear. Sign 1.5. SE.

References:

	<u>Bearing</u>	<u>Distance</u>
1) Set 40d nail on west side of 18" White Pine	N10W	38.05'
2) Set 40d nail on SW side of 20" (at base) double White Pine	S30°23'04"E	59.73'
3) Set 40d nail on NW side of 4" Whit Pine	S38°27'41"W	40.40'
4) Set 40d nail on NE side of 18" White Pine (1998 BT)	N48W	38.52'

Coordinates: 452397.7672  
744230.9266 1991/2011



41901030020

I, Gary L. Dechant, do hereby certify that on the 5th day of February 1998, I found (evidence) (~~no evidence~~) of the N/4 corner of Section 10, T 19 N, R 1 E Fourth Principal Meridian, and I re-established said corner according to the Wisconsin Statutes as shown and described hereon.

Dated this 17th day of Feb. 1998.

Gary L. Dechant

Registered Land Surveyor-1744  
Title

History of corner establishment since Original Government Survey

Fred Holden was here in 1903 and set a 1/2" iron. Kennedy was here in 1937, but makes no mention of finding Holden's corner or of setting his own.

Description of corner evidence found:

Found Holden's 1/2" rod bent over, bottom portion in good shape, probably hit by logging equipment as this area was recently timbered. Replaced Holden's rod with a 1 1/4"x6' hexagon iron bar with worm gear and hole on top 8".

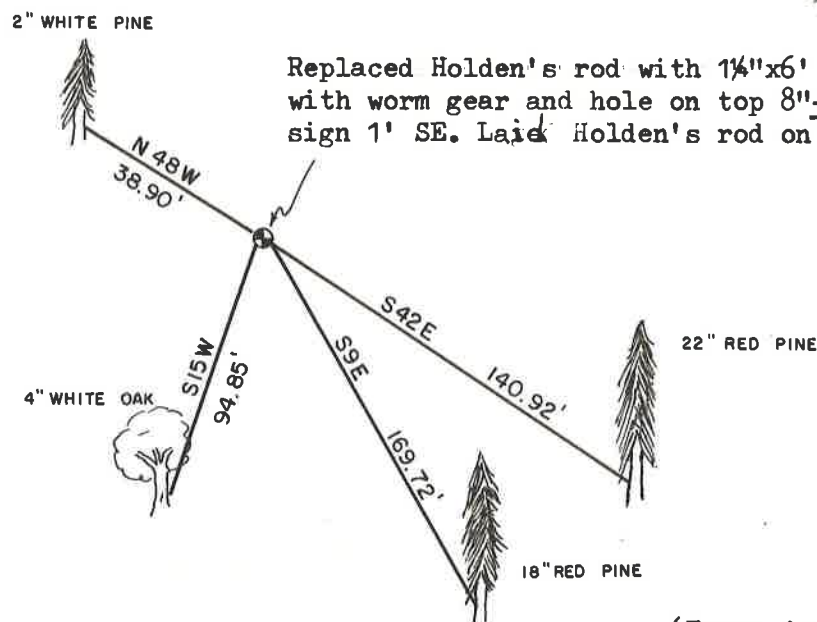


Description of corner and witness monuments, references and accessories used to perpetuate the original or re-established location of this corner:

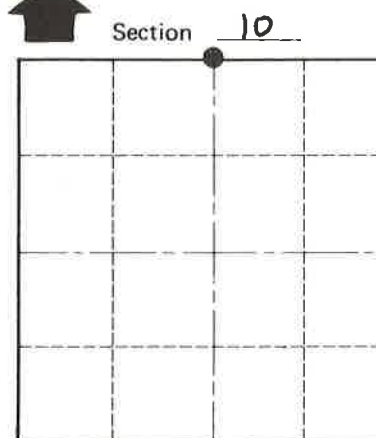
Witnesses to corner location:

David E. Madison

Gary L. Dechant



See Reverse Side For Maintenance



T 19 N R 1 E  
WISCONSIN

SURVEY CONTROL ORDER

Horizontal	_____
Vertical	_____

WISCONSIN COORDINATE SYSTEM

Corner	East (X)	North (Y)	Elevation (Z)	Zone
Control Sta. Name				

(Trees double blazed with 40d nail set)

City, Village or Town SCOTT  
County of MONROE

COUNTY SURVEYOR FORM NO. 1