

38

**U.S. PUBLIC LAND CORNER
MAINTENANCE**

Corner ID : E1/4 Sec.10, T19N-R1E

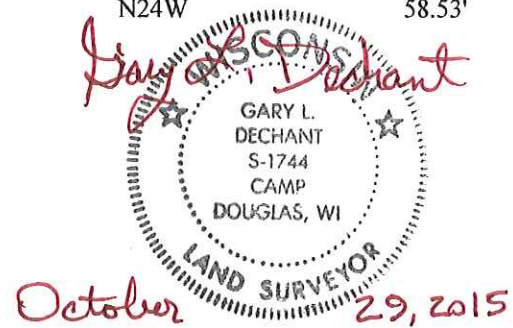
41901102000

<u>DATE</u>	<u>CREW</u>	<u>MONUMENT TYPE -----</u>
March 25, 2015	Zachariah P. Dechant Gary L. Dechant	Existing railroad spike center line CTH "EW" EXISTING MONUMENT 12" BELOW RRS.

References:

	<u>Bearing</u>	<u>Distance</u>
1) Set 3/4"x24" round iron bar, down 6"	N37E	64.17'
2) Set 3/4"x24" round iron bar, down 6", 1' north & 1' east of two 8" Jack Pines	S24E	47.79'
3) Set 3/4"x24" round iron bar, down 6", 4' NW of 3" White Pine 3' west of short shallow ditch	S37W	57.25'
4) Set 3/4"x24" iron bar, down 6", 2' north of State Wildlife sign	N24W	58.53'

Railroad Spike & reference markers set on straight lines.



41901102000

I, William C. Jung, do hereby certify that on the 6th day of June 1984, I found ~~evidence~~ (evidence) of the West 1/4 corner of Section 11, T 19 N, R 1 E, Fourth Principal Meridian, and I re-established said corner according to the Wisconsin Statutes as shown and described hereon.

Dated this 6th day of June 1984.

William C. Jung

Deputy County Surveyor, R.L.S. 1323
Title

History of corner establishment since Original Government Survey

Fred Holden set an iron pump handle at this corner in September of 1903. The 1896 Town Road Book shows that this corner was supposed to have been in the road. Kennedy's notes in the 1930's also show that this corner was in the road.

Description of corner evidence found:

While traversing in the Town of Scott in July of 1980, I set an iron bar at this corner in the center of the road. I could not find Holden's corner. This corner was set at a distance from the East 1/4 corner equivalent to the original notes. I could find no other evidence along the E-W 1/4 line.

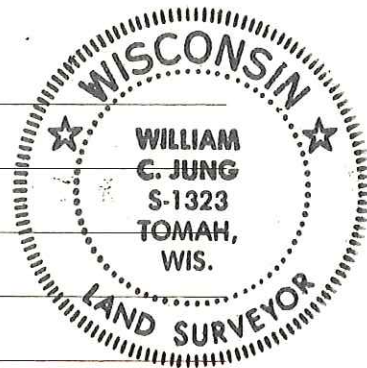
From my field search and traversing, I do not think that this corner should move further West. (4/13/85)

See Reverse Side For Maintenance

Description of corner and witness monuments, references and accessories used to perpetuate the original or re-established location of this corner:

Witnesses to corner location:

William C. Jung



Approved: Harley Sime
Monroe County Surveyor

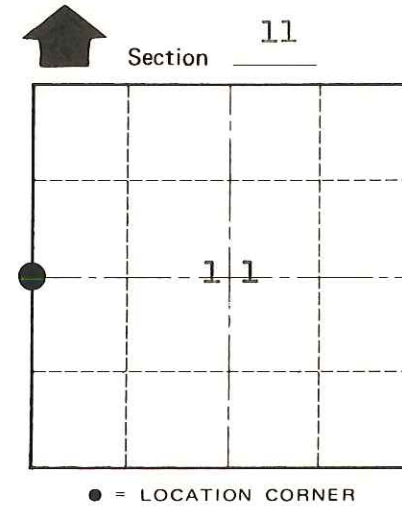
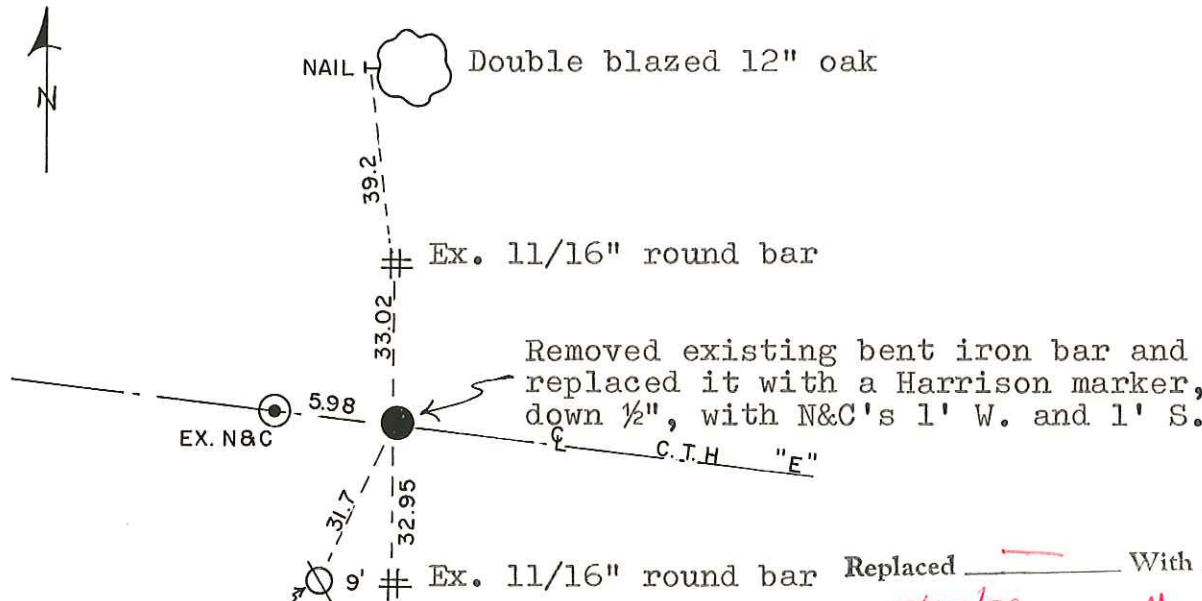
SURVEY CONTROL ORDER

Horizontal	_____
Vertical	_____

To center of telephone pedestal post

WISCONSIN COORDINATE SYSTEM

Corner	East (X)	North (Y)	Elevation (Z)	Zone
Control Sta. Name				



Replaced _____ With _____ WISCONSIN

On 3/25/86. Crew: Meyer, Wilhite

Comments Set railroad spike over top of Harrison, using ties shown, after C.T.H. E resurfacing project. B.M.

City, Village or Town Scott
County of Monroe
Wisconsin

COUNTY SURVEYOR FORM NO. 1