

45

**U.S. PUBLIC LAND CORNER
MAINTENANCE**

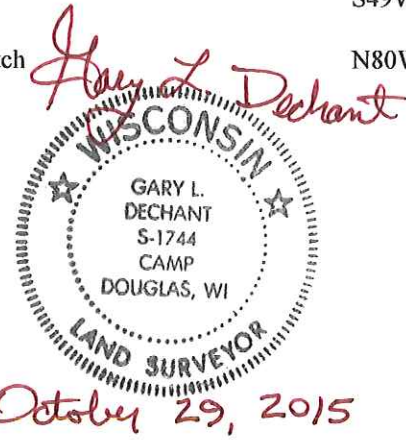
Corner ID : SE Sec.10, T19N-R1E

41901100000

<u>DATE</u>	<u>CREW</u>	<u>MONUMENT TYPE -----</u>
December 6, 2014	Zachariah P. Dechant Gary L. Dechant	Found Harrison destroyed. Reset from Railroad spikes in bearing trees. All bearing trees are now stumps. Reset corner with 3/4"x6' iron bar inside of 1 1/4"x3' iron pipe. Set sign 1' north. Now a swampy area.

References:

	<u>Bearing</u>	<u>Distance</u>
1) Set 3/4"x24" round iron bar, 6' SW of two 14" White Pines	N13E	112.32'
2) Set 3/4"x24" round iron bar, 2' south of 8" White Pine	S73E	58.33'
3) Set 3/4"x24" round iron bar, NE of ditch	S49W	71.70'
4) Set 3/4"x24" round iron bar, at NE end of ditch	N80W	123.07'



4190110000
**See Reverse Side
For Maintenance**

I, GARY L. DECHANT, do hereby certify that on the 16 day of FEBRUARY 1985, I found ~~(evidence)~~ (no evidence) of the SE corner of SECTION 10, T 19 N, R 1E Fourth Principal Meridian, and I re-established said corner according to the Wisconsin Statutes as shown and described hereon.

Dated this 3 day of MARCH 1985.

Gary L. Dechant
REGISTERED LAND SURVEYOR, S-1744
Title

History of corner establishment since Original Government Survey

FRED HOLDEN WAS HERE IN SEPT. OF 1903.
KENNEDY MAY HAVE BEEN HERE AT A LATER DATE.

Description of corner evidence found:

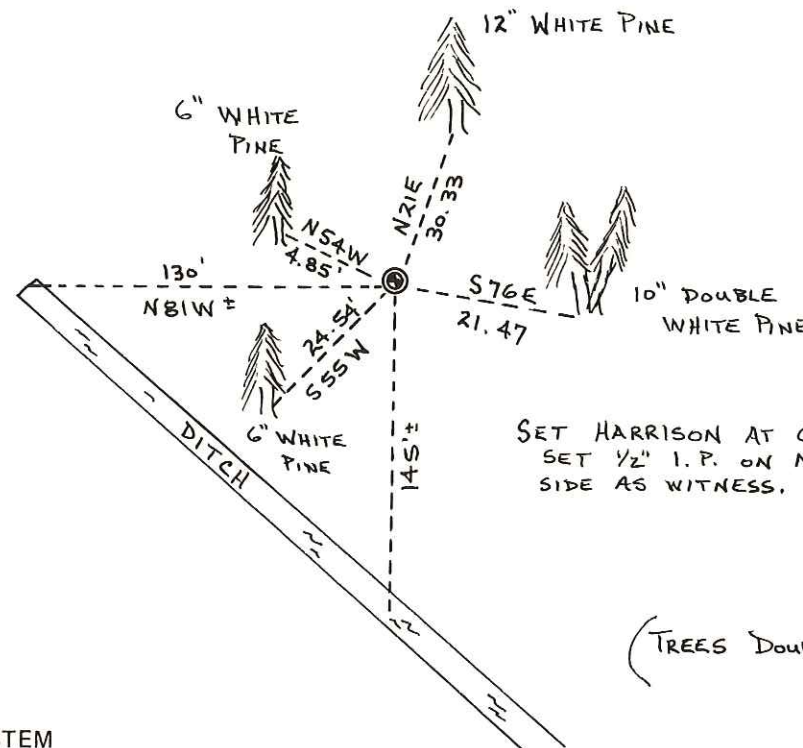
SET CORNER BY PROJECTING EASTWARD THE LINE BETWEEN THE SW & S 1/4 CORNERS OF SECTION 10 AND AT A DOUBLED DISTANCE. THIS FITS HOLDEN'S DISTANCES ALONG THE SOUTH LINE OF SEC. 10 EXTREMELY WELL. ALTHOUGH IS NOT ON A STRAIGHT LINE WITH NE & E 1/4 OF SECTION 10, DOES FIT DISTANCES TO SAID NE & E 1/4 CORNERS VERY WELL.

Description of corner and witness monuments, references and accessories used to perpetuate the original or re-established location of this corner:

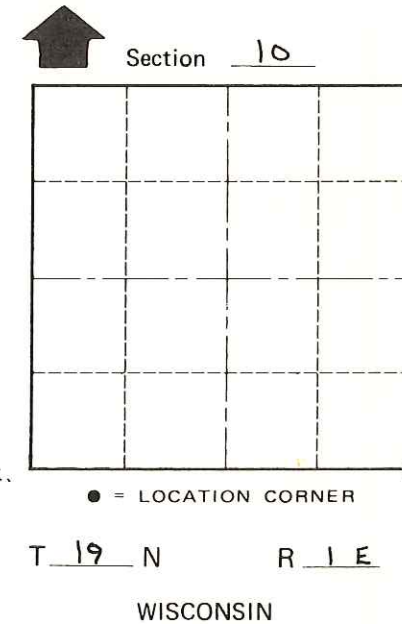
Witnesses to corner location:

DANNY L. DRAEGER D/D

GARY L. DECHANT D/A



SET HARRISON AT CORNER.
SET 1/2" I.P. ON NORTH SIDE AS WITNESS.



T 19 N R 1E
WISCONSIN

(TREES DOUBLE BLAZED WITH R.R. SPIKES) SET.

City, Village or Town SCOTT
County of MONROE

COUNTY SURVEYOR FORM NO. 1

SURVEY CONTROL ORDER

Horizontal _____
Vertical _____

WISCONSIN COORDINATE SYSTEM

Corner	East (X)	North (Y)	Elevation (Z)	Zone
Control Sta. Name				