

# 49

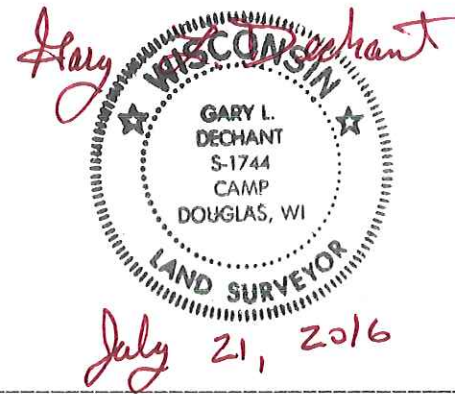
**U.S. PUBLIC LAND CORNER  
MAINTENANCE**

**Corner ID : SE Sec 8, T19N-R1E**

**41901080000**

<u>DATE</u>	<u>CREW</u>	<u>MONUMENT TYPE</u>
May 27, 2016	Zachariah P. Dechant Gary L. Dechant	Found 1¼" iron bar 15' north Copper Road CTH "EW" intersection. Drove it down 12" due to grinding pavement for new road surface

All ties from 2003 are in good condition.



CERTIFICATE

CERTIFIED LAND CORNER

No. 49  
Page 2  
41901080000

I, Gary L. Dechant, do hereby certify that on the 21st day of August 2003, I found (evidence) ~~(no evidence)~~ of the NE corner of Section 17, T 19 N, R 1 E Fourth Principal Meridian, and I re-established said corner according to the Wisconsin Statutes as shown and described hereon.

Dated this 27th day of August 2003.

Gary L. Dechant  
Registered Surveyor 1744  
Title

History of corner establishment since Original Government Survey

Kennedy shows a stone at this corner in his survey in the late 1930's.  
W. Jung Found a stone in 1980 and Kennedy's witness pipe to the NE and referenced stone. Apparently due to road construction, corner was reset with 1 1/4" iron bar by County Surveyor.

Description of corner evidence found:

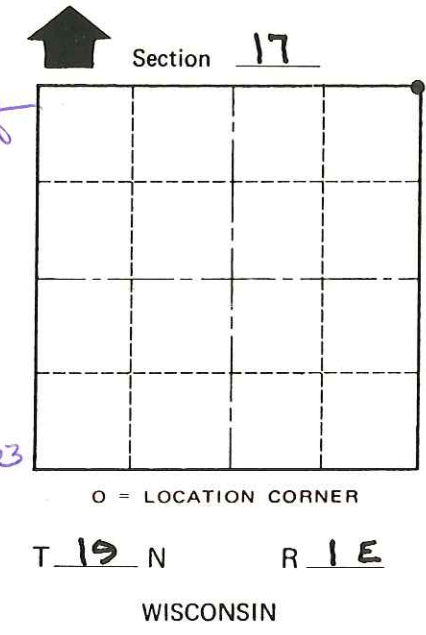
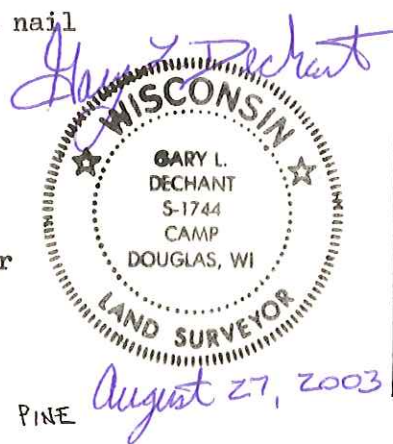
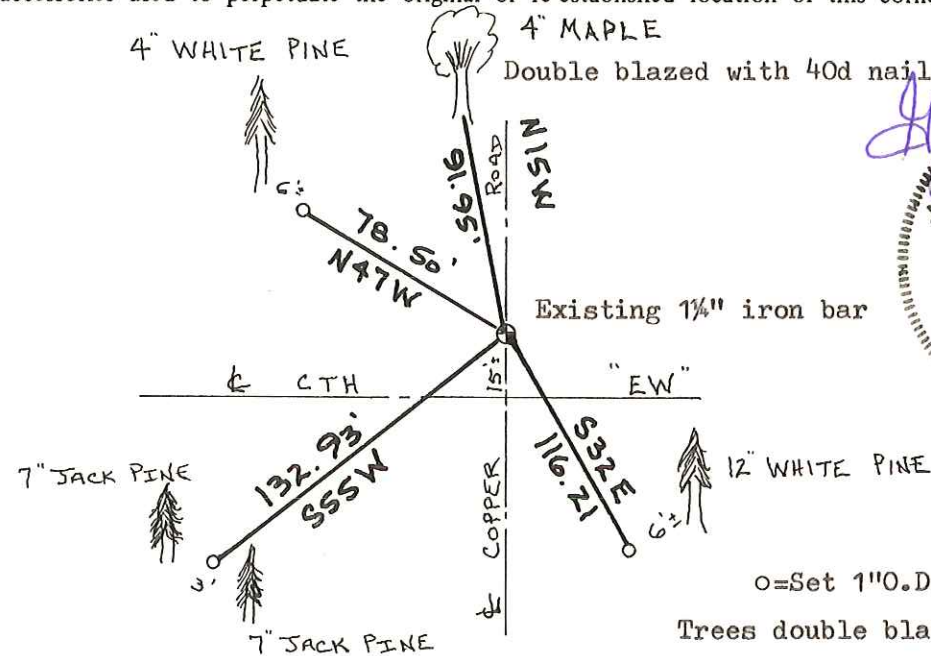
Found 1 1/4" Iron Bar, but only good reference remaining was power pole to southeast 99.88'.  
New references shown below.

**See Reverse Side  
For Maintenance**

Description of corner and witness monuments, references and accessories used to perpetuate the original or re-established location of this corner:

Witnesses to corner location:

Zachariah P. Dechant  
Gary L. Dechant



SURVEY CONTROL ORDER

Horizontal \_\_\_\_\_  
Vertical \_\_\_\_\_

WISCONSIN COORDINATE SYSTEM

Corner	East (X)	North (Y)	Elevation (Z)	Zone
Control Sta. Name				

City, Village or Town SCOTT  
County of MONROE

COUNTY SURVEYOR FORM NO. 1

41901080000



I, William C. Jung, do hereby certify that on the twentyfourth day of June 1980 I found (evidence) ~~no evidence~~ of the Northeast corner of Section 17, T. 19 N, R. 1 E Fourth Principal Meridian, and I re-established said corner according to the Wisconsin Statutes as shown and described hereon.

Dated this 25th day of Feb. 1981.

*William C. Jung*

William C. Jung - R. L. S. 1323  
Title

History of corner establishment since Original Government Survey

Kennedy shows a stone at this corner in his survey notes of the late 1930's.

Description of corner evidence found:

Found stone down 13". Set 3/4" iron bar on North side of stone. The stone is triangular shaped.

Description of corner and witness monuments, references and accessories used to perpetuate the original or re-established location of this corner:

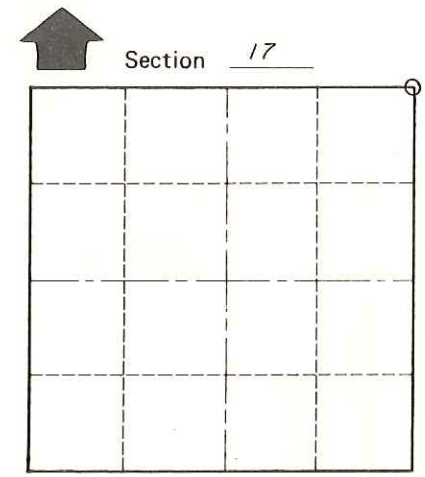
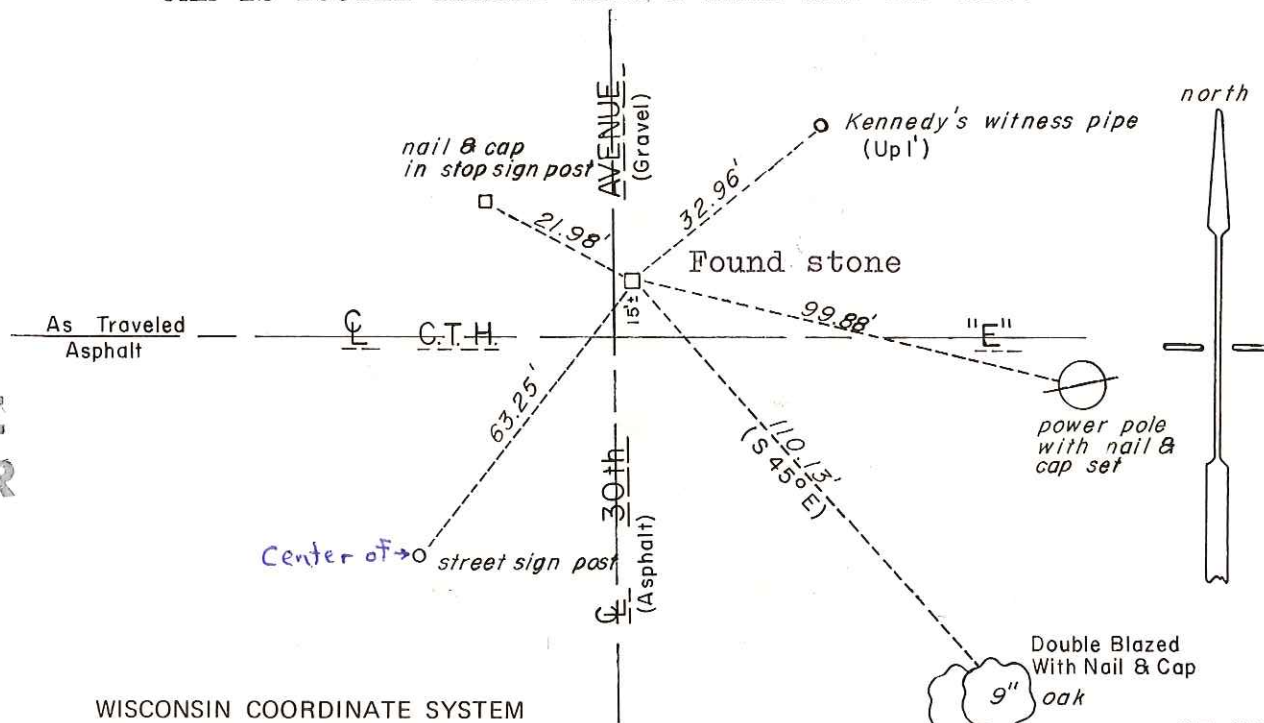
OAK IS DOUBLE BLAZED WITH A NAIL AND CAP SET.

Witnesses to corner location:

William C. Jung

Carlton R. Pietz

Charles Dade



O = LOCATION CORNER  
T 19 N R 1 E  
WISCONSIN

Approved: HARLEY A. SIMÉ  
MONROE CO. SURVEYOR

SURVEY CONTROL ORDER

Horizontal	_____
Vertical	_____

WISCONSIN COORDINATE SYSTEM

Corner	East (X)	North (Y)	Elevation (Z)	Zone
Control Sta. Name				

City, Village or Town OF SCOTT  
County of MONROE WISCONSIN

COUNTY SURVEYOR FORM NO. 1