

89

**U.S. PUBLIC LAND CORNER
MAINTENANCE**

Corner ID : SE Sec.20, T19N-R1E

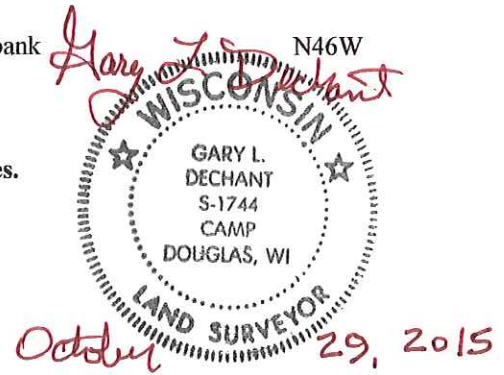
41901200000

<u>DATE</u>	<u>CREW</u>	<u>MONUMENT TYPE</u> -----
March 19, 2015	Zachariah P. Dechant Gary L. Dechant	Existing Harrison intact, down 4" at intersection of Buckley Ave & Copper Road.

References:

	<u>Bearing</u>	<u>Distance</u>
1) Set 3/4"x24" round iron bar, NE of Wildlife signs	N53E	51.68'
2) Set 3/4"x24" round iron bar, between two 20" White Pines	S46E	69.22'
3) Set 3/4"x24" round iron bar, 9' NE of 6" White Pine	S53W	122.45'
4) Set 3/4"x24" iron bar, down 6", 12' west of ditch bank	N46W	95.09'

Harrison & reference markers set on straight lines.



I, Bryan H. Meyer, do hereby certify that on the 3rd day of October 1986, I found ~~evidence~~ (no evidence) of the Southeast corner of Section 20, T19 N, R 1 E Fourth Principal Meridian, and I re-established said corner according to the Wisconsin Statutes as shown and described hereon.

Dated this 12th day of Dec. 1986.

Bryan H. Meyer
Deputy County Surveyor
Title

History of corner establishment since Original Government Survey

Fred A. Holden was here in June of 1902 and set a stone. Kennedy was here in May of 1938 and could not find Holden's stone, but did make a mark on the bridge. William Jung was here in June of 1980 and could not find evidence of Holden's corner or Kennedy's corner. Jung set a Harrison monument at a location by prorating his measurement along the South line of Section 20 to Holden's measurement.

Corner Evidence Found:

I found the stone of record at the East 1/4 corner of Section 20. I established this corner by intersecting the lines that run along the East line of the NE 1/4 of Section 20 and the South line of the SW 1/4 of Section 20. I discussed this corner location with Mr. Jung and he agreed that the corner should be moved to my location.

See Reverse Side For Maintenance



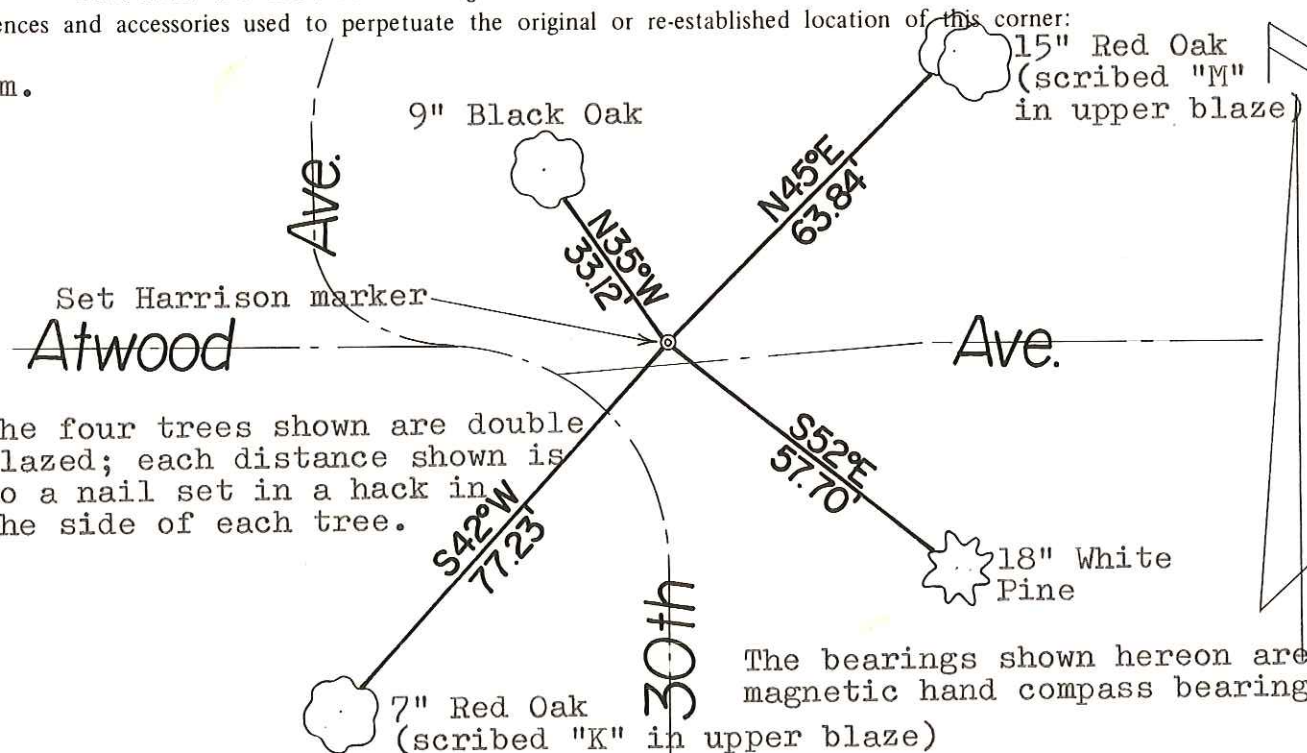
COUNTY SURVEYOR FORM NO. 1

Description of corner and witness monuments, references and accessories used to perpetuate the original or re-established location of this corner:

Crew: Meyer, Kenworthy
Date: October 3, 1986 - 3:30 p.m.
Weather: Overcast
Witnesses to corner location:

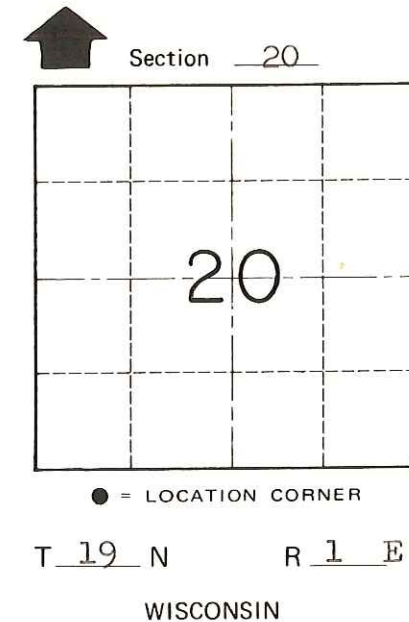
Bryan H. Meyer

John Kenworthy



The four trees shown are double blazed; each distance shown is to a nail set in a hack in the side of each tree.

The bearings shown hereon are magnetic hand compass bearings.



SURVEY CONTROL ORDER

Horizontal	_____
Vertical	_____

WISCONSIN COORDINATE SYSTEM				
Corner	East (X)	North (Y)	Elevation (Z)	Zone
Control Sta. Name				

City, Village or Town of Scott
County of Monroe